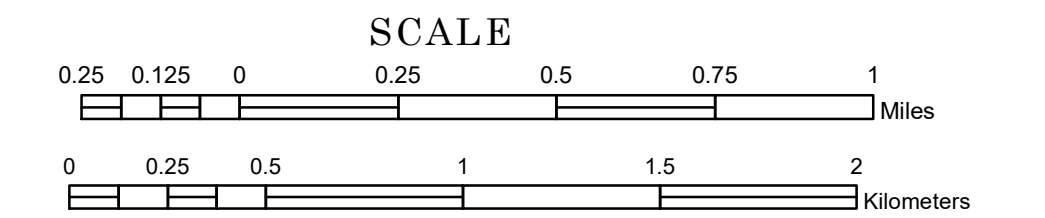


# TOWNSHIP OF MAPLEWOOD

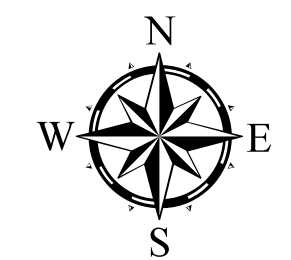
PREPARED BY THE  
MINNESOTA DEPARTMENT OF TRANSPORTATION  
OFFICE OF TRANSPORTATION SYSTEM MANAGEMENT

IN COOPERATION WITH  
U.S. DEPARTMENT OF TRANSPORTATION  
FEDERAL HIGHWAY ADMINISTRATION



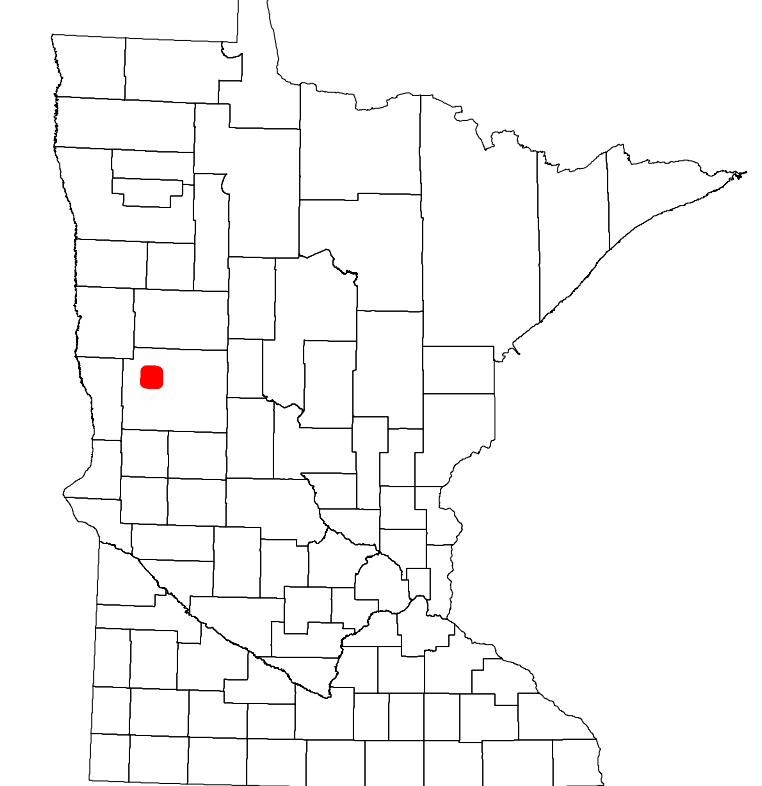
2023

Projection:  
Transverse Mercator  
NAD 1986  
UTM Zone 15

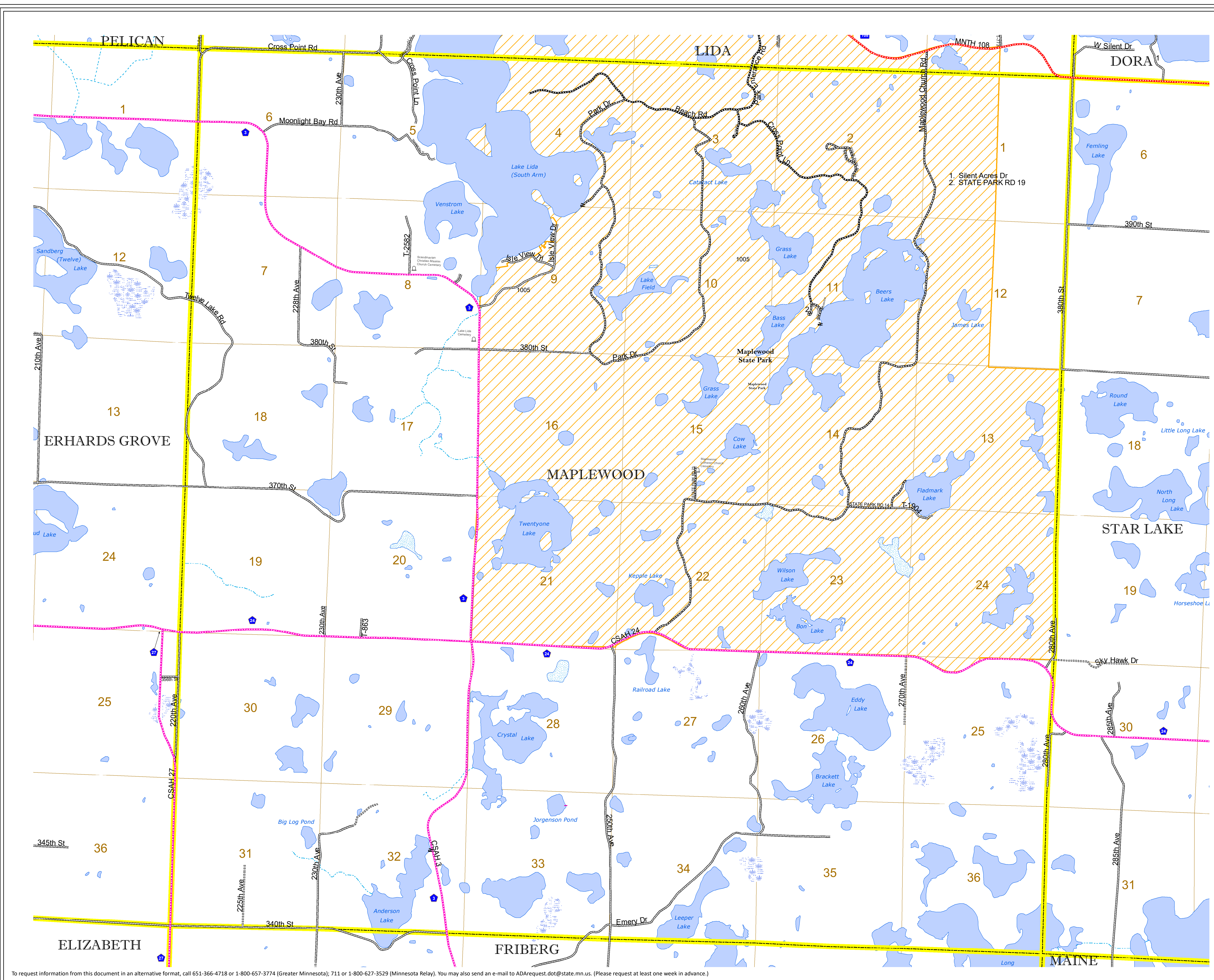


North American Datum  
of 1986

ROAD AND ROADWAY FEATURES	
INTERSTATE	CONCRETE
US HIGHWAY	BITUMINOUS
MN HIGHWAY	GRAVEL
COUNTY STATE AID HIGHWAY	DIRT/UNIMPROVED
COUNTY ROAD	OTHER
TOWNSHIP ROAD	UNKNOWN
UNORGANIZED TERRITORY ROAD	
OTHER ROADS	
Municipal	RAMP OR CONNECTOR
Private	INTERSTATE EXIT
National Monument	AVIATION FEATURES
National Park	GENERAL AIRPORT
National Wildlife Refuge	AIRSTRIP
State Park	SEAPLANE
Preserve	AIRPORT RUNWAY
RAILROAD AND RAILWAY FEATURES	
EMPIRE BUILDER STATION (AMTRAK)	COMMERCIAL AIRPORT
NORTHSTAR STATION (COMMUTER)	GENERAL AIRPORT
	AIRSTRIP
	SEAPLANE
	AIRPORT RUNWAY
INFRASTRUCTURE FEATURES	
LONG BRIDGE (200' OR GREATER SPAN)	TRIBAL LAND
MAJOR BRIDGE (20' TO 200' SPAN)	STATE OF MINNESOTA
MINOR BRIDGE (5' TO 20' SPAN)	COUNTY
	MUNICIPALITY
	UNORGANIZED TERRITORY
	FEDERAL ADJUSTED URBAN AREA (2014)
	CIVIL TOWNSHIP
	CONGRESSIONAL TOWNSHIP
	SECTION
	MILITARY
	VOYAGEURS NATIONAL PARK
	BOUNDARY WATERS CANOE AREA WILDERNESS
	STATE PARK
	REGIONAL PARK
	NATIONAL FOREST
	NATIONAL AND STATE FOREST
	STATE FOREST
	WILDLIFE REFUGUE AREA
	WILDLIFE MANAGEMENT AREA
HYDROLOGIC FEATURES	
RIVER OR STREAM (PERENNIAL)	LAKE, POND OR RESERVOIR
STREAM (INTERMITTENT)	DRAINAGE DITCH
	WETLAND
	ISLAND OR LAND
	REGIONAL WATERSHED



Population (U.S. Census 2010): 318



To request information from this document in an alternative format, call 651-366-4718 or 1-800-657-3774 (Greater Minnesota); 711 or 1-800-627-3529 (Minnesota Relay). You may also send an e-mail to ADRequest.dot@state.mn.us. (Please request at least one week in advance.)