

# TOWNSHIP OF BRAY

PREPARED BY THE  
MINNESOTA DEPARTMENT OF TRANSPORTATION  
OFFICE OF TRANSPORTATION SYSTEM MANAGEMENT

IN COOPERATION WITH  
U.S. DEPARTMENT OF TRANSPORTATION  
FEDERAL HIGHWAY ADMINISTRATION



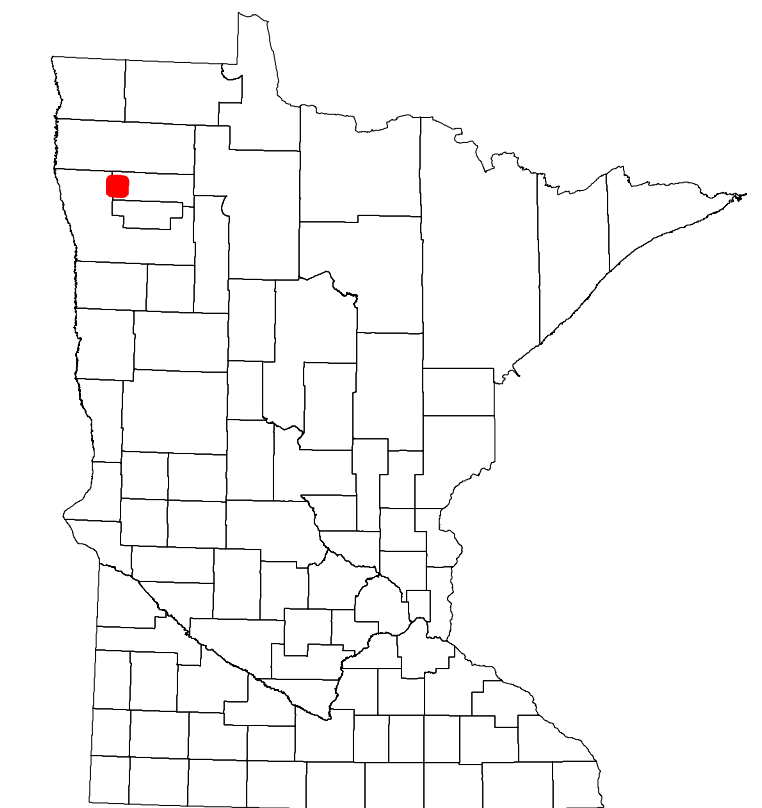
2023

Projection:  
Transverse Mercator  
NAD 1986  
UTM Zone 15

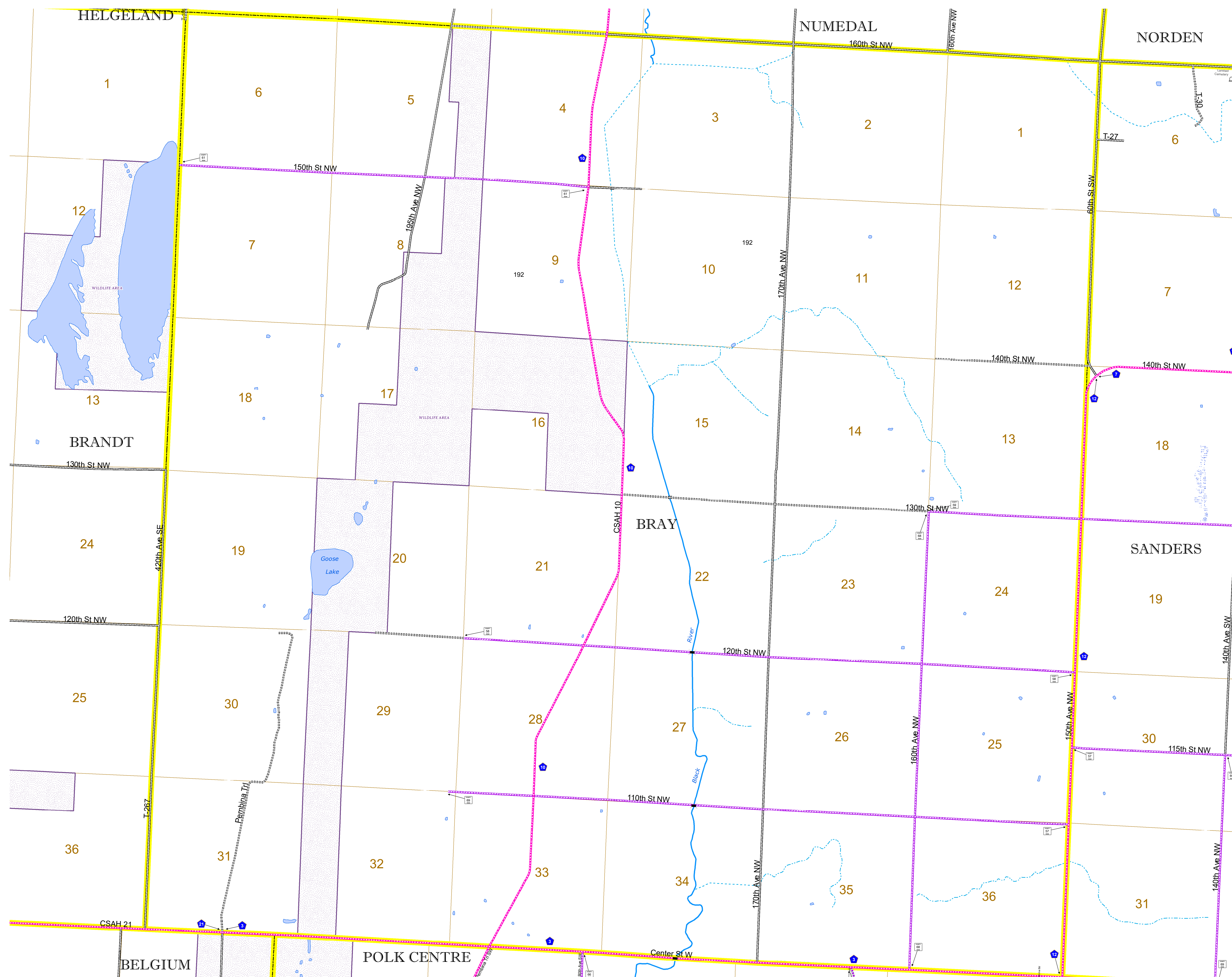


North American Datum  
of 1986

ROAD AND ROADWAY FEATURES		AVIATION FEATURES	
INTERSTATE	CONCRETE	COMMERCIAL AIRPORT	GENERAL AIRPORT
US HIGHWAY	BITUMINOUS	NORTHSTAR STATION (COMMUTER)	AIRSTRIP
MN HIGHWAY	GRAVEL	SEAPLANE	AIRPORT RUNWAY
COUNTY STATE AID HIGHWAY	DIRT/UNIMPROVED	COLLECTOR ROAD	BOUNDARY FEATURES
COUNTY ROAD	OTHER	STATE OF MINNESOTA	COUNTY
TOWNSHIP ROAD	UNKNOWN	MUNICIPALITY	MUNICIPALITY
UNORGANIZED TERRITORY ROAD		UNORGANIZED TERRITORY	UNORGANIZED TERRITORY
OTHER ROADS		FEDERAL ADJUSTED URBAN AREA (2014)	CIVIL TOWNSHIP
Municipal		CONGRESSIONAL TOWNSHIP	SECTION
Private		MILITARY	MILITARY
National Monument		VOYAGEURS NATIONAL PARK	VOYAGEURS NATIONAL PARK
National Park		BOUNDARY WATERS CANOE AREA WILDERNESS	BOUNDARY WATERS CANOE AREA WILDERNESS
National Wildlife Refuge		STATE PARK	STATE PARK
State Park		REGIONAL PARK	REGIONAL PARK
Preserve		NATIONAL FOREST	NATIONAL FOREST
		NATIONAL AND STATE FOREST	NATIONAL AND STATE FOREST
		STATE FOREST	STATE FOREST
		WILDLIFE REFUGUE AREA	WILDLIFE REFUGUE AREA
		WILDLIFE MANAGEMENT AREA	WILDLIFE MANAGEMENT AREA
		HYDROLOGIC FEATURES	HYDROLOGIC FEATURES
		RIVER OR STREAM (PERMANENT)	RIVER OR STREAM (PERMANENT)
		LAKE, POND OR RESERVOIR	LAKE, POND OR RESERVOIR
		STREAM (INTERMITTENT)	STREAM (INTERMITTENT)
		DRAINAGE DITCH	DRAINAGE DITCH
		WETLAND	WETLAND
		ISLAND OR LAND	ISLAND OR LAND
		REGIONAL WATERSHED	REGIONAL WATERSHED



Population (U.S. Census 2010): 64



To request information from this document in an alternative format, call 651-366-4718 or 1-800-657-3774 (Greater Minnesota); 711 or 1-800-627-3529 (Minnesota Relay). You may also send an e-mail to ADRequest.dot@state.mn.us. (Please request at least one week in advance.)