

TOWNSHIP OF EDEN

PREPARED BY THE
MINNESOTA DEPARTMENT OF TRANSPORTATION
OFFICE OF TRANSPORTATION SYSTEM MANAGEMENT

IN COOPERATION WITH
U.S. DEPARTMENT OF TRANSPORTATION
FEDERAL HIGHWAY ADMINISTRATION



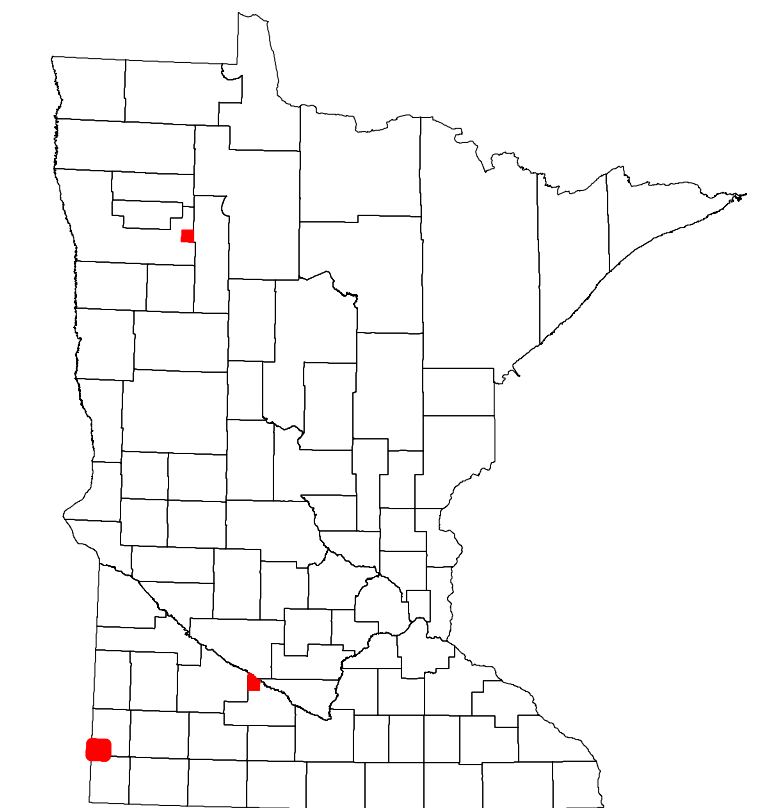
2023

Projection:
Transverse Mercator
NAD 1986
UTM Zone 15

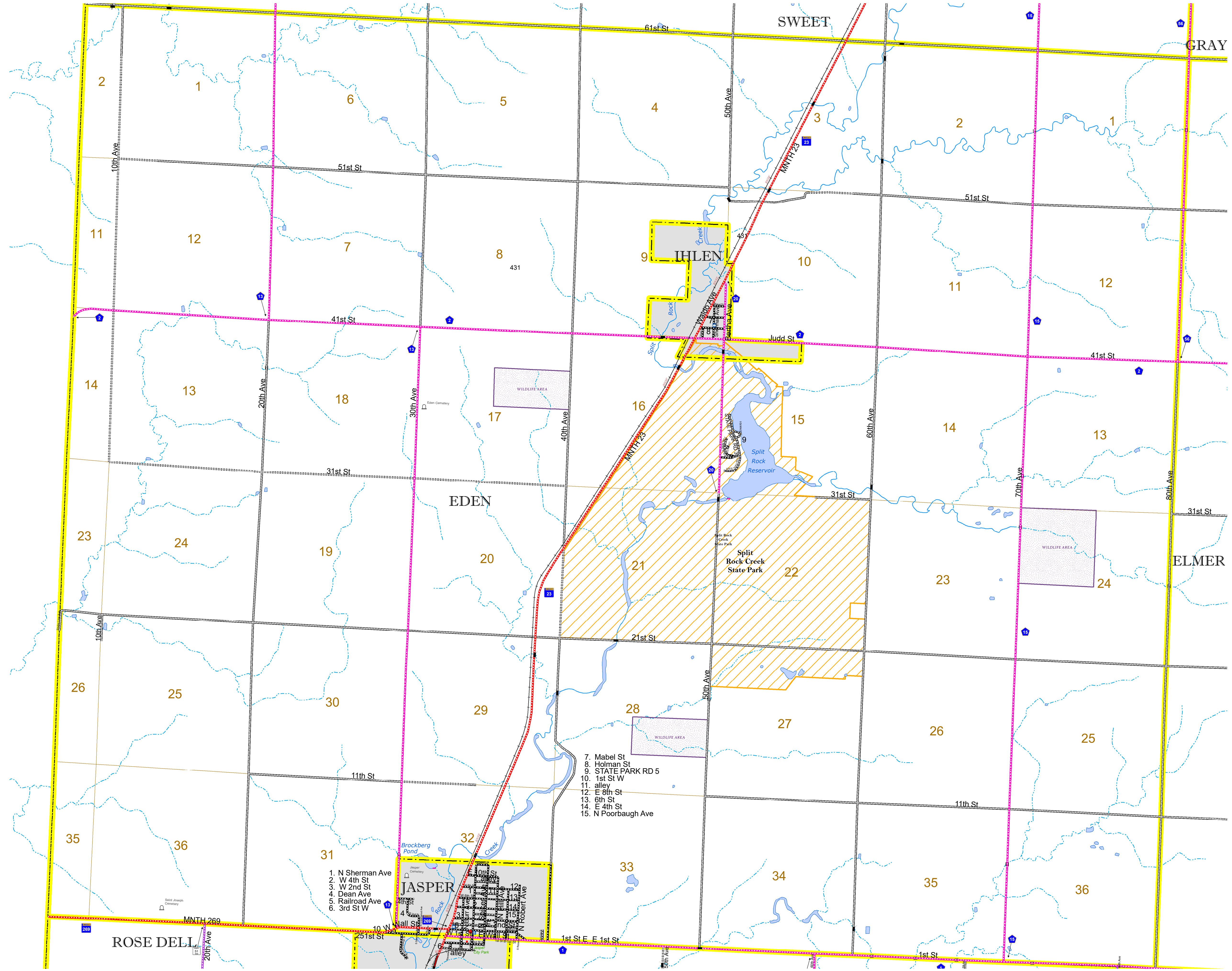


North American Datum
of 1986

ROAD AND ROADWAY FEATURES		AVIATION FEATURES	
INTERSTATE	CONCRETE	COMMERCIAL AIRPORT	GENERAL AIRPORT
US HIGHWAY	BITUMINOUS	AIRSTRIP	AIRSTRIP
MN HIGHWAY	GRAVEL	SEAPLANE	SEAPLANE
COUNTY STATE AID HIGHWAY	DIRT/UNIMPROVED	AIRPORT RUNWAY	AIRPORT RUNWAY
COUNTY ROAD	OTHER		
TOWNSHIP ROAD	UNKNOWN		
UNORGANIZED TERRITORY ROAD			
OTHER ROADS			
Municipal	RAMP OR CONNECTOR		
Private	INTERSTATE EXIT		
National Monument	GREAT RIVER ROAD		
National Wildlife			
State Game			
Military			
RAILROAD AND RAILWAY FEATURES		BOUNDARY FEATURES	
EMPIRE BUILDER STATION (AMTRAK)	TRIBAL LAND	STATE OF MINNESOTA	STATE OF MINNESOTA
NORTHSTAR STATION (COMMUTER)	COUNTY	COUNTY	COUNTY
	MUNICIPALITY	MUNICIPALITY	MUNICIPALITY
	UNORGANIZED TERRITORY	UNORGANIZED TERRITORY	UNORGANIZED TERRITORY
	FEDERAL ADJUSTED URBAN AREA (2014)	FEDERAL ADJUSTED URBAN AREA (2014)	FEDERAL ADJUSTED URBAN AREA (2014)
	CIVIL TOWNSHIP	CIVIL TOWNSHIP	CIVIL TOWNSHIP
	CONGRESSIONAL TOWNSHIP	CONGRESSIONAL TOWNSHIP	CONGRESSIONAL TOWNSHIP
	SECTION	SECTION	SECTION
	MILITARY	MILITARY	MILITARY
	VOYAGEURS NATIONAL PARK	VOYAGEURS NATIONAL PARK	VOYAGEURS NATIONAL PARK
	BOUNDARY WATERS CANOE AREA WILDERNESS	BOUNDARY WATERS CANOE AREA WILDERNESS	BOUNDARY WATERS CANOE AREA WILDERNESS
	STATE PARK	STATE PARK	STATE PARK
	REGIONAL PARK	REGIONAL PARK	REGIONAL PARK
	NATIONAL FOREST	NATIONAL FOREST	NATIONAL FOREST
	NATIONAL AND STATE FOREST	NATIONAL AND STATE FOREST	NATIONAL AND STATE FOREST
	STATE FOREST	STATE FOREST	STATE FOREST
	NATIONAL TRAIL	NATIONAL TRAIL	NATIONAL TRAIL
	WILDLIFE REFUGE AREA	WILDLIFE REFUGE AREA	WILDLIFE REFUGE AREA
	WILDLIFE MANAGEMENT AREA	WILDLIFE MANAGEMENT AREA	WILDLIFE MANAGEMENT AREA
	HYDROLOGIC FEATURES	HYDROLOGIC FEATURES	HYDROLOGIC FEATURES
	RIVER OR STREAM (PERMANENT)	RIVER OR STREAM (PERMANENT)	RIVER OR STREAM (PERMANENT)
	LAKE, POND OR RESERVOIR	LAKE, POND OR RESERVOIR	LAKE, POND OR RESERVOIR
	STREAM (INTERMITTENT)	STREAM (INTERMITTENT)	STREAM (INTERMITTENT)
	DRAINAGE DITCH	DRAINAGE DITCH	DRAINAGE DITCH
	WETLAND	WETLAND	WETLAND
	ISLAND OR LAND	ISLAND OR LAND	ISLAND OR LAND
	REGIONAL WATERSHED	REGIONAL WATERSHED	REGIONAL WATERSHED
CITY CENTERS			
STATE CAPITAL	CITY CENTER	CITY CENTER	CITY CENTER
COUNTY SEAT	CITY CENTER	CITY CENTER	CITY CENTER
	UNINCORPORATED COMMUNITY	UNINCORPORATED COMMUNITY	UNINCORPORATED COMMUNITY
PUBLIC SERVICE FEATURES			
MNDOT OFFICE			
MNDOT TRUCK STATION			
HIGHWAY PATROL DISTRICT OFFICE			
STATE TRAVEL INFORMATION CENTER			
REST AREA (Full Service)			
REST AREA (Vault Toilet)			
WAYSIDE (Vault or Pit Toilet)			
PARK AND RIDE LOT			
PORT OF ENTRY			
PUBLIC ACCESS POINT			
MN STATE COLLEGE AND UNIVERSITY SYSTEM (MNSCU)			
UNIVERSITY OF MN SYSTEM			
FAIRGROUNDS			
CULTURAL FEATURES			
STATE HISTORICAL MARKER			
HISTORIC DISTRICT			
HISTORIC SITE			
MONUMENT			



Population (U.S. Census 2010): 278



- 7. Mabel St
- 8. Holman St
- 9. STATE PARK RD 5
- 10. 1st St W
- 11. alley
- 12. E 8th St
- 13. 6th St
- 14. E 4th St
- 15. N Poorbaugh Ave

- 1. N Sherman Ave
- 2. W 4th St
- 3. W 2nd St
- 4. Dean Ave
- 5. Railroad Ave
- 6. 3rd St W

To request information from this document in an alternative format, call 651-366-4718 or 1-800-657-3774 (Greater Minnesota); 711 or 1-800-627-3529 (Minnesota Relay). You may also send an e-mail to ADAREquest.dot@state.mn.us. (Please request at least one week in advance.)