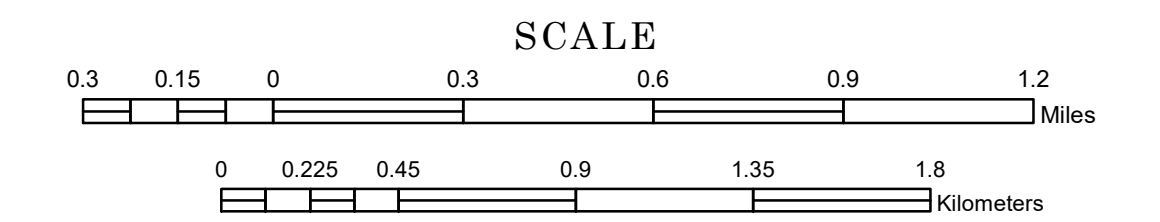


TOWNSHIP OF GENTILLY

PREPARED BY THE
MINNESOTA DEPARTMENT OF TRANSPORTATION
OFFICE OF TRANSPORTATION SYSTEM MANAGEMENT

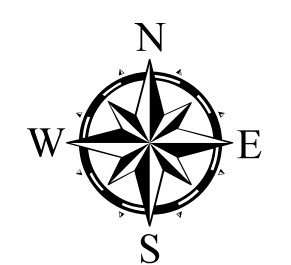
IN COOPERATION WITH
U.S. DEPARTMENT OF TRANSPORTATION
FEDERAL HIGHWAY ADMINISTRATION



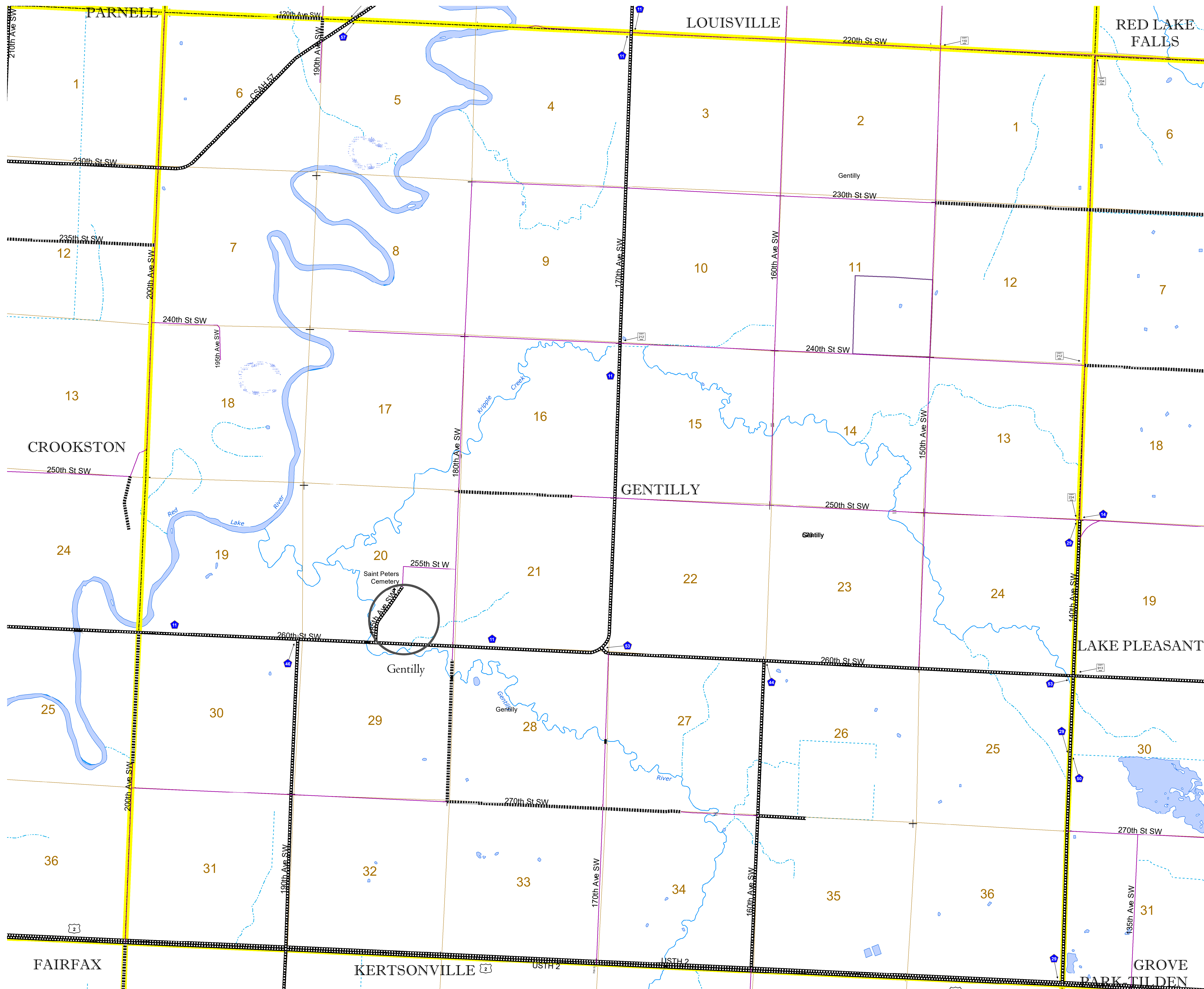
1 in = 1,600 ft

2023

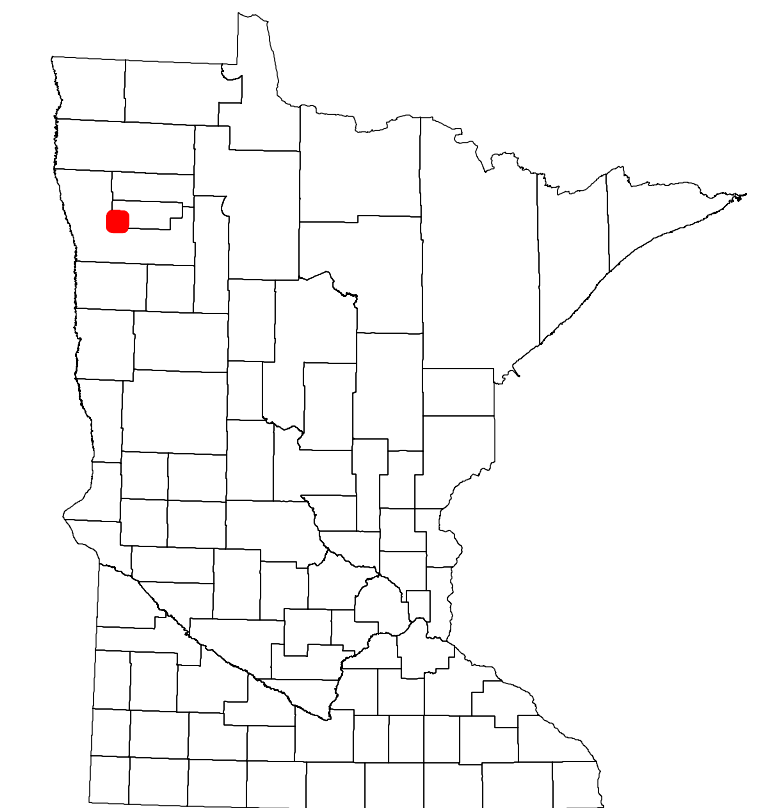
Projection:
Transverse Mercator
NAD 1986
UTM Zone 15



North American Datum
of 1986



| ROAD AND ROADWAY FEATURES | | AVIATION FEATURES | |
|---------------------------------|--|---------------------------------------|--|
| INTERSTATE | | CONCRETE | |
| US HIGHWAY | | BITUMINOUS | |
| MN HIGHWAY | | GRAVEL | |
| COUNTY STATE AID HIGHWAY | | DIRT/UNIMPROVED | |
| COUNTY ROAD | | OTHER | |
| TOWNSHIP ROAD | | UNKNOWN | |
| UNORGANIZED TERRITORY ROAD | | RAMP OR CONNECTOR | |
| OTHER ROADS | | INTERSTATE EXIT | |
| Municipal | | GREAT RIVER ROAD | |
| Private | | | |
| National Monument | | | |
| Nature Service | | | |
| National Park | | | |
| National Wildlife | | | |
| State Game | | | |
| Mulden | | | |
| State Park | | | |
| Present | | | |
| RAILROAD AND RAILWAY FEATURES | | BOUNDARY FEATURES | |
| EMPIRE BUILDER STATION (AMTRAK) | | TRIBAL LAND | |
| NORTHSTAR STATION (COMPUTER) | | STATE OF MINNESOTA | |
| LIGHT RAIL | | COUNTY | |
| BLUE LINE | | MUNICIPALITY | |
| GREEN LINE | | UNORGANIZED TERRITORY | |
| | | FEDERAL ADJUSTED URBAN AREA (2014) | |
| | | CIVIL TOWNSHIP | |
| | | CONGRESSIONAL TOWNSHIP | |
| | | SECTION | |
| | | MILITARY | |
| | | VOYAGEURS NATIONAL PARK | |
| | | BOUNDARY WATERS CANOE AREA WILDERNESS | |
| | | STATE PARK | |
| | | REGIONAL PARK | |
| | | NATIONAL FOREST | |
| | | NATIONAL AND STATE FOREST | |
| | | STATE FOREST | |
| | | NATIONAL TRAIL | |
| | | WILDLIFE REFUGE AREA | |
| | | WILDLIFE MANAGEMENT AREA | |
| | | HYDROLOGIC FEATURES | |
| | | RIVER OR STREAM (PERENNIAL) | |
| | | LAKE, POND OR RESERVOIR | |
| | | STREAM (INTERMITTENT) | |
| | | DRAINAGE DITCH | |
| | | WETLAND | |
| | | ISLAND OR LAND | |
| | | REGIONAL WATERSHED | |



Population (U.S. Census 2010): 280

To request information from this document in an alternative format, call 651-366-4718 or 1-800-657-3774 (Greater Minnesota); 711 or 1-800-627-3529 (Minnesota Relay). You may also send an e-mail to ADRequest.dot@state.mn.us. (Please request at least one week in advance.)