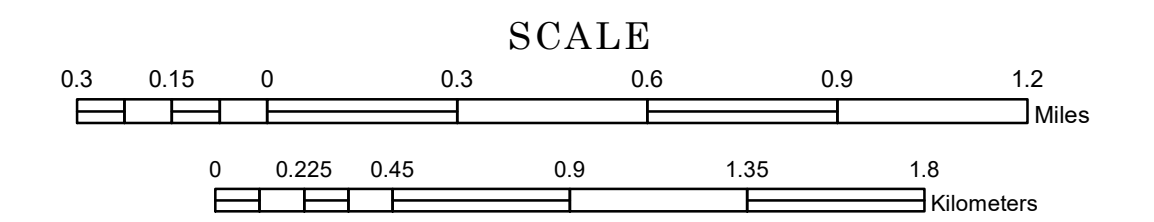


TOWNSHIP OF GODFREY

PREPARED BY THE
MINNESOTA DEPARTMENT OF TRANSPORTATION
OFFICE OF TRANSPORTATION SYSTEM MANAGEMENT

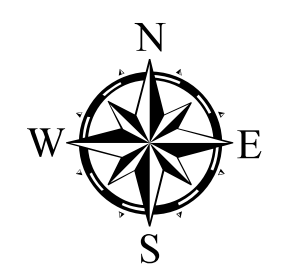
IN COOPERATION WITH
U.S. DEPARTMENT OF TRANSPORTATION
FEDERAL HIGHWAY ADMINISTRATION



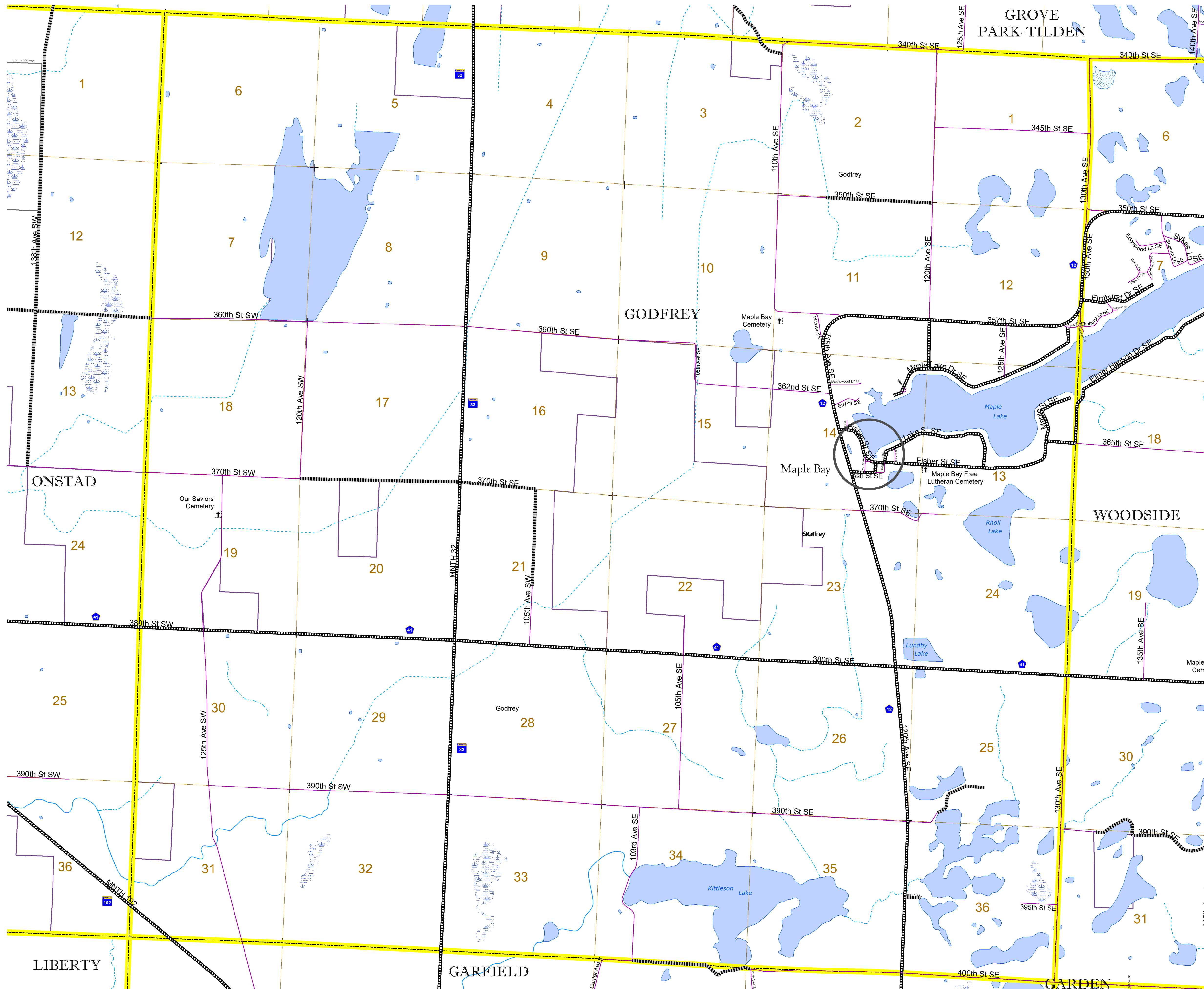
1 in = 1,600 ft

2023

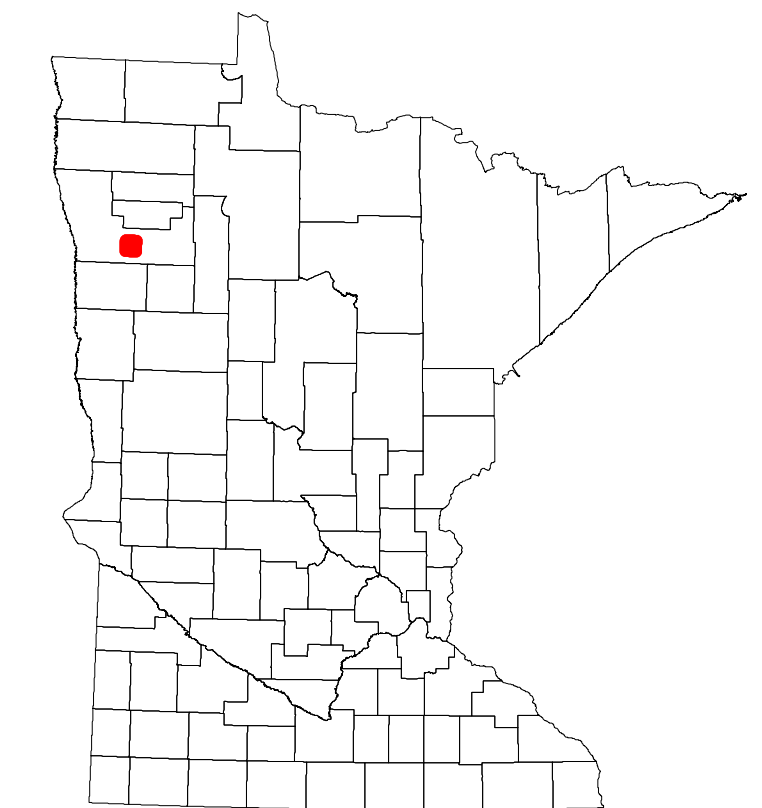
Projection:
Transverse Mercator
NAD 1986
UTM Zone 15



North American Datum
of 1986



ROAD AND ROADWAY FEATURES		BOUNDARY FEATURES	
INTERSTATE	CONCRETE	TRIBAL LAND	STATE OF MINNESOTA
US HIGHWAY	BITUMINOUS	STATE OF MINNESOTA	COUNTY
MN HIGHWAY	GRAVEL	COUNTY	MUNICIPALITY
COUNTY STATE AID HIGHWAY	DIRT/UNIMPROVED	MUNICIPALITY	UNINCORPORATED TOWNSHIP
COUNTY ROAD	OTHER	UNINCORPORATED TOWNSHIP	CIVIL TOWNSHIP CENTERS
TOWNSHIP ROAD	UNKNOWN	CIVIL TOWNSHIP CENTERS	CONGRESSIONAL TOWNSHIP
UNORGANIZED TERRITORY ROAD		CONGRESSIONAL TOWNSHIP	SECTION
OTHER ROADS		SECTION	MILITARY
Municipal	RAMP OR CONNECTOR	MILITARY	VOYAGEURS NATIONAL PARK
Private	INTERSTATE EXIT	VOYAGEURS NATIONAL PARK	BOUNDARY WATERS CANOE AREA WILDERNESS
Nature Service	GREAT RIVER ROAD	BOUNDARY WATERS CANOE AREA WILDERNESS	STATE PARK
Mulden		STATE PARK	REGIONAL PARK
		REGIONAL PARK	NATIONAL FOREST
		NATIONAL FOREST	NATIONAL AND STATE FOREST
		NATIONAL AND STATE FOREST	STATE FOREST
		STATE FOREST	NATIONAL TRAIL
		NATIONAL TRAIL	WILDLIFE REFUGUE AREA
		WILDLIFE REFUGUE AREA	WILDLIFE MANAGEMENT AREA
		WILDLIFE MANAGEMENT AREA	HYDROLOGIC FEATURES
		HYDROLOGIC FEATURES	RIVER OR STREAM (PERENNIAL)
		RIVER OR STREAM (PERENNIAL)	LAKE, POND OR RESERVOIR
		LAKE, POND OR RESERVOIR	STREAM (INTERMITTENT)
		STREAM (INTERMITTENT)	DRAINAGE DITCH
		DRAINAGE DITCH	WETLAND
		WETLAND	ISLAND OR LAND
		ISLAND OR LAND	REGIONAL WATERSHED
		REGIONAL WATERSHED	



Population (U.S. Census 2010): 313

To request information from this document in an alternative format, call 651-366-4718 or 1-800-657-3774 (Greater Minnesota); 711 or 1-800-627-3529 (Minnesota Relay). You may also send an e-mail to ADARrequest.dot@state.mn.us. (Please request at least one week in advance.)