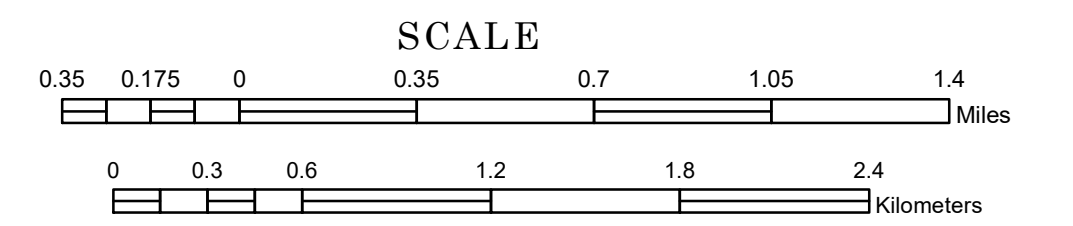


TOWNSHIP OF HONNER

PREPARED BY THE
MINNESOTA DEPARTMENT OF TRANSPORTATION
OFFICE OF TRANSPORTATION SYSTEM MANAGEMENT

IN COOPERATION WITH
U.S. DEPARTMENT OF TRANSPORTATION
FEDERAL HIGHWAY ADMINISTRATION

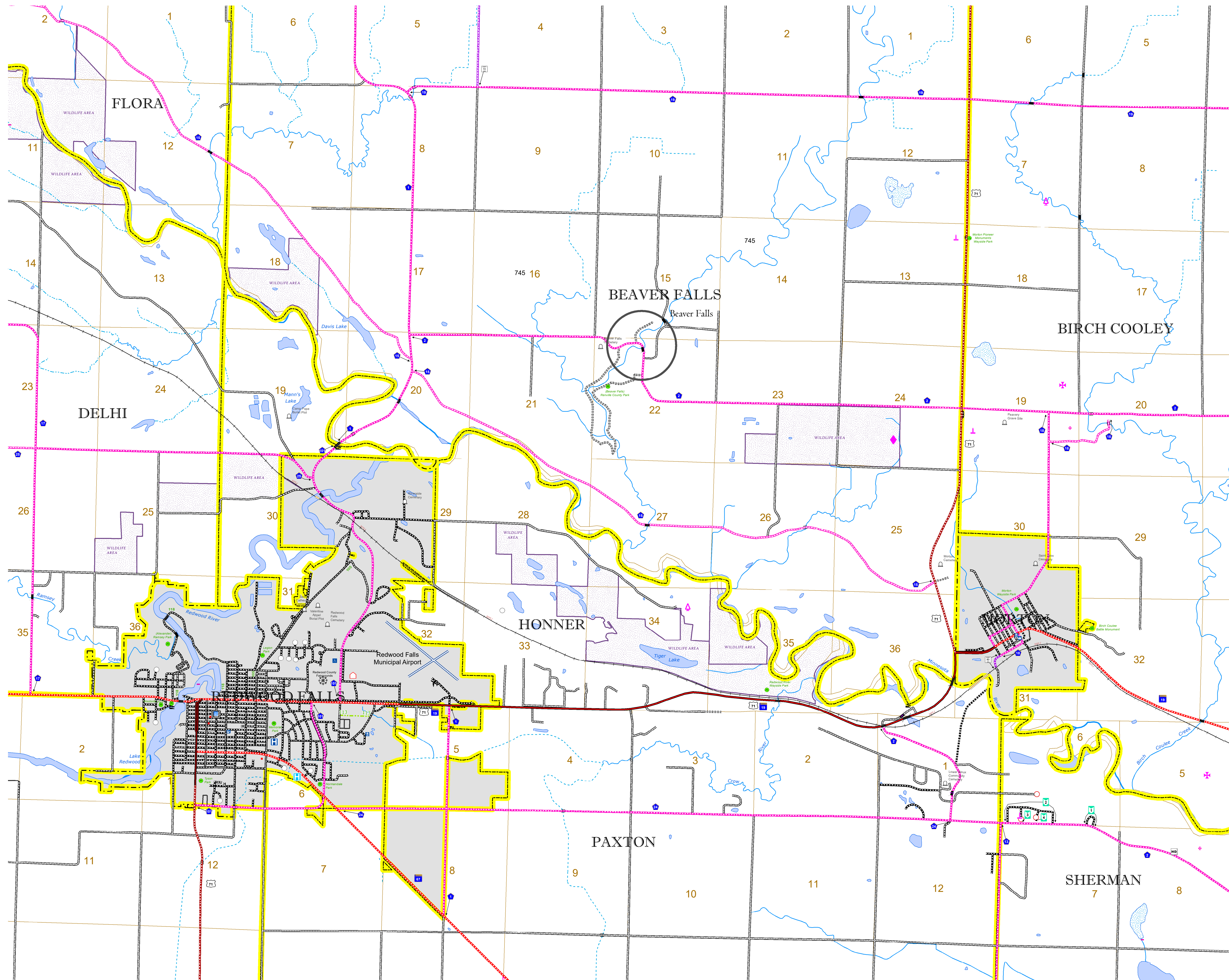


1 in = 2,000 ft
2022

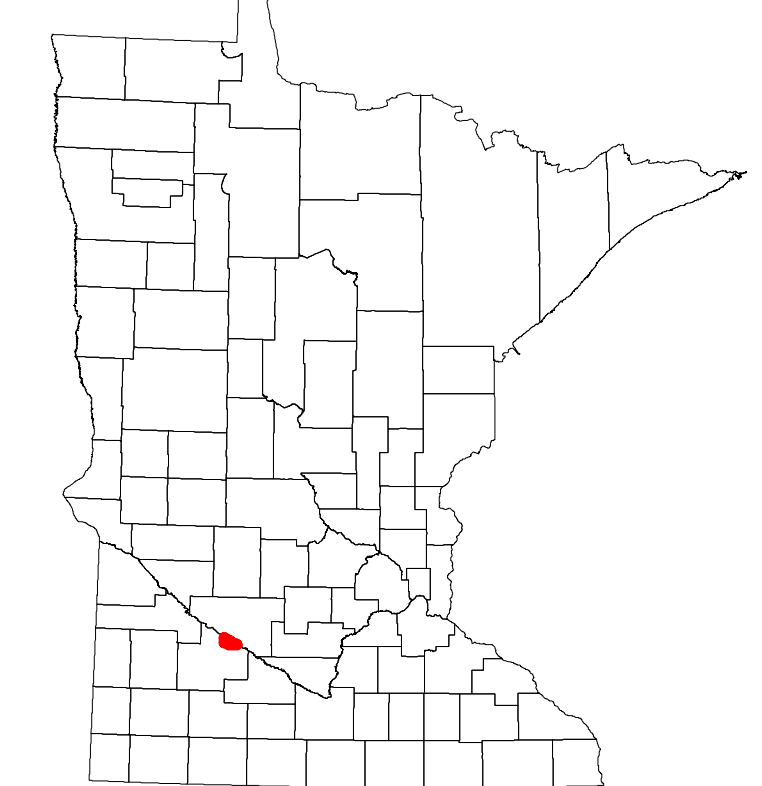
Projection:
Transverse Mercator
NAD 1986
UTM Zone 15



North American Datum
of 1986



| ROAD AND ROADWAY FEATURES | |
|--|---------------------------------------|
| INTERSTATE | CONCRETE |
| US HIGHWAY | BITUMINOUS |
| MN HIGHWAY | GRAVEL |
| COUNTY STATE AID HIGHWAY | DIRT/UNIMPROVED |
| COUNTY ROAD | OTHER |
| TOWNSHIP ROAD | UNKNOWN |
| UNORGANIZED TERRITORY ROAD | |
| OTHER ROADS | RAMP OR CONNECTOR |
| Municipal | INTERSTATE EXIT |
| Private | AVIATION FEATURES |
| National Monument | COMMERCIAL AIRPORT |
| State Forest | GENERAL AIRPORT |
| National Park | AIRSTRIP |
| National Wildlife Refuge | SEAPLANE |
| State Park | AIRPORT RUNWAY |
| Preserve | |
| | BOUNDARY FEATURES |
| RAILROAD AND RAILWAY FEATURES | |
| EMPIRE BUILDER STATION (AMTRAK) | TRIBAL LAND |
| NORTHSTAR STATION (COMPUTER) | STATE OF MINNESOTA |
| | COUNTY |
| | MUNICIPALITY |
| | UNORGANIZED TERRITORY |
| | FEDERAL ADJUSTED URBAN AREA (2014) |
| | CIVIL TOWNSHIP |
| | CONGRESSIONAL TOWNSHIP |
| | SECTION |
| | MILITARY |
| | VOYAGEURS NATIONAL PARK |
| | BOUNDARY WATERS CANOE AREA WILDERNESS |
| | STATE PARK |
| | REGIONAL PARK |
| | NATIONAL FOREST |
| | NATIONAL AND STATE FOREST |
| | STATE FOREST |
| | NATIONAL TRAIL |
| | WILDLIFE REFUGE AREA |
| | WILDLIFE MANAGEMENT AREA |
| INFRASTRUCTURE FEATURES | |
| LONG BRIDGE (200' OR GREATER SPAN) | HYDROLOGIC FEATURES |
| MAJOR BRIDGE (20' TO 200' SPAN) | RIVER OR STREAM (PERMANENT) |
| MINOR BRIDGE (5' TO 20' SPAN) | LAKE, POND OR RESERVOIR |
| DAM | STREAM (INTERMITTENT) |
| LOCK AND DAM | DRAINAGE DITCH |
| | WETLAND |
| | ISLAND OR LAND |
| | REGIONAL WATERSHED |
| CITY CENTERS | |
| STATE CAPITAL | |
| COUNTY SEAT | |
| CITY CENTER | |
| UNINCORPORATED COMMUNITY | |
| PUBLIC SERVICE FEATURES | |
| MNDOT OFFICE | |
| MNDOT TRUCK STATION | |
| HIGHWAY PATROL DISTRICT OFFICE | |
| STATE TRAVEL INFORMATION CENTER | |
| REST AREA (FULL SERVICE) | |
| REST AREA (VAULT TOILET) | |
| WAYSIDE (VAULT OR PVI TOILET) | |
| PARK AND RIDE LOT | |
| PORT OF ENTRY | |
| PUBLIC ACCESS POINT | |
| MN STATE COLLEGE AND UNIVERSITY SYSTEM (MNSCU) | |
| UNIVERSITY OF MN SYSTEM | |
| FAIRGROUNDS | |
| CULTURAL FEATURES | |
| STATE HISTORICAL MARKER | |
| HISTORIC DISTRICT | |
| HISTORIC SITE | |
| MONUMENT | |



Population (U.S. Census 2010): 79

To request information from this document in an alternative format, call 651-366-4718 or 1-800-657-3774 (Greater Minnesota); 711 or 1-800-627-3529 (Minnesota Relay). You may also send an e-mail to ADRequest.dot@state.mn.us. (Please request at least one week in advance.)