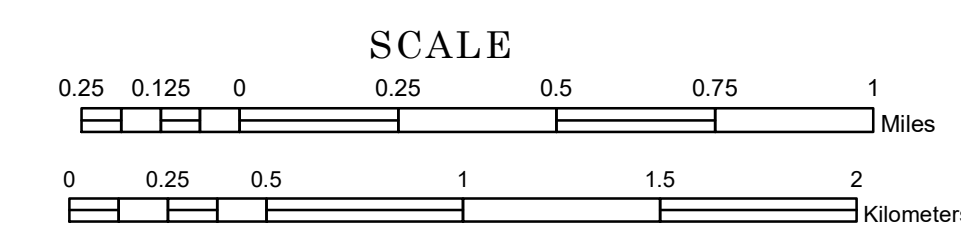


# TOWNSHIP OF SHERIDAN

PREPARED BY THE  
MINNESOTA DEPARTMENT OF TRANSPORTATION  
OFFICE OF TRANSPORTATION SYSTEM MANAGEMENT

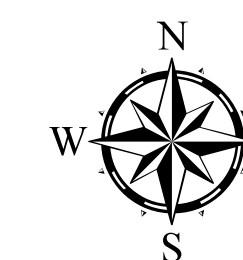
IN COOPERATION WITH  
U.S. DEPARTMENT OF TRANSPORTATION  
FEDERAL HIGHWAY ADMINISTRATION



1 in = 1,600 ft

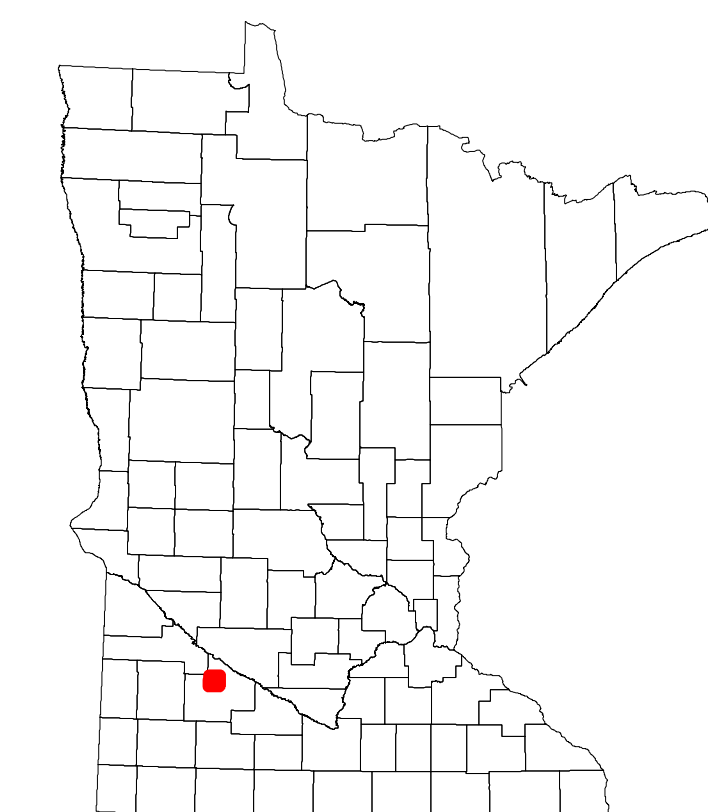
2022

Projection:  
Transverse Mercator  
NAD 1986  
UTM Zone 15

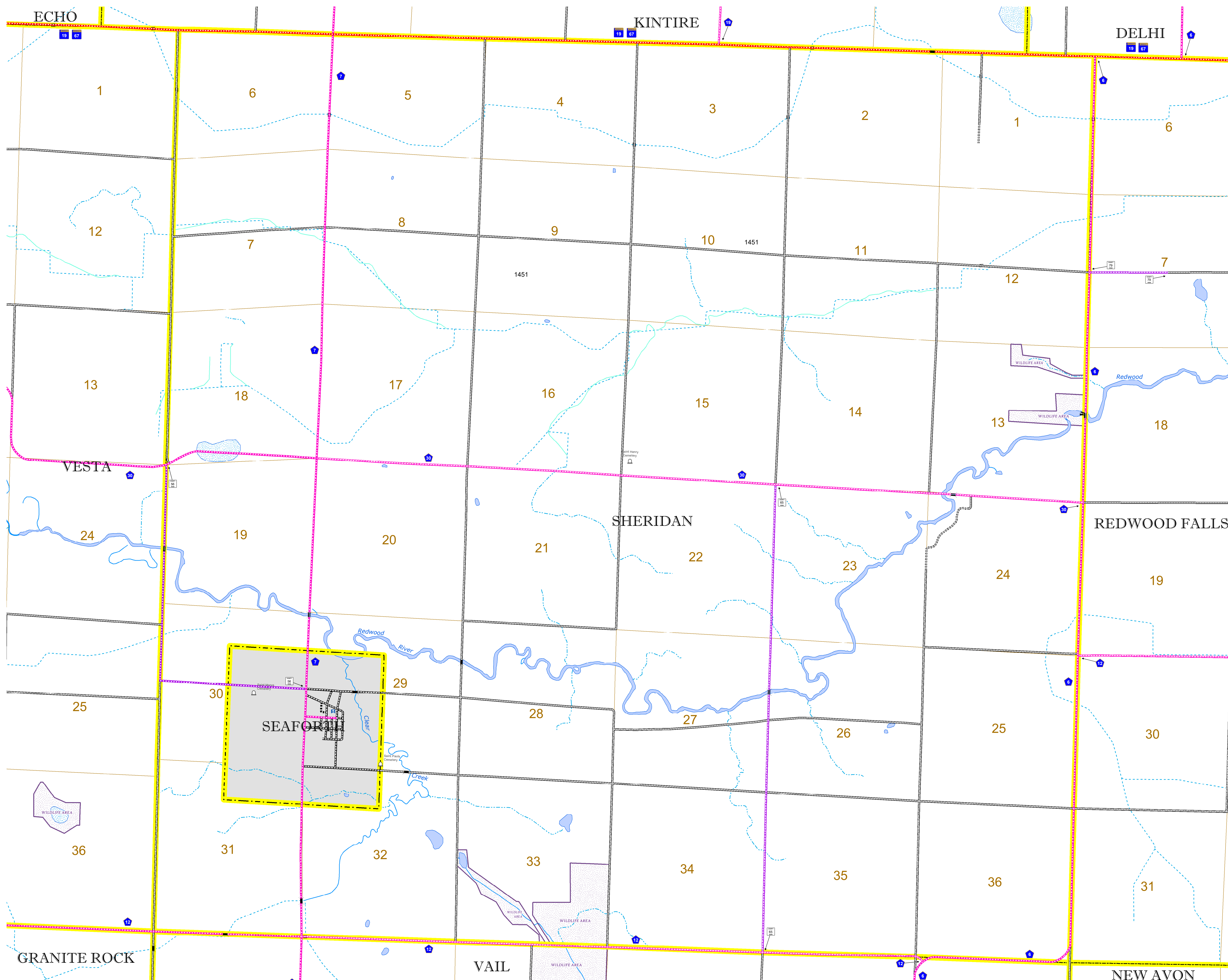


North American Datum  
of 1986

ROAD AND ROADWAY FEATURES		AVIATION FEATURES	
INTERSTATE	CONCRETE	COMMERCIAL AIRPORT	
US HIGHWAY	BITUMINOUS	GENERAL AIRPORT	
MN HIGHWAY	GRAVEL	AIRSTRIP	
COUNTY STATE AID HIGHWAY	DIRT/UNIMPROVED	SEAPLANE	
COUNTY ROAD	OTHER	AIRPORT RUNWAY	
TOWNSHIP ROAD	UNKNOWN		
UNORGANIZED TERRITORY ROAD			
OTHER ROADS		BOUNDARY FEATURES	
Municipal	RAMP OR CONNECTOR	TRIBAL LAND	
Private	INTERSTATE EXIT	STATE OF MINNESOTA	
National Wildlife Refuge	GREAT RIVER ROAD	COUNTY	
National Forest		MUNICIPALITY	
State Park		UNORGANIZED TERRITORY	
Presence		FEDERAL ADJUSTED URBAN AREA (2014)	
RAILROAD AND RAILWAY FEATURES		CIVIL TOWNSHIP	
EMPIRE BUILDER STATION (AMTRAK)	COMMERCIAL AIRPORT	CONGRESSIONAL TOWNSHIP	
NORTHSTAR STATION (COMMUTER)	GENERAL AIRPORT	SECTION	
LIGHT RAIL	AIRSTRIP	MILITARY	
BLUE LINE	SEAPLANE	VOYAGEURS NATIONAL PARK	
GREEN LINE	AIRPORT RUNWAY	BOUNDARY NATURAL PARK	
INFRASTRUCTURE FEATURES		STATE PARK	
LONG BRIDGE (200' or Greater Span)	TRIAL LAND	NATIONAL FOREST	
MAJOR BRIDGE (20' to 200' Span)	STATE OF MINNESOTA	NATIONAL AND STATE FOREST	
MINOR BRIDGE (5' to 20' Span)	COUNTY	STATE FOREST	
DAM	MUNICIPALITY	NATIONAL TRAIL	
LOCK-AND-DAM	UNORGANIZED TERRITORY	WILDLIFE REFUGE AREA	
CITY CENTERS		WILDLIFE MANAGEMENT AREA	
STATE CAPITAL	CONGRESSIONAL TOWNSHIP	HYDROLOGIC FEATURES	
COUNTY SEAT	SECTION	RIVER OR STREAM (PERMANENT)	
CITY CENTER	MILITARY	LAKE, POND OR RESERVOIR	
UNINCORPORATED COMMUNITY	VOYAGEURS NATIONAL PARK	STREAM (INTERMITTENT)	
PUBLIC SERVICE FEATURES		BOUNDARY NATURAL PARK	
MNDOT OFFICE	SECTION	WILDLIFE REFUGE AREA	
MNDOT TRUCK STATION	MILITARY	WILDLIFE MANAGEMENT AREA	
HIGHWAY PATROL DISTRICT OFFICE	VOYAGEURS NATIONAL PARK	HYDROLOGIC FEATURES	
STATE TRAVEL INFORMATION CENTER	BOUNDARY NATURAL PARK	RIVER OR STREAM (PERMANENT)	
REST AREA (Vault Toilets)	STATE PARK	LAKE, POND OR RESERVOIR	
REST AREA (Vault or Pit Toilets)	NATIONAL FOREST	STREAM (INTERMITTENT)	
PARK AND RIDE LOT	NATIONAL AND STATE FOREST	DRAINAGE DITCH	
PORT OF ENTRY	STATE FOREST	WETLAND	
PUBLIC ACCESS POINT	WILDLIFE REFUGE AREA	ISLAND OR LAND	
MN STATE COLLEGE AND UNIVERSITY SYSTEM (MNSCU)	WILDLIFE MANAGEMENT AREA	REGIONAL WATERSHED	
UNIVERSITY OF MN SYSTEM	HYDROLOGIC FEATURES		
FAIRGROUNDS	RIVER OR STREAM (PERMANENT)		
CULTURAL FEATURES			
STATE HISTORICAL MARKER	LAKE, POND OR RESERVOIR		
HISTORIC DISTRICT	STREAM (INTERMITTENT)		
HISTORIC SITE	DRAINAGE DITCH		
MONUMENT	WETLAND		



Population (U.S. Census 2010): 197



To request information from this document in an alternative format, call 651-366-4718 or 1-800-657-3774 (Greater Minnesota); 711 or 1-800-627-3529 (Minnesota Relay). You may also send an e-mail to ADArequest.dot@state.mn.us. (Please request at least one week in advance.)