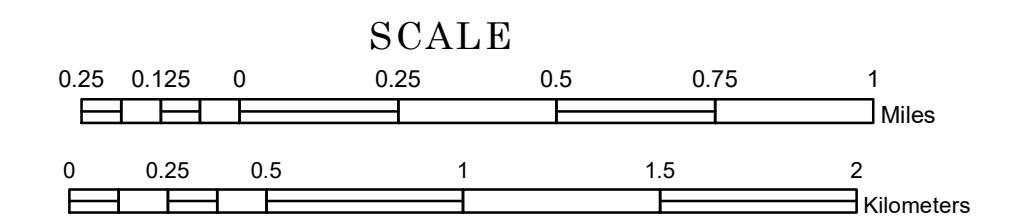


TOWNSHIP OF SWEDES FOREST

PREPARED BY THE
MINNESOTA DEPARTMENT OF TRANSPORTATION
OFFICE OF TRANSPORTATION SYSTEM MANAGEMENT

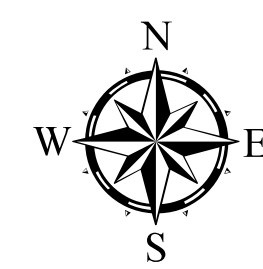
IN COOPERATION WITH
U.S. DEPARTMENT OF TRANSPORTATION
FEDERAL HIGHWAY ADMINISTRATION



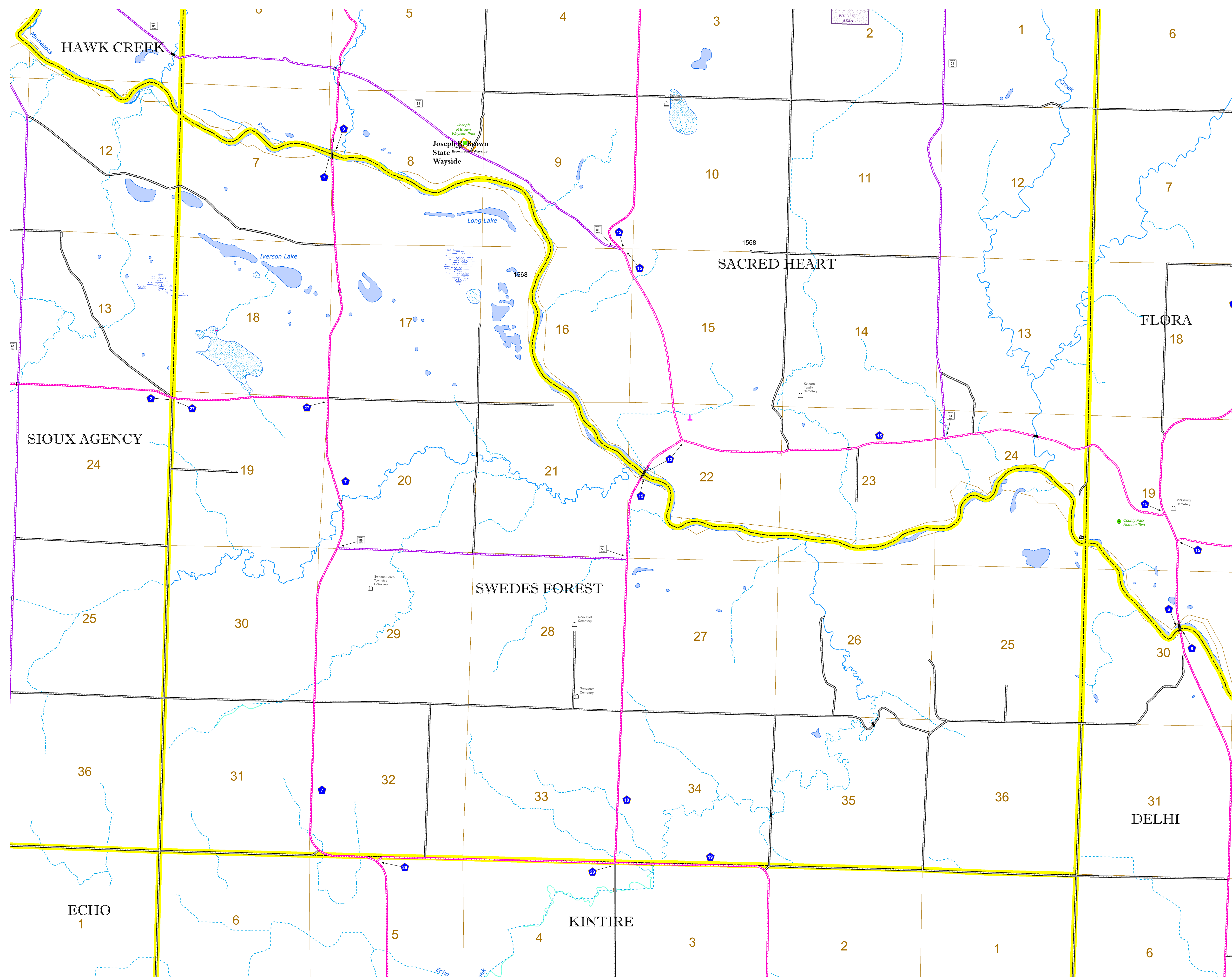
1 in = 1,600 ft

2022

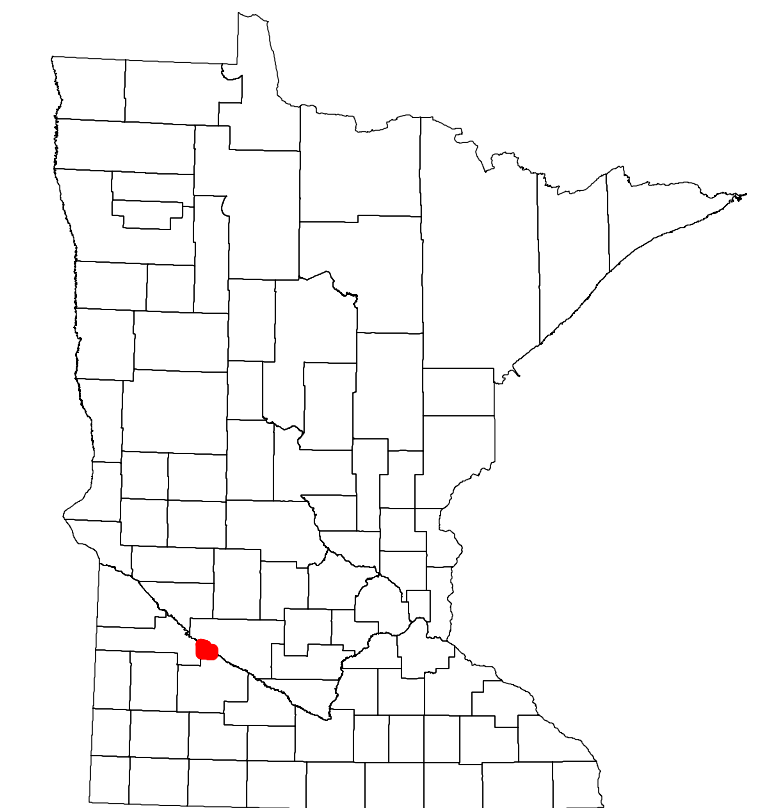
Projection:
Transverse Mercator
NAD 1986
UTM Zone 15



North American Datum
of 1986



| ROAD AND ROADWAY FEATURES | | RAILROAD AND RAILWAY FEATURES | | AVIATION FEATURES | |
|----------------------------|-----------------|---------------------------------|--------------------|-------------------|---------------------------------------|
| INTERSTATE | CONCRETE | EMPIRE BUILDER STATION (AMTRAK) | COMMERCIAL AIRPORT | GENERAL AIRPORT | TRIBAL LAND |
| US HIGHWAY | BITUMINOUS | NORTHSTAR STATION (COMMITTEE) | AIRSTRIP | AIRSTRIP | STATE OF MINNESOTA |
| MN HIGHWAY | GRAVEL | LIGHT RAIL | SEAPLANE | SEAPLANE | COUNTY |
| COUNTY STATE AID HIGHWAY | DIRT/UNIMPROVED | BLUE LINE | AIRPORT RUNWAY | AIRPORT RUNWAY | MUNICIPALITY |
| COUNTY ROAD | OTHER | GREEN LINE | | | UNORGANIZED TERRITORY |
| TOWNSHIP ROAD | UNKNOWN | | | | FEDERAL ADJUSTED URBAN AREA (2014) |
| UNORGANIZED TERRITORY ROAD | | | | | CIVIL TOWNSHIP |
| OTHER ROADS | | | | | CONGRESSIONAL TOWNSHIP |
| Municipal | | | | | SECTION |
| Private | | | | | MILITARY |
| National Monument | | | | | VOYAGEURS NATIONAL PARK |
| National Park | | | | | BOUNDARY WATERS CANOE AREA WILDERNESS |
| National Wildlife | | | | | STATE PARK |
| State Park | | | | | REGIONAL PARK |
| Preserve | | | | | NATIONAL FOREST |
| | | | | | NATIONAL AND STATE FOREST |
| | | | | | STATE FOREST |
| | | | | | NATIONAL TRAIL |
| | | | | | WILDLIFE REFUGUE AREA |
| | | | | | WILDLIFE MANAGEMENT AREA |
| | | | | | HYDROLOGIC FEATURES |
| | | | | | RIVER OR STREAM (PERMANENT) |
| | | | | | LAKE, POND OR RESERVOIR |
| | | | | | STREAM (INTERMITTENT) |
| | | | | | DRAINAGE DITCH |
| | | | | | WETLAND |
| | | | | | ISLAND OR LAND |
| | | | | | REGIONAL WATERSHED |



Population (U.S. Census 2010): 121

To request information from this document in an alternative format, call 651-366-4718 or 1-800-657-3774 (Greater Minnesota); 711 or 1-800-627-3529 (Minnesota Relay). You may also send an e-mail to ADarequest.dot@state.mn.us. (Please request at least one week in advance.)