

TOWNSHIP OF BEAVER FALLS

PREPARED BY THE
MINNESOTA DEPARTMENT OF TRANSPORTATION
OFFICE OF TRANSPORTATION SYSTEM MANAGEMENT

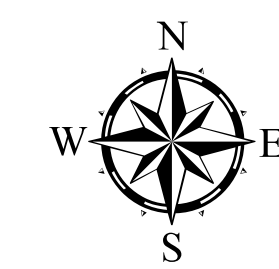
IN COOPERATION WITH
U.S. DEPARTMENT OF TRANSPORTATION
FEDERAL HIGHWAY ADMINISTRATION



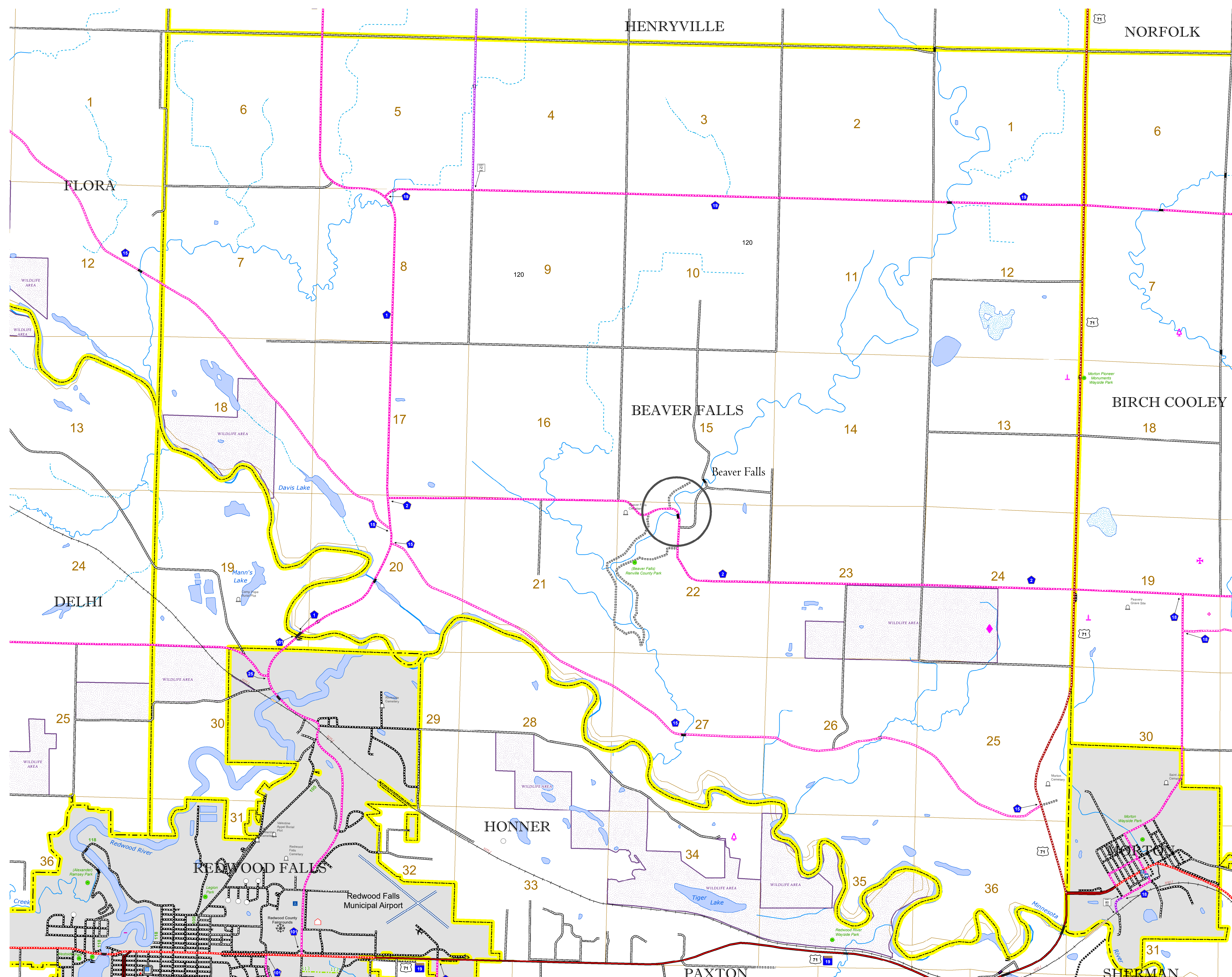
1 in = 1,600 ft

2022

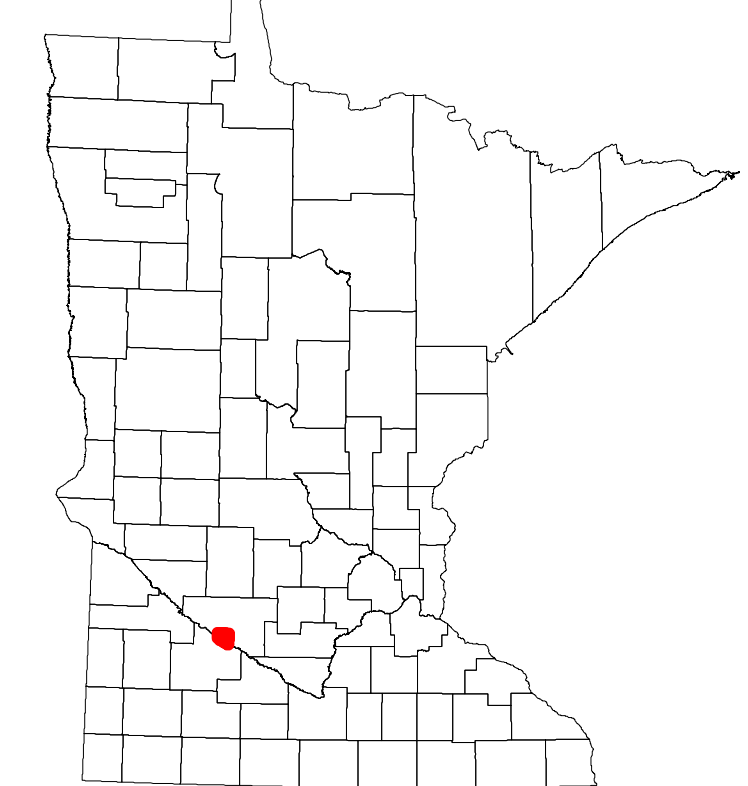
Projection:
Transverse Mercator
NAD 1986
UTM Zone 15



North American Datum
of 1986



ROAD AND ROADWAY FEATURES		RAILROAD AND RAILWAY FEATURES		AVIATION FEATURES		BOUNDARY FEATURES	
INTERSTATE	CONCRETE	EMPIRE BUILDER STATION (AMTRAK)	COMMERCIAL AIRPORT	TRIBAL LAND	STATE OF MINNESOTA	COUNTY	MUNICIPALITY
US HIGHWAY	BITUMINOUS	NORTHSTAR STATION (COMMUTER)	GENERAL AIRPORT	STATE OF MINNESOTA	COUNTY	MUNICIPALITY	UNINCORPORATED COMMUNITY
MN HIGHWAY	GRAVEL	LIGHT RAIL	AIRSTRIP	STATE OF MINNESOTA	COUNTY	MUNICIPALITY	UNINCORPORATED COMMUNITY
COUNTY STATE AID HIGHWAY	DIRT/UNIMPROVED	BLUE LINE	SEAPLANE	STATE OF MINNESOTA	COUNTY	MUNICIPALITY	UNINCORPORATED COMMUNITY
COUNTY ROAD	OTHER	GREEN LINE	AIRPORT RUNWAY	STATE OF MINNESOTA	COUNTY	MUNICIPALITY	UNINCORPORATED COMMUNITY
TOWNSHIP ROAD	UNKNOWN	LONG BRIDGE (200' OR GREATER SPAN)		STATE OF MINNESOTA	COUNTY	MUNICIPALITY	UNINCORPORATED COMMUNITY
UNORGANIZED TERRITORY ROAD		MAJOR BRIDGE (20' TO 200' SPAN)		STATE OF MINNESOTA	COUNTY	MUNICIPALITY	UNINCORPORATED COMMUNITY
OTHER ROADS		MINOR BRIDGE (5' TO 20' SPAN)		STATE OF MINNESOTA	COUNTY	MUNICIPALITY	UNINCORPORATED COMMUNITY
MUNICIPAL		DAM		STATE OF MINNESOTA	COUNTY	MUNICIPALITY	UNINCORPORATED COMMUNITY
PRIVATE		LOCK AND DAM		STATE OF MINNESOTA	COUNTY	MUNICIPALITY	UNINCORPORATED COMMUNITY
NATIONAL MONUMENT				STATE OF MINNESOTA	COUNTY	MUNICIPALITY	UNINCORPORATED COMMUNITY
STATE FOREST				STATE OF MINNESOTA	COUNTY	MUNICIPALITY	UNINCORPORATED COMMUNITY
NATIONAL WILDLIFE REFUGUE				STATE OF MINNESOTA	COUNTY	MUNICIPALITY	UNINCORPORATED COMMUNITY
STATE PARK				STATE OF MINNESOTA	COUNTY	MUNICIPALITY	UNINCORPORATED COMMUNITY
NATIONAL FOREST				STATE OF MINNESOTA	COUNTY	MUNICIPALITY	UNINCORPORATED COMMUNITY
STATE PARK				STATE OF MINNESOTA	COUNTY	MUNICIPALITY	UNINCORPORATED COMMUNITY
NATIONAL AND STATE FOREST				STATE OF MINNESOTA	COUNTY	MUNICIPALITY	UNINCORPORATED COMMUNITY
STATE FOREST				STATE OF MINNESOTA	COUNTY	MUNICIPALITY	UNINCORPORATED COMMUNITY
NATIONAL TRAIL				STATE OF MINNESOTA	COUNTY	MUNICIPALITY	UNINCORPORATED COMMUNITY
WILDLIFE REFUGE AREA				STATE OF MINNESOTA	COUNTY	MUNICIPALITY	UNINCORPORATED COMMUNITY
WILDLIFE MANAGEMENT AREA				STATE OF MINNESOTA	COUNTY	MUNICIPALITY	UNINCORPORATED COMMUNITY
HYDROLOGIC FEATURES				STATE OF MINNESOTA	COUNTY	MUNICIPALITY	UNINCORPORATED COMMUNITY
RIVER OR STREAM (PERENNIAL)				STATE OF MINNESOTA	COUNTY	MUNICIPALITY	UNINCORPORATED COMMUNITY
LAKE, POND OR RESERVOIR				STATE OF MINNESOTA	COUNTY	MUNICIPALITY	UNINCORPORATED COMMUNITY
STREAM (INTERMITTENT)				STATE OF MINNESOTA	COUNTY	MUNICIPALITY	UNINCORPORATED COMMUNITY
DRAINAGE DITCH				STATE OF MINNESOTA	COUNTY	MUNICIPALITY	UNINCORPORATED COMMUNITY
WETLAND				STATE OF MINNESOTA	COUNTY	MUNICIPALITY	UNINCORPORATED COMMUNITY
ISLAND OR LAND				STATE OF MINNESOTA	COUNTY	MUNICIPALITY	UNINCORPORATED COMMUNITY
REGIONAL WATERSHED				STATE OF MINNESOTA	COUNTY	MUNICIPALITY	UNINCORPORATED COMMUNITY



Population (U.S. Census 2010): 197

To request information from this document in an alternative format, call 651-366-4718 or 1-800-657-3774 (Greater Minnesota); 711 or 1-800-627-3529 (Minnesota Relay). You may also send an e-mail to ADArequest.dot@state.mn.us. (Please request at least one week in advance.)