

# TOWNSHIP OF BIRCH COOLEY

PREPARED BY THE  
MINNESOTA DEPARTMENT OF TRANSPORTATION  
OFFICE OF TRANSPORTATION SYSTEM MANAGEMENT

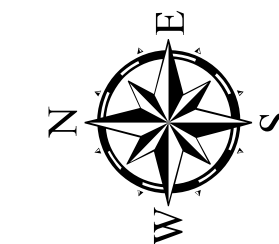
IN COOPERATION WITH  
U.S. DEPARTMENT OF TRANSPORTATION  
FEDERAL HIGHWAY ADMINISTRATION



1 in = 2,000 ft

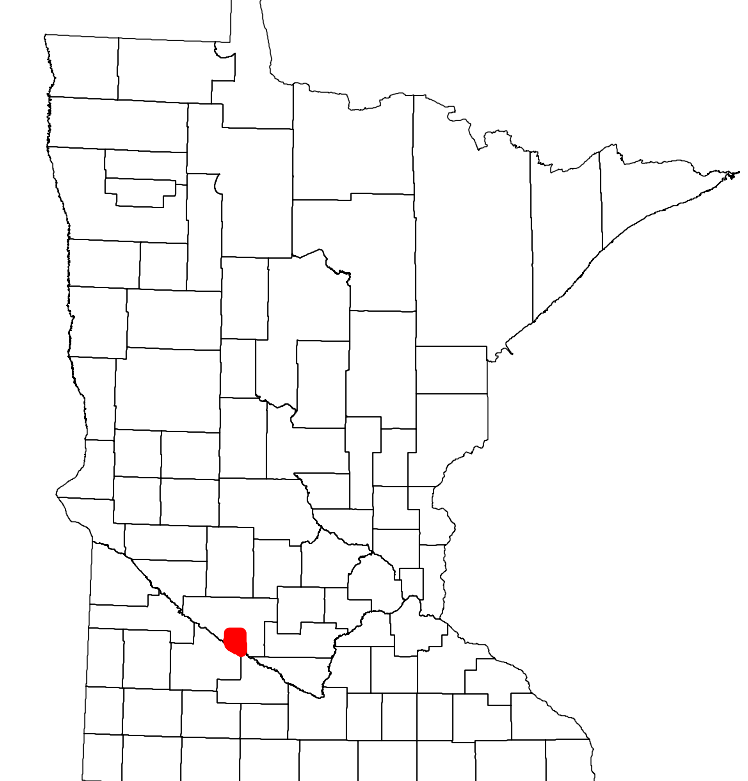
2022

Projection:  
Transverse Mercator  
NAD 1986  
UTM Zone 15

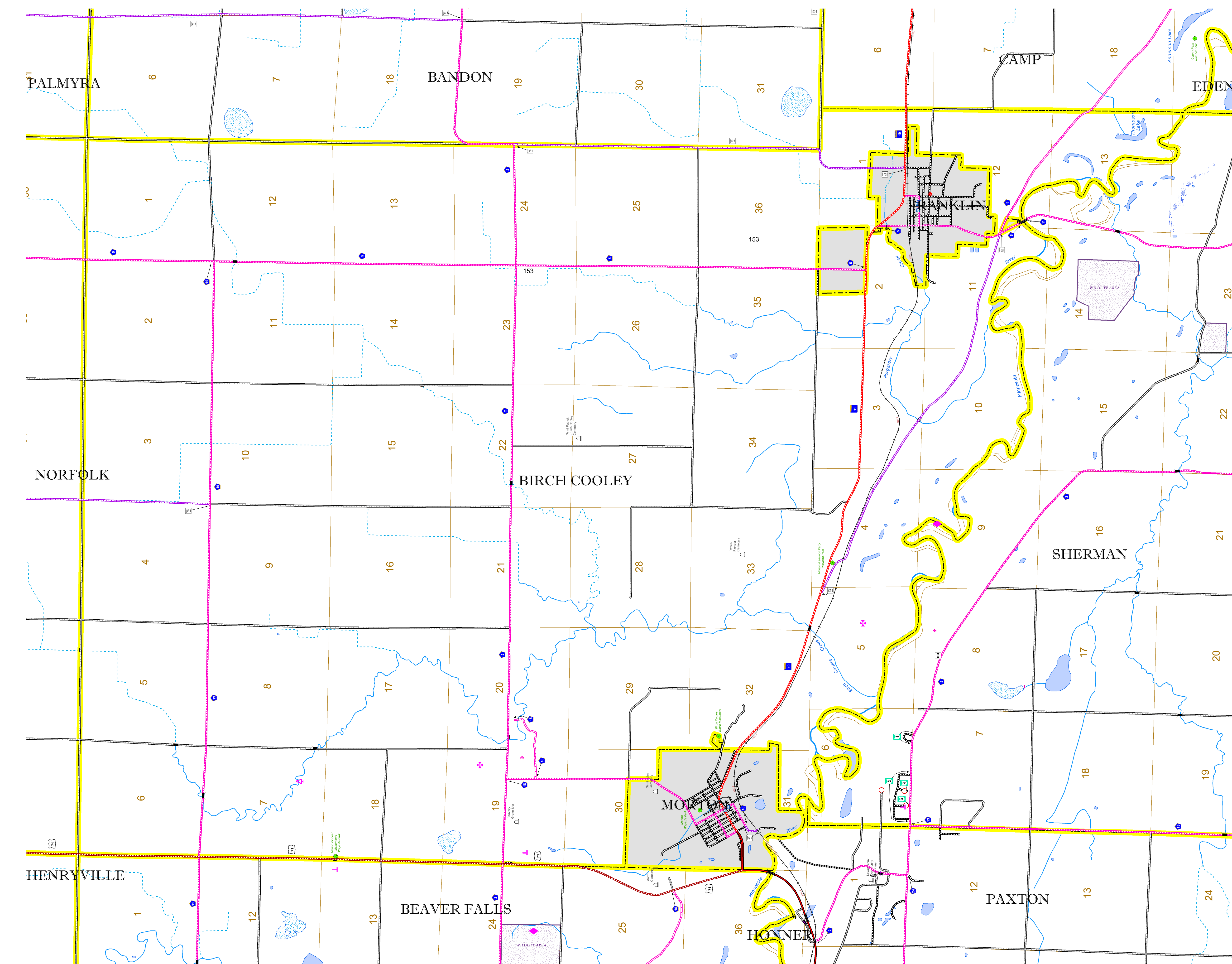


North American Datum  
of 1986

ROAD AND ROADWAY FEATURES		RAILROAD AND RAILWAY FEATURES		AVIATION FEATURES		BOUNDARY FEATURES	
INTERSTATE		EMPIRE BUILDER STATION (AMTRAK)		COMMERCIAL AIRPORT		TRIBAL LAND	
US HIGHWAY		NORTHSTAR STATION (COMPUTER)		GENERAL AIRPORT		STATE OF MINNESOTA	
MN HIGHWAY		LIGHT RAIL		AIRSTRIP		COUNTY	
COUNTY STATE AID HIGHWAY		BLUE LINE		SEAPLANE		MUNICIPALITY	
COUNTY ROAD		GREEN LINE		AIRPORT RUNWAY		UNORGANIZED TERRITORY	
TOWNSHIP ROAD		LONG BRIDGE (200' OR GREATER SWAY)		LOCK-AND-DAM		FEDERAL ADJUSTED URBAN AREA (2014)	
UNORGANIZED TERRITORY ROAD		MAJOR BRIDGE (20' TO 200' SWAY)		CITY CENTERS		CIVIL TOWNSHIP	
OTHER ROADS		MINOR BRIDGE (5' TO 20' SWAY)		STATE CAPITAL		CONGRESSIONAL TOWNSHIP	
Municipal		DAM		COUNTY SEAT		SECTION	
Nature Service		LOCK-AND-DAM		CITY CENTER		MILITARY	
Mulden		LOCK-AND-DAM		UNINCORPORATED COMMUNITY		VOYAGEURS NATIONAL PARK	
						BOUNDARY WATERS CANOE AREA WILDERNESS	
						STATE PARK	
						REGIONAL PARK	
						NATIONAL FOREST	
						NATIONAL AND STATE FOREST	
						STATE FOREST	
						WILDLIFE REFUGUE AREA	
						WILDLIFE MANAGEMENT AREA	
						HYDROLOGIC FEATURES	
						RIVER OR STREAM (PERENNIAL)	
						LAKE, POND OR RESERVOIR	
						STREAM (INTERMITTENT)	
						DRAINAGE DITCH	
						WETLAND	
						ISLAND OR LAND	
						REGIONAL WATERSHED	



Population (U.S. Census 2010): 245



To request information from this document in an alternative format, call 651-366-4718 or 1-800-657-3774 (Greater Minnesota); 711 or 1-800-627-3529 (Minnesota Relay). You may also send an e-mail to ADARquest.dot@state.mn.us. (Please request at least one week in advance.)