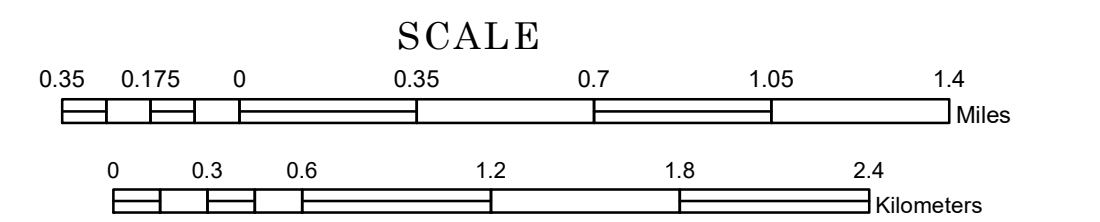


# TOWNSHIP OF HAWK CREEK

PREPARED BY THE  
MINNESOTA DEPARTMENT OF TRANSPORTATION  
OFFICE OF TRANSPORTATION SYSTEM MANAGEMENT

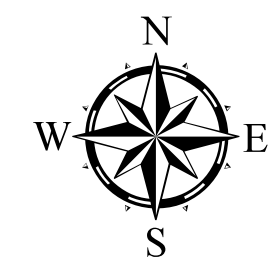
IN COOPERATION WITH  
U.S. DEPARTMENT OF TRANSPORTATION  
FEDERAL HIGHWAY ADMINISTRATION



1 in = 2,000 ft

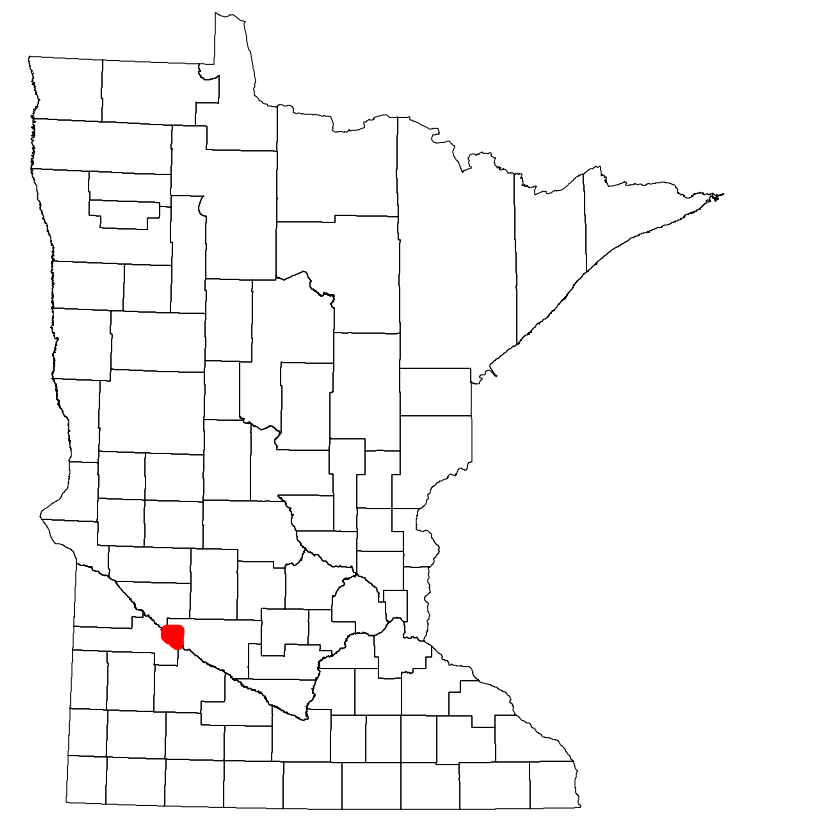
2022

Projection:  
Transverse Mercator  
NAD 1986  
UTM Zone 15

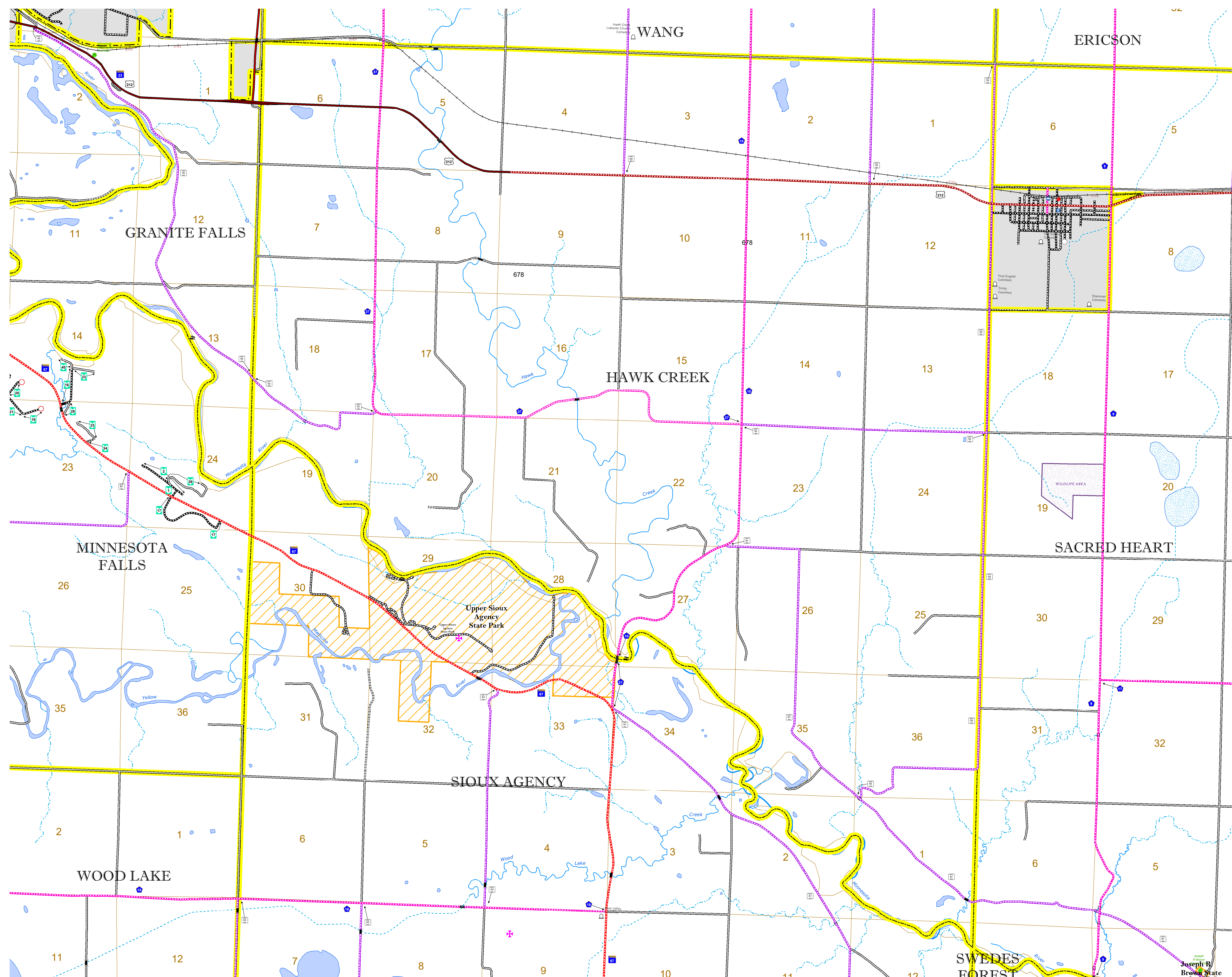


North American Datum  
of 1986

ROAD AND ROADWAY FEATURES			
INTERSTATE	CONCRETE		
US HIGHWAY	BITUMINOUS		
MN HIGHWAY	GRAVEL		
COUNTY STATE AID HIGHWAY	DIRT/UNIMPROVED		
COUNTY ROAD	OTHER		
TOWNSHIP ROAD	UNKNOWN		
UNORGANIZED TERRITORY ROAD			
OTHER ROADS			
Municipal	RAMP OR CONNECTOR		
Private	INTERSTATE EXIT		
National Monument	AVIATION FEATURES		
State Forest	COMMERCIAL AIRPORT		
Nature Service	GENERAL AIRPORT		
National Park	AIRSTRIP		
National Wildlife	SEAPLANE		
State Game	AIRPORT RUNWAY		
Mulden	State Park	Preserve	
RAILROAD AND RAILWAY FEATURES			
RAILWAY	COMMERCIAL AIRPORT		
EMPIRE BUILDER STATION (AMTRAK)	GENERAL AIRPORT		
NORTHSTAR STATION (COMPUTER)	AIRSTRIP		
LIGHT RAIL	SEAPLANE		
BLUE LINE	AIRPORT RUNWAY		
GREEN LINE			
INFRASTRUCTURE FEATURES			
LONG BRIDGE (200' OR GREATER SPAN)	TRIBAL LAND		
MAJOR BRIDGE (20' TO 200' SPAN)	STATE OF MINNESOTA		
MINOR BRIDGE (5' TO 20' SPAN)	COUNTY		
DAM	MUNICIPALITY		
LOCK AND DAM	UNORGANIZED TERRITORY		
	FEDERAL ADJUSTED URBAN AREA (2014)		
	CIVIL TOWNSHIP		
	CONGRESSIONAL TOWNSHIP		
	SECTION		
	MILITARY		
	VOYAGEURS NATIONAL PARK		
	BOUNDARY WATERS CANOE AREA WILDERNESS		
	STATE PARK		
	REGIONAL PARK		
	NATIONAL FOREST		
	NATIONAL AND STATE FOREST		
	STATE FOREST		
	NATIONAL TRAIL		
	WILDLIFE REFUGUE AREA		
	WILDLIFE MANAGEMENT AREA		
HYDROLOGIC FEATURES			
RIVER OR STREAM (PERMANENT)			
LAKE, POND OR RESERVOIR			
STREAM (INTERMITTENT)			
DRAINAGE DITCH			
WETLAND			
ISLAND OR LAND			
REGIONAL WATERSHED			
CITY CENTERS			
STATE CAPITAL			
COUNTY SEAT			
CITY CENTER			
UNINCORPORATED COMMUNITY			
PUBLIC SERVICE FEATURES			
MNDOT OFFICE			
MNDOT TRUCK STATION			
HIGHWAY PATROL DISTRICT OFFICE			
STATE TRAVEL INFORMATION CENTER			
REST AREA (FULL SERVICE)			
REST AREA (VAULT TOILET)			
WAYSIDE (VAULT OR PIT TOILET)			
PARK AND RIDE LOT			
PORT OF ENTRY			
PUBLIC ACCESS POINT			
MN STATE COLLEGE AND UNIVERSITY SYSTEM (MNSCU)			
UNIVERSITY OF MN SYSTEM			
FAIRGROUNDS			
CULTURAL FEATURES			
STATE HISTORICAL MARKER			
HISTORIC DISTRICT			
HISTORIC SITE			
MONUMENT			



Population (U.S. Census 2010): 201



To request information from this document in an alternative format, call 651-366-4718 or 1-800-657-3774 (Greater Minnesota); 711 or 1-800-627-3529 (Minnesota Relay). You may also send an e-mail to [ADArequest.dot@state.mn.us](mailto:ADArequest.dot@state.mn.us). (Please request at least one week in advance.)