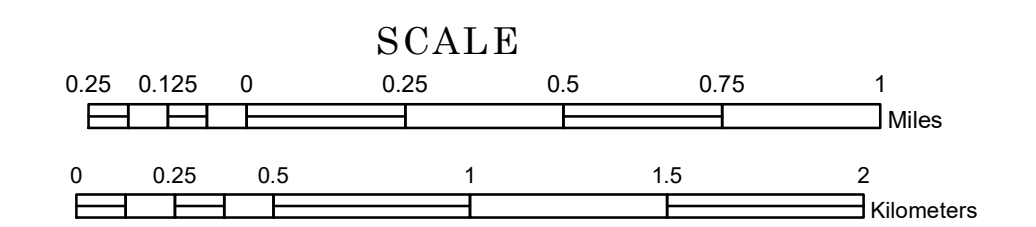


TOWNSHIP OF WHEATLAND

PREPARED BY THE
MINNESOTA DEPARTMENT OF TRANSPORTATION
OFFICE OF TRANSPORTATION SYSTEM MANAGEMENT

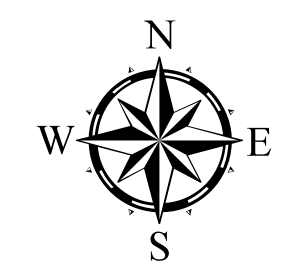
IN COOPERATION WITH
U.S. DEPARTMENT OF TRANSPORTATION
FEDERAL HIGHWAY ADMINISTRATION



1 in = 1,600 ft

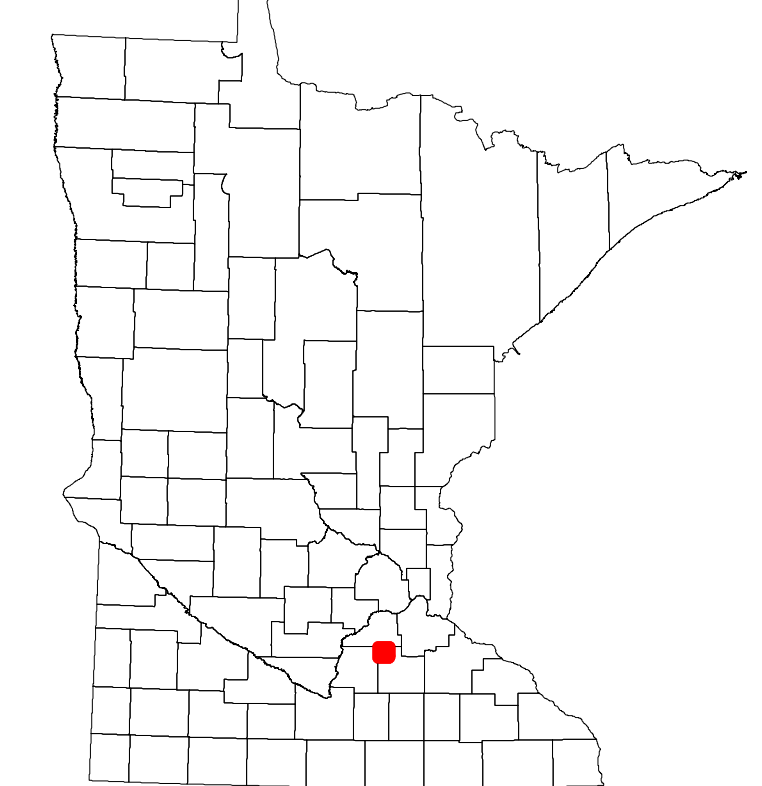
2023

Projection:
Transverse Mercator
NAD 1986
UTM Zone 15

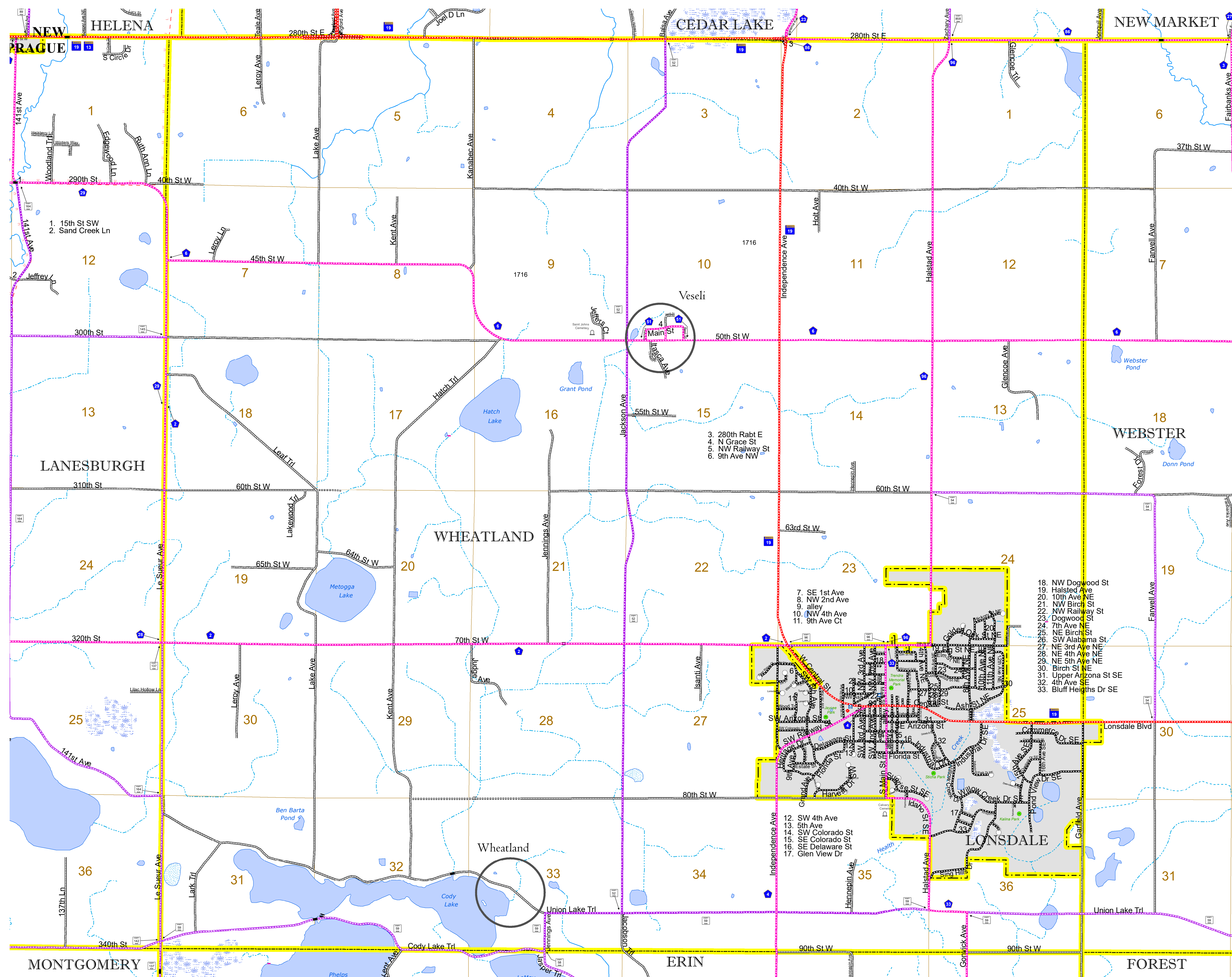


North American Datum
of 1986

ROAD AND ROADWAY FEATURES				
INTERSTATE	CONCRETE			
US HIGHWAY	BITUMINOUS			
MN HIGHWAY	GRAVEL			
COUNTY STATE AID HIGHWAY	DIRT/UNIMPROVED			
COUNTY ROAD	OTHER			
TOWNSHIP ROAD	UNKNOWN			
UNORGANIZED TERRITORY ROAD				
OTHER ROADS	RAMP OR CONNECTOR			
Municipal	Private	National Monument	State Forest	Interstate Exit
Nature Service	National Park	National Wildlife	State Game	Great River Road
Museum	Preserve			
RAILROAD AND RAILWAY FEATURES		AVIATION FEATURES		
EMPIRE BUILDER STATION (AMTRAK)	COMMERCIAL AIRPORT	GENERAL AIRPORT		
NORTHSTAR STATION (COMMITTEE)	AIRSTRIP	AIRSTRIP		
LIGHT RAIL	SEAPLANE	SEAPLANE		
BLUE LINE	AIRPORT RUNWAY	AIRPORT RUNWAY		
GREEN LINE				
INFRASTRUCTURE FEATURES		BOUNDARY FEATURES		
LONG BRIDGE (200' OR GREATER SPAN)	TRIBAL LAND	TRIBAL LAND		
MAJOR BRIDGE (20' TO 200' SPAN)	STATE OF MINNESOTA	STATE OF MINNESOTA		
MINOR BRIDGE (5' TO 20' SPAN)	COUNTY	COUNTY		
DAM	MUNICIPALITY	MUNICIPALITY		
LOCK AND DAM	UNORGANIZED TERRITORY	UNORGANIZED TERRITORY		
	FEDERAL ADJUSTED URBAN AREA (2014)	FEDERAL ADJUSTED URBAN AREA (2014)		
	CIVIL TOWNSHIP	CIVIL TOWNSHIP		
	CONGRESSIONAL TOWNSHIP	CONGRESSIONAL TOWNSHIP		
STATE CAPITAL	COUNTY SEAT	CITY CENTER	UNINCORPORATED COMMUNITY	
PUBLIC SERVICE FEATURES				
MNDOT OFFICE	MILITARY			
MNDOT TRUCK STATION	VOYAGEURS NATIONAL PARK			
HIGHWAY PATROL DISTRICT OFFICE	BOUNDARY WATERS CANOE AREA WILDERNESS			
STATE TRAVEL INFORMATION CENTER	STATE PARK			
REST AREA (Full Service)	REGIONAL PARK			
REST AREA (Vault Toilet)	NATIONAL FOREST			
WAYSIDE (Vault or Potty Toilet)	NATIONAL AND STATE FOREST			
PARK AND RIDE LOT	STATE FOREST			
PORT OF ENTRY	NATIONAL TRAIL			
PUBLIC ACCESS POINT	WILDLIFE REFUGE AREA			
MN STATE COLLEGE AND UNIVERSITY SYSTEM (MNSCU)	WILDLIFE MANAGEMENT AREA			
UNIVERSITY OF MN SYSTEM	HYDROLOGIC FEATURES			
FARMGROUNDS	RIVER OR STREAM (PERMANENT)			
	LAKE, POND OR RESERVOIR			
	STREAM (INTERMITTENT)			
	DRAINAGE DITCH			
STATE HISTORICAL MARKER	WETLAND			
HISTORIC DISTRICT	ISLAND OR LAND			
HISTORIC SITE	REGIONAL WATERSHED			
MONUMENT				



Population (U.S. Census 2010): 1237



To request information from this document in an alternative format, call 651-366-4718 or 1-800-657-3774 (Greater Minnesota); 711 or 1-800-627-3529 (Minnesota Relay). You may also send an e-mail to ADarequest.dot@state.mn.us. (Please request at least one week in advance.)