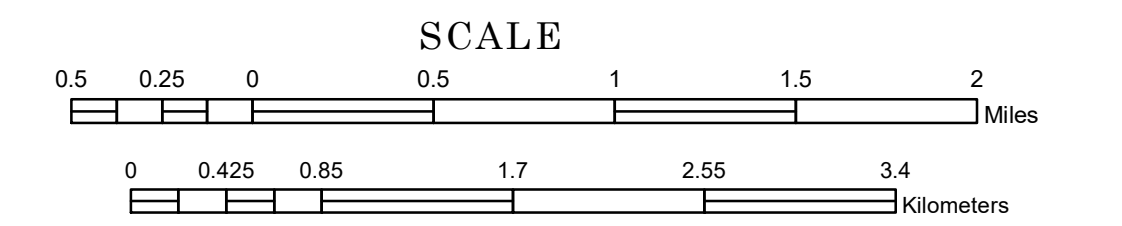


TOWNSHIP OF BEATTY

PREPARED BY THE
MINNESOTA DEPARTMENT OF TRANSPORTATION
OFFICE OF TRANSPORTATION SYSTEM MANAGEMENT

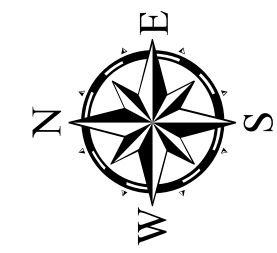
IN COOPERATION WITH
U.S. DEPARTMENT OF TRANSPORTATION
FEDERAL HIGHWAY ADMINISTRATION



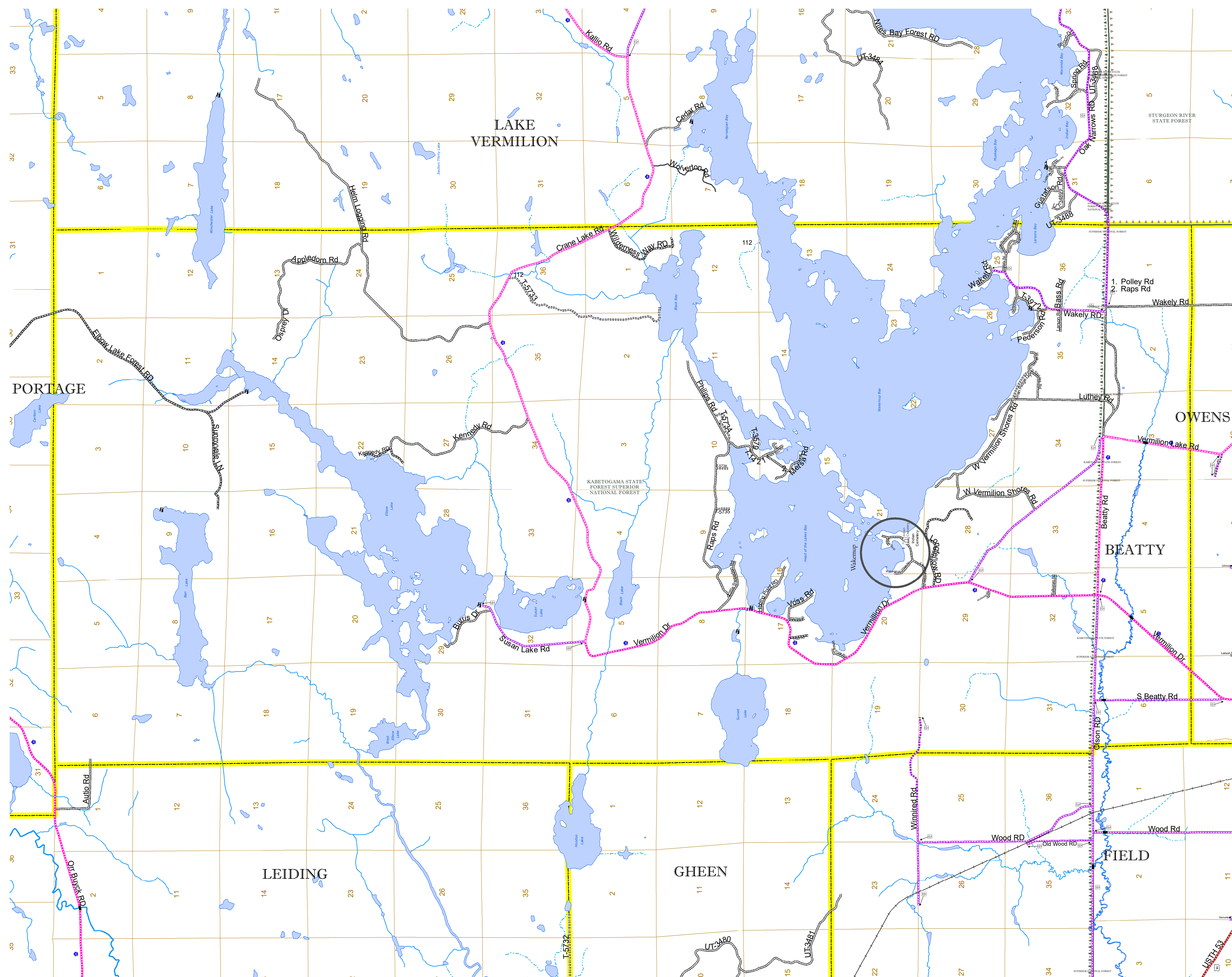
1 in = 2,800 ft

2022

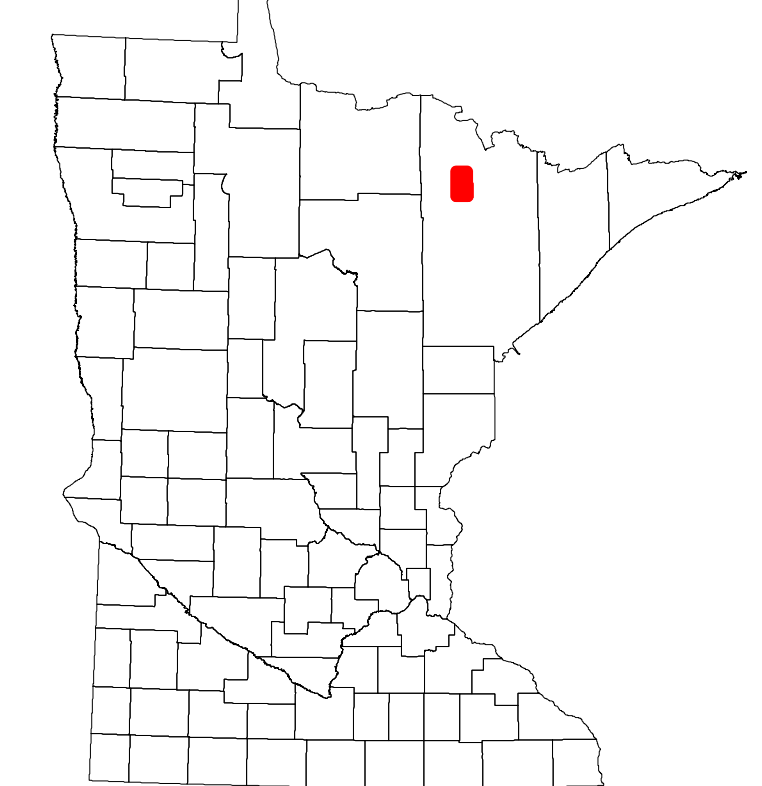
Projection:
Transverse Mercator
NAD 1986
UTM Zone 15



North American Datum
of 1986



ROAD AND ROADWAY FEATURES	
INTERSTATE	CONCRETE
US HIGHWAY	BITUMINOUS
MN HIGHWAY	GRAVEL
COUNTY STATE AID HIGHWAY	DIRT/UNIMPROVED
COUNTY ROAD	OTHER
TOWNSHIP ROAD	UNKNOWN
UNORGANIZED TERRITORY ROAD	RAMP OR CONNECTOR
OTHER ROADS	INTERSTATE EXIT
Municipal	National Park
Private	National Wildlife
National Monument	State Game
State Forest	State Park
State Game	Preserve
National Wildlife	Preserve
State Park	Preserve
State Park	Preserve
Preserve	Preserve
RAILROAD AND RAILWAY FEATURES	
EMPIRE BUILDER STATION (AMTRAK)	COMMERCIAL AIRPORT
NORTHSTAR STATION (COMMUTER)	GENERAL AIRPORT
LIGHT RAIL	AIRSTRIP
BLUE LINE	SEAPLANE
GREEN LINE	AIRPORT RUNWAY
INFRASTRUCTURE FEATURES	
LONG BRIDGE (200' OR GREATER SPAN)	TRIBAL LAND
MAJOR BRIDGE (20' TO 200' SPAN)	STATE OF MINNESOTA
MINOR BRIDGE (5' TO 20' SPAN)	COUNTY
DAM	MUNICIPALITY
LOCK AND DAM	UNORGANIZED TERRITORY
FEDERAL ADJUSTED URBAN AREA (2014)	CIVIL TOWNSHIP
CITY CENTER	CONGRESSIONAL TOWNSHIP
STATE CAPITAL	COUNTY SEAT
CITY CENTER	UNINCORPORATED COMMUNITY
PUBLIC SERVICE FEATURES	
MNDOT OFFICE	MILITARY
MNDOT TRUCK STATION	VOYAGEURS NATIONAL PARK
HIGHWAY PATROL DISTRICT OFFICE	BOUNDARY WATERS CANOE AREA WILDERNESS
STATE TRAVEL INFORMATION CENTER	STATE PARK
REST AREA (FULL SERVICE)	REGIONAL PARK
REST AREA (VAULT TOILET)	NATIONAL FOREST
WAYSIDE (VAULT OR PITY TOILET)	NATIONAL AND STATE FOREST
PARK AND RIDE LOT	STATE FOREST
PORT OF ENTRY	NATIONAL TRAIL
PUBLIC ACCESS POINT	WILDLIFE REFUGUE AREA
MN STATE COLLEGE AND UNIVERSITY SYSTEM (MNSCU)	WILDLIFE MANAGEMENT AREA
UNIVERSITY OF MN SYSTEM	HYDROLOGIC FEATURES
FAIRGROUNDS	RIVER OR STREAM (PERENNIAL)
CULTURAL FEATURES	LAKE, POND OR RESERVOIR
STATE HISTORICAL MARKER	STREAM (INTERMITTENT)
HISTORIC DISTRICT	DRAINAGE DITCH
HISTORIC SITE	WETLAND
MONUMENT	ISLAND OR LAND
	REGIONAL WATERSHED



Population (U.S. Census 2010): 372

To request information from this document in an alternative format, call 651-366-4718 or 1-800-657-3774 (Greater Minnesota); 711 or 1-800-627-3529 (Minnesota Relay). You may also send an e-mail to ADAREquest.dot@state.mn.us. (Please request at least one week in advance.)