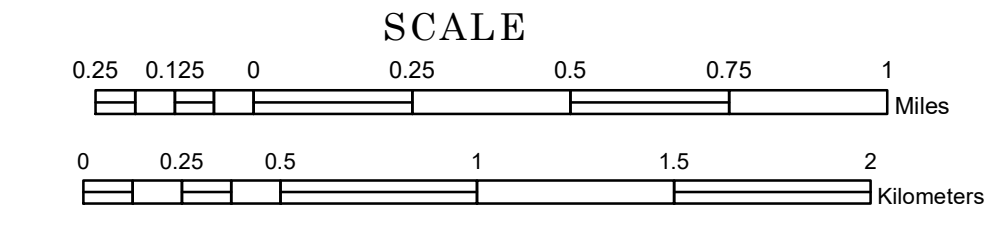


TOWNSHIP OF CHERRY

PREPARED BY THE
MINNESOTA DEPARTMENT OF TRANSPORTATION
OFFICE OF TRANSPORTATION SYSTEM MANAGEMENT

IN COOPERATION WITH
U.S. DEPARTMENT OF TRANSPORTATION
FEDERAL HIGHWAY ADMINISTRATION

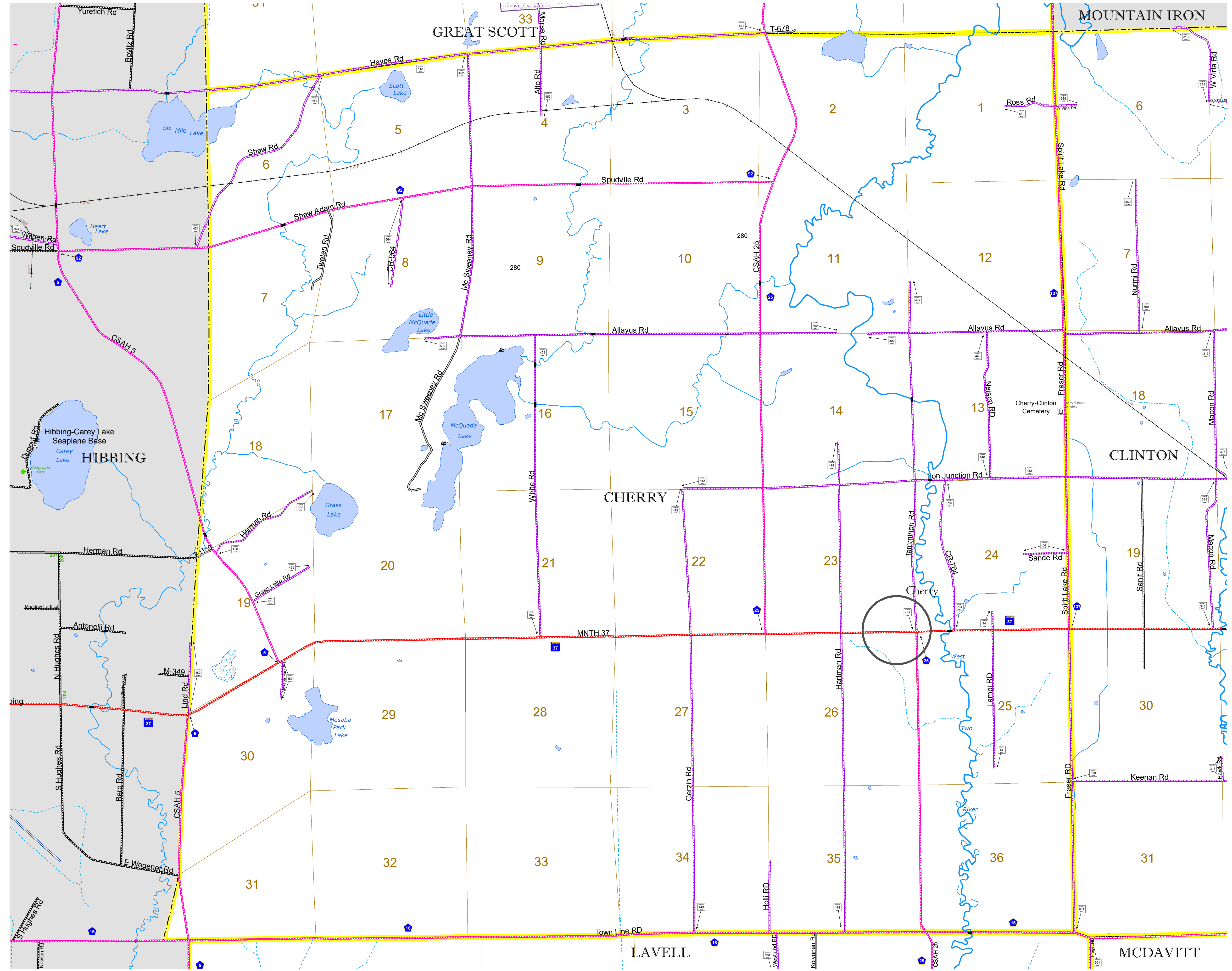


2022

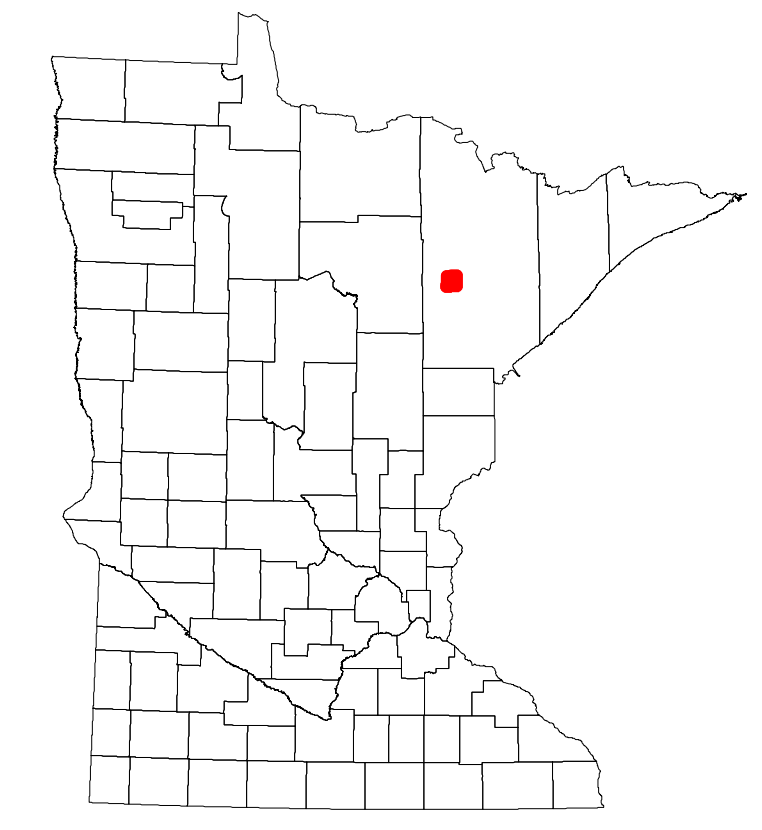
Projection:
Transverse Mercator
NAD 1986
UTM Zone 15



North American Datum
of 1986



ROAD AND ROADWAY FEATURES		RAILROAD AND RAILWAY FEATURES		CITY CENTERS		PUBLIC SERVICE FEATURES		CULTURAL FEATURES	
INTERSTATE	CONCRETE	EMPIRE BUILDER STATION (AMTRAK)	COMMERCIAL AIRPORT	STATE CAPITAL	MILITARY	STATE HISTORICAL MARKER	STATE HISTORICAL DISTRICT	STATE HISTORICAL SITE	STATE HISTORICAL MONUMENT
US HIGHWAY	BITUMINOUS	NORTHSTAR STATION (COMMUTER)	GENERAL AIRPORT	COUNTY SEAT	MILITARY	HISTORIC DISTRICT	HISTORIC DISTRICT	HISTORIC SITE	HISTORIC MONUMENT
MN HIGHWAY	GRAVEL	LIGHT RAIL	AIRSTRIP	CITY CENTER	MILITARY	HISTORIC DISTRICT	HISTORIC DISTRICT	HISTORIC SITE	HISTORIC MONUMENT
COUNTY STATE AID HIGHWAY	DIRT/UNIMPROVED	BLUE LINE	SEAPLANE	CITY CENTER	MILITARY	HISTORIC DISTRICT	HISTORIC DISTRICT	HISTORIC SITE	HISTORIC MONUMENT
COUNTY ROAD	OTHER	GREEN LINE	AIRPORT RUNWAY	CITY CENTER	MILITARY	HISTORIC DISTRICT	HISTORIC DISTRICT	HISTORIC SITE	HISTORIC MONUMENT
TOWNSHIP ROAD	UNKNOWN	INFRASTRUCTURE FEATURES	AVIATION FEATURES	CITY CENTER	MILITARY	HISTORIC DISTRICT	HISTORIC DISTRICT	HISTORIC SITE	HISTORIC MONUMENT
UNORGANIZED TERRITORY ROAD	UNKNOWN	LONG BRIDGE (200' OR GREATER SPAN)	GENERAL AIRPORT	CITY CENTER	MILITARY	HISTORIC DISTRICT	HISTORIC DISTRICT	HISTORIC SITE	HISTORIC MONUMENT
OTHER ROADS	RAMP OR CONNECTOR	MAJOR BRIDGE (20' TO 200' SPAN)	AIRSTRIP	CITY CENTER	MILITARY	HISTORIC DISTRICT	HISTORIC DISTRICT	HISTORIC SITE	HISTORIC MONUMENT
MUNICIPAL	INTERSTATE EXIT	MINOR BRIDGE (5' TO 20' SPAN)	SEAPLANE	CITY CENTER	MILITARY	HISTORIC DISTRICT	HISTORIC DISTRICT	HISTORIC SITE	HISTORIC MONUMENT
PRIVATE	AIRPORT RUNWAY	DAM	AIRPORT RUNWAY	CITY CENTER	MILITARY	HISTORIC DISTRICT	HISTORIC DISTRICT	HISTORIC SITE	HISTORIC MONUMENT
NATIONAL MONUMENT	AVIATION FEATURES	LOCK AND DAM	AVIATION FEATURES	CITY CENTER	MILITARY	HISTORIC DISTRICT	HISTORIC DISTRICT	HISTORIC SITE	HISTORIC MONUMENT
NATIONAL PARK	GENERAL AIRPORT	STATE CAPITAL	GENERAL AIRPORT	CITY CENTER	MILITARY	HISTORIC DISTRICT	HISTORIC DISTRICT	HISTORIC SITE	HISTORIC MONUMENT
NATIONAL WILDLIFE REFUGUE	AIRSTRIP	COUNTY SEAT	AIRSTRIP	CITY CENTER	MILITARY	HISTORIC DISTRICT	HISTORIC DISTRICT	HISTORIC SITE	HISTORIC MONUMENT
STATE PARK	SEAPLANE	CITY CENTER	SEAPLANE	CITY CENTER	MILITARY	HISTORIC DISTRICT	HISTORIC DISTRICT	HISTORIC SITE	HISTORIC MONUMENT
STATE FOREST	AIRPORT RUNWAY	CITY CENTER	AIRPORT RUNWAY	CITY CENTER	MILITARY	HISTORIC DISTRICT	HISTORIC DISTRICT	HISTORIC SITE	HISTORIC MONUMENT
STATE TRAIL	AVIATION FEATURES	CITY CENTER	AVIATION FEATURES	CITY CENTER	MILITARY	HISTORIC DISTRICT	HISTORIC DISTRICT	HISTORIC SITE	HISTORIC MONUMENT
WILDLIFE REFUGUE AREA	GENERAL AIRPORT	CITY CENTER	GENERAL AIRPORT	CITY CENTER	MILITARY	HISTORIC DISTRICT	HISTORIC DISTRICT	HISTORIC SITE	HISTORIC MONUMENT
WILDLIFE MANAGEMENT AREA	AIRSTRIP	CITY CENTER	AIRSTRIP	CITY CENTER	MILITARY	HISTORIC DISTRICT	HISTORIC DISTRICT	HISTORIC SITE	HISTORIC MONUMENT
HYDROLOGIC FEATURES	SEAPLANE	CITY CENTER	SEAPLANE	CITY CENTER	MILITARY	HISTORIC DISTRICT	HISTORIC DISTRICT	HISTORIC SITE	HISTORIC MONUMENT
RIVER OR STREAM (PERMANENT)	AIRPORT RUNWAY	CITY CENTER	AIRPORT RUNWAY	CITY CENTER	MILITARY	HISTORIC DISTRICT	HISTORIC DISTRICT	HISTORIC SITE	HISTORIC MONUMENT
LAKE, POND OR RESERVOIR	AVIATION FEATURES	CITY CENTER	AVIATION FEATURES	CITY CENTER	MILITARY	HISTORIC DISTRICT	HISTORIC DISTRICT	HISTORIC SITE	HISTORIC MONUMENT
STREAM (INTERMITTENT)	GENERAL AIRPORT	CITY CENTER	GENERAL AIRPORT	CITY CENTER	MILITARY	HISTORIC DISTRICT	HISTORIC DISTRICT	HISTORIC SITE	HISTORIC MONUMENT
DRAINAGE DITCH	AIRSTRIP	CITY CENTER	AIRSTRIP	CITY CENTER	MILITARY	HISTORIC DISTRICT	HISTORIC DISTRICT	HISTORIC SITE	HISTORIC MONUMENT
WETLAND	SEAPLANE	CITY CENTER	SEAPLANE	CITY CENTER	MILITARY	HISTORIC DISTRICT	HISTORIC DISTRICT	HISTORIC SITE	HISTORIC MONUMENT
ISLAND OR LAND	AIRPORT RUNWAY	CITY CENTER	AIRPORT RUNWAY	CITY CENTER	MILITARY	HISTORIC DISTRICT	HISTORIC DISTRICT	HISTORIC SITE	HISTORIC MONUMENT
REGIONAL WATERSHED	AVIATION FEATURES	CITY CENTER	AVIATION FEATURES	CITY CENTER	MILITARY	HISTORIC DISTRICT	HISTORIC DISTRICT	HISTORIC SITE	HISTORIC MONUMENT



Population (U.S. Census 2010): 860

To request information from this document in an alternative format, call 651-366-4718 or 1-800-657-3774 (Greater Minnesota); 711 or 1-800-627-3529 (Minnesota Relay). You may also send an e-mail to ADAREquest.dot@state.mn.us. (Please request at least one week in advance.)