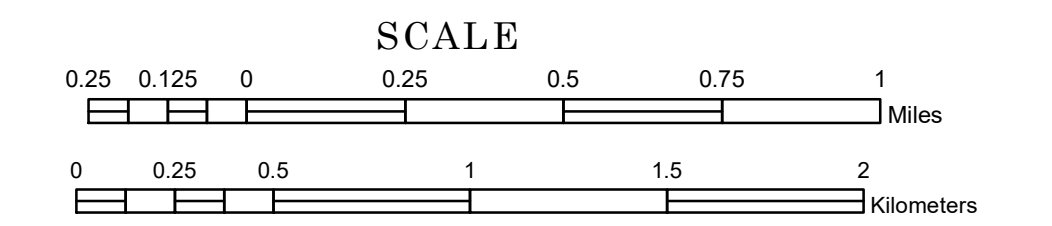


TOWNSHIP OF FLOODWOOD

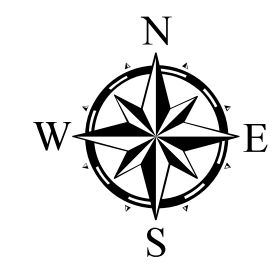
PREPARED BY THE
MINNESOTA DEPARTMENT OF TRANSPORTATION
OFFICE OF TRANSPORTATION SYSTEM MANAGEMENT

IN COOPERATION WITH
U.S. DEPARTMENT OF TRANSPORTATION
FEDERAL HIGHWAY ADMINISTRATION



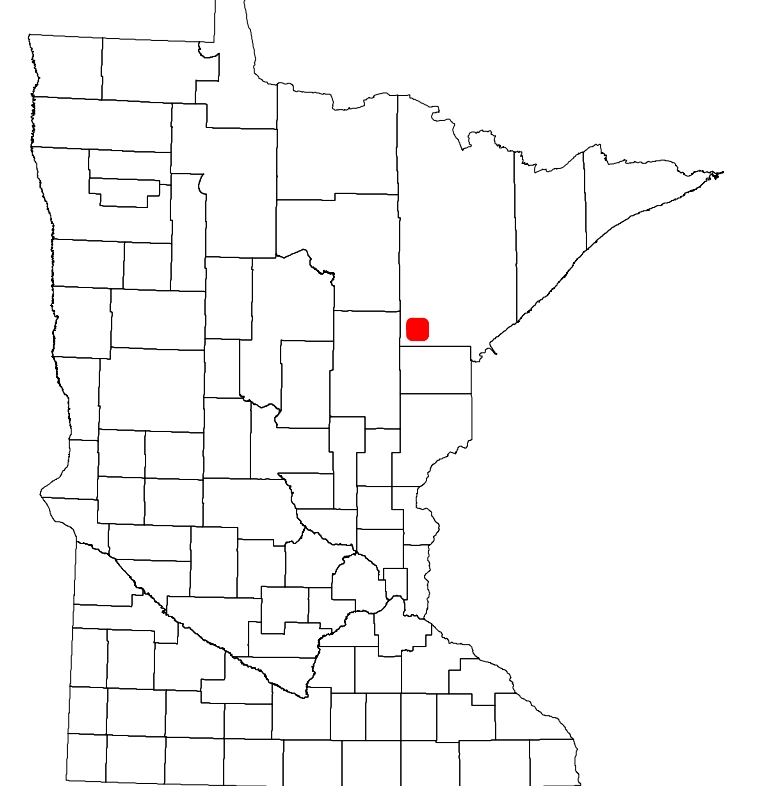
1 in = 1,600 ft
2022

Projection:
Transverse Mercator
NAD 1986
UTM Zone 15

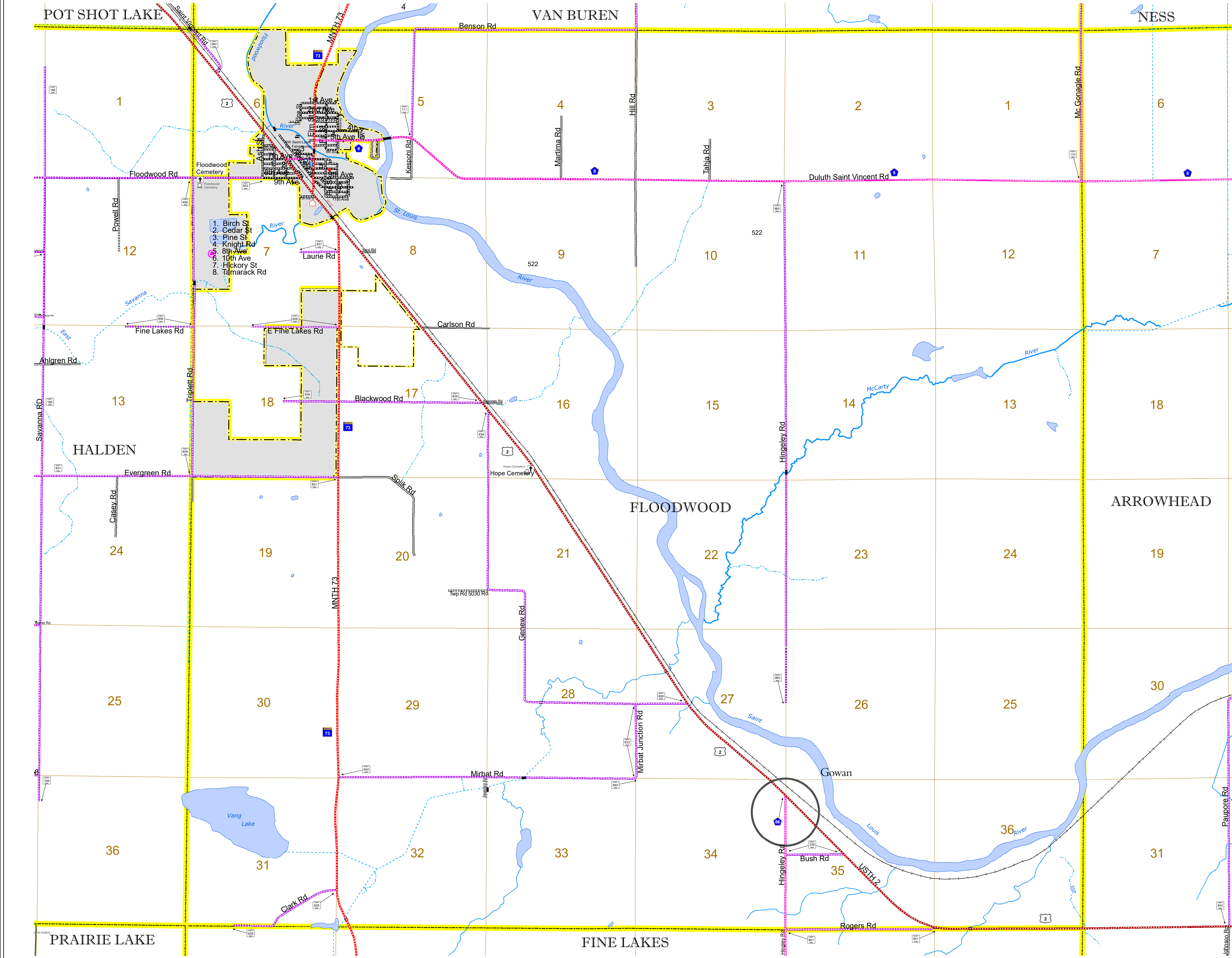


North American Datum
of 1986

ROAD AND ROADWAY FEATURES		RAILROAD AND RAILWAY FEATURES		AVIATION FEATURES		BOUNDARY FEATURES	
INTERSTATE		EMPIRE BUILDER STATION (AMTRAK)		COMMERCIAL AIRPORT		TRIBAL LAND	
US HIGHWAY		NORTHSTAR STATION (COMMUTER)		GENERAL AIRPORT		STATE OF MINNESOTA	
MN HIGHWAY		LIGHT RAIL		AIRSTRIP		COUNTY	
COUNTY STATE AID HIGHWAY		BLUE LINE		SEAPLANE		MUNICIPALITY	
COUNTY ROAD		GREEN LINE		AIRPORT RUNWAY		UNINCORPORATED TERRITORY	
TOWNSHIP ROAD		LONG BRIDGE (300' OR GREATER SPAN)		UNORGANIZED TERRITORY ROAD		FEDERAL ADJUSTED URBAN AREA (2014)	
UNORGANIZED TERRITORY ROAD		MAJOR BRIDGE (20' TO 300' SPAN)		OTHER ROADS		CIVIL TOWNSHIP	
MUNICIPAL		MINOR BRIDGE (5' TO 20' SPAN)		MUNICIPAL		CONGRESSIONAL TOWNSHIP	
PRIVATE		DAM		LOCK AND DAM		SECTION	
NATIONAL MONUMENT		CITY CENTERS		STATE CAPITAL		MILITARY	
NATIONAL WILDLIFE REFUGE		STATE CAPITAL		COUNTY SEAT		VOYAGEURS NATIONAL PARK	
STATE PARK		CITY CENTER		CITY CENTER		BOUNDARY WATERS CANOE AREA WILDERNESS	
STATE FOREST		UNINCORPORATED COMMUNITY		UNINCORPORATED COMMUNITY		STATE PARK	
NATIONAL FOREST		MNDOT OFFICE		MNDOT OFFICE		REGIONAL PARK	
NATIONAL AND STATE FOREST		MNDOT TRUCK STATION		MNDOT TRUCK STATION		NATIONAL FOREST	
STATE FOREST		HIGHWAY PATROL DISTRICT OFFICE		HIGHWAY PATROL DISTRICT OFFICE		NATIONAL TRAIL	
WILDLIFE REFUGE AREA		STATE TRAVEL INFORMATION CENTER		STATE TRAVEL INFORMATION CENTER		WILDLIFE REFUGE AREA	
WILDLIFE MANAGEMENT AREA		REST AREA (FULL SERVICE)		REST AREA (FULL SERVICE)		WILDLIFE MANAGEMENT AREA	
HYDROLOGIC FEATURES		REST AREA (VAULT TOILET)		REST AREA (VAULT TOILET)		HYDROLOGIC FEATURES	
RIVER OR STREAM (PERMANENT)		WAYSIDE (VAULT OR PIT TOILET)		WAYSIDE (VAULT OR PIT TOILET)		RIVER OR STREAM (PERMANENT)	
LAKE, POND OR RESERVOIR		PARK AND RIDE LOT		PARK AND RIDE LOT		LAKE, POND OR RESERVOIR	
STREAM (INTERMITTENT)		PORT OF ENTRY		PORT OF ENTRY		STREAM (INTERMITTENT)	
DRAINAGE DITCH		PUBLIC ACCESS POINT		PUBLIC ACCESS POINT		DRAINAGE DITCH	
WETLAND		MN STATE COLLEGE AND UNIVERSITY SYSTEM (MNSCU)		MN STATE COLLEGE AND UNIVERSITY SYSTEM (MNSCU)		WETLAND	
ISLAND OR LAND MONUMENT		UNIVERSITY OF MN SYSTEM		UNIVERSITY OF MN SYSTEM		ISLAND OR LAND MONUMENT	
REGIONAL WATERSHED		FAIRGROUNDS		FAIRGROUNDS		REGIONAL WATERSHED	
		STATE HISTORICAL MARKER		STATE HISTORICAL MARKER			
		HISTORIC DISTRICT		HISTORIC DISTRICT			
		HISTORIC SITE		HISTORIC SITE			
		MONUMENT		MONUMENT			



Population (U.S. Census 2010): 280



To request information from this document in an alternative format, call 651-366-4718 or 1-800-657-3774 (Greater Minnesota); 711 or 1-800-627-3529 (Minnesota Relay). You may also send an e-mail to ADarequest.dot@state.mn.us. (Please request at least one week in advance.)