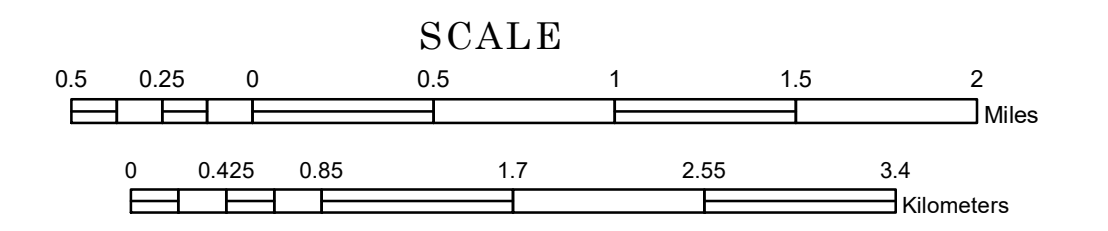


TOWNSHIP OF GREAT SCOTT

PREPARED BY THE
MINNESOTA DEPARTMENT OF TRANSPORTATION
OFFICE OF TRANSPORTATION SYSTEM MANAGEMENT

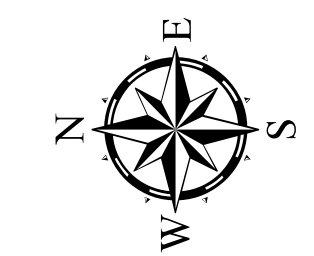
IN COOPERATION WITH
U.S. DEPARTMENT OF TRANSPORTATION
FEDERAL HIGHWAY ADMINISTRATION



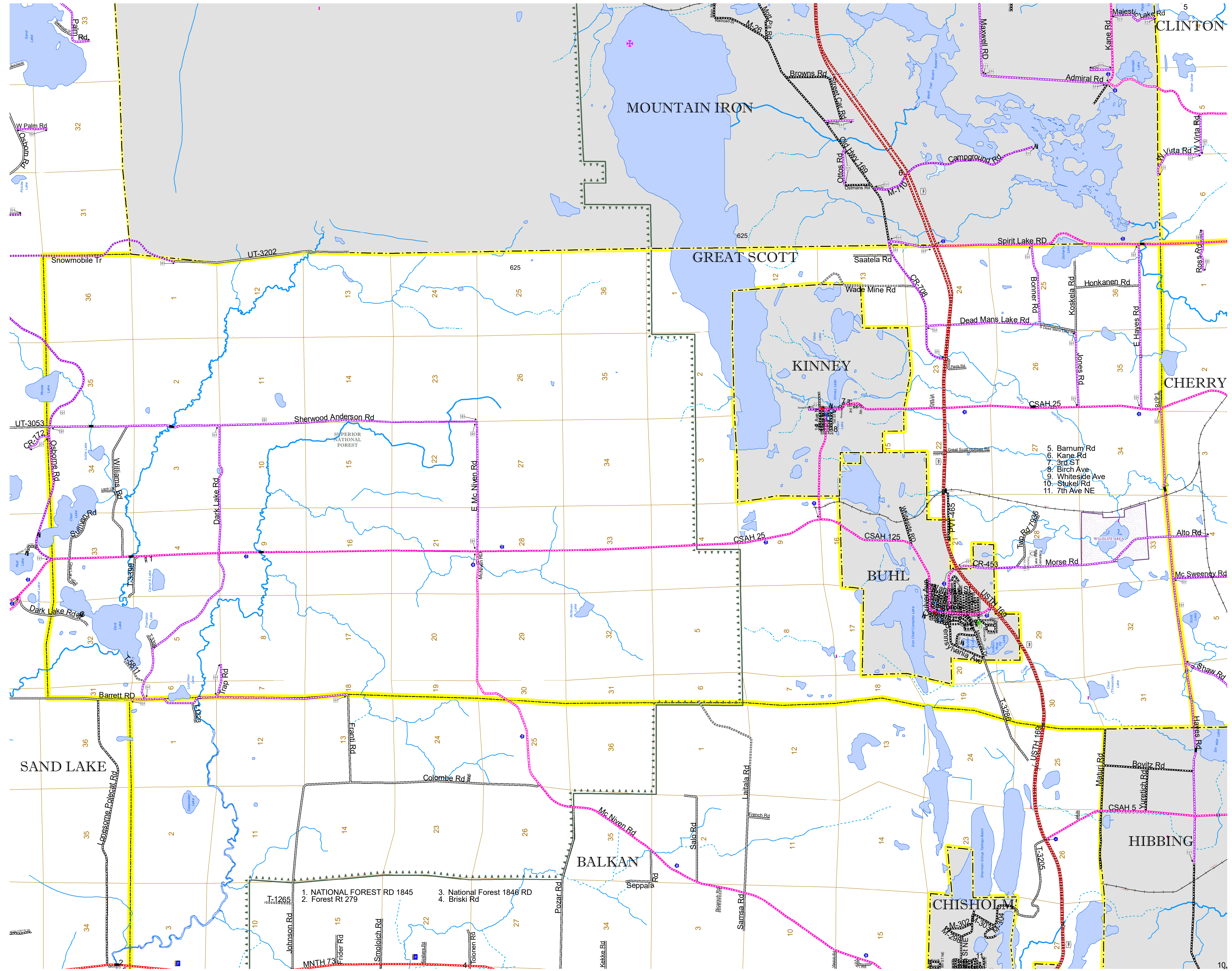
1 in = 2,800 ft

2022

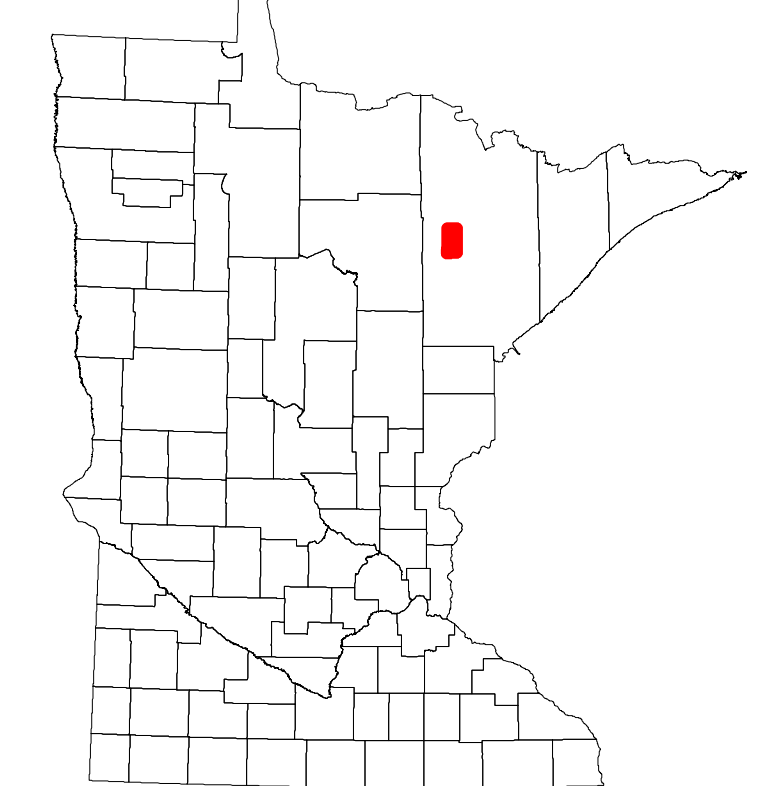
Projection:
Transverse Mercator
NAD 1986
UTM Zone 15



North American Datum
of 1986



ROAD AND ROADWAY FEATURES		BOUNDARY FEATURES	
INTERSTATE	CONCRETE	TRIBAL LAND	STATE OF MINNESOTA
US HIGHWAY	BITUMINOUS	STATE OF MINNESOTA	COUNTY
MN HIGHWAY	GRAVEL	COUNTY	MUNICIPALITY
COUNTY STATE AID HIGHWAY	DIRT/UNIMPROVED	MUNICIPALITY	UNINCORPORATED COMMUNITY
COUNTY ROAD	DIRT/UNIMPROVED	UNINCORPORATED COMMUNITY	CIVIL TOWNSHIP
TOWNSHIP ROAD	OTHER	CIVIL TOWNSHIP	CONGRESSIONAL TOWNSHIP SECTION
UNORGANIZED TERRITORY ROAD	UNKNOWN	CONGRESSIONAL TOWNSHIP SECTION	MILITARY
OTHER ROADS	RAMP OR CONNECTOR	MILITARY	VOYAGEURS NATIONAL PARK
Municipal	INTERSTATE EXIT	VOYAGEURS NATIONAL PARK	BOUNDARY WATERS CANOE AREA WILDERNESS
Private	AVIATION FEATURES	BOUNDARY WATERS CANOE AREA WILDERNESS	STATE PARK
National Monument	COMMERCIAL AIRPORT	STATE PARK	NATIONAL FOREST
National Park	GENERAL AIRPORT	NATIONAL FOREST	NATIONAL AND STATE FOREST
National Wildlife Refuge	AIRSTRIP	NATIONAL AND STATE FOREST	STATE FOREST
State Park	SEAPLANE	STATE FOREST	NATIONAL TRAIL
Preserve	AIRPORT RUNWAY	NATIONAL TRAIL	WILDLIFE REFUGE AREA
		WILDLIFE REFUGE AREA	WILDLIFE MANAGEMENT AREA
		WILDLIFE MANAGEMENT AREA	HYDROLOGIC FEATURES
		HYDROLOGIC FEATURES	RIVER OR STREAM (PERMANENT)
		RIVER OR STREAM (PERMANENT)	LAKE, POND OR RESERVOIR
		LAKE, POND OR RESERVOIR	STREAM (INTERMITTENT)
		STREAM (INTERMITTENT)	DRAINAGE DITCH
		DRAINAGE DITCH	WETLAND
		WETLAND	ISLAND OR LAND
		ISLAND OR LAND	REGIONAL WATERSHED
		REGIONAL WATERSHED	



Population (U.S. Census 2010): 561

To request information from this document in an alternative format, call 651-366-4718 or 1-800-657-3774 (Greater Minnesota); 711 or 1-800-627-3529 (Minnesota Relay). You may also send an e-mail to ADRequest.dot@state.mn.us. (Please request at least one week in advance.)