

TOWNSHIP OF PARNELL

PREPARED BY THE
MINNESOTA DEPARTMENT OF TRANSPORTATION
OFFICE OF TRANSPORTATION SYSTEM MANAGEMENT

IN COOPERATION WITH
U.S. DEPARTMENT OF TRANSPORTATION
FEDERAL HIGHWAY ADMINISTRATION

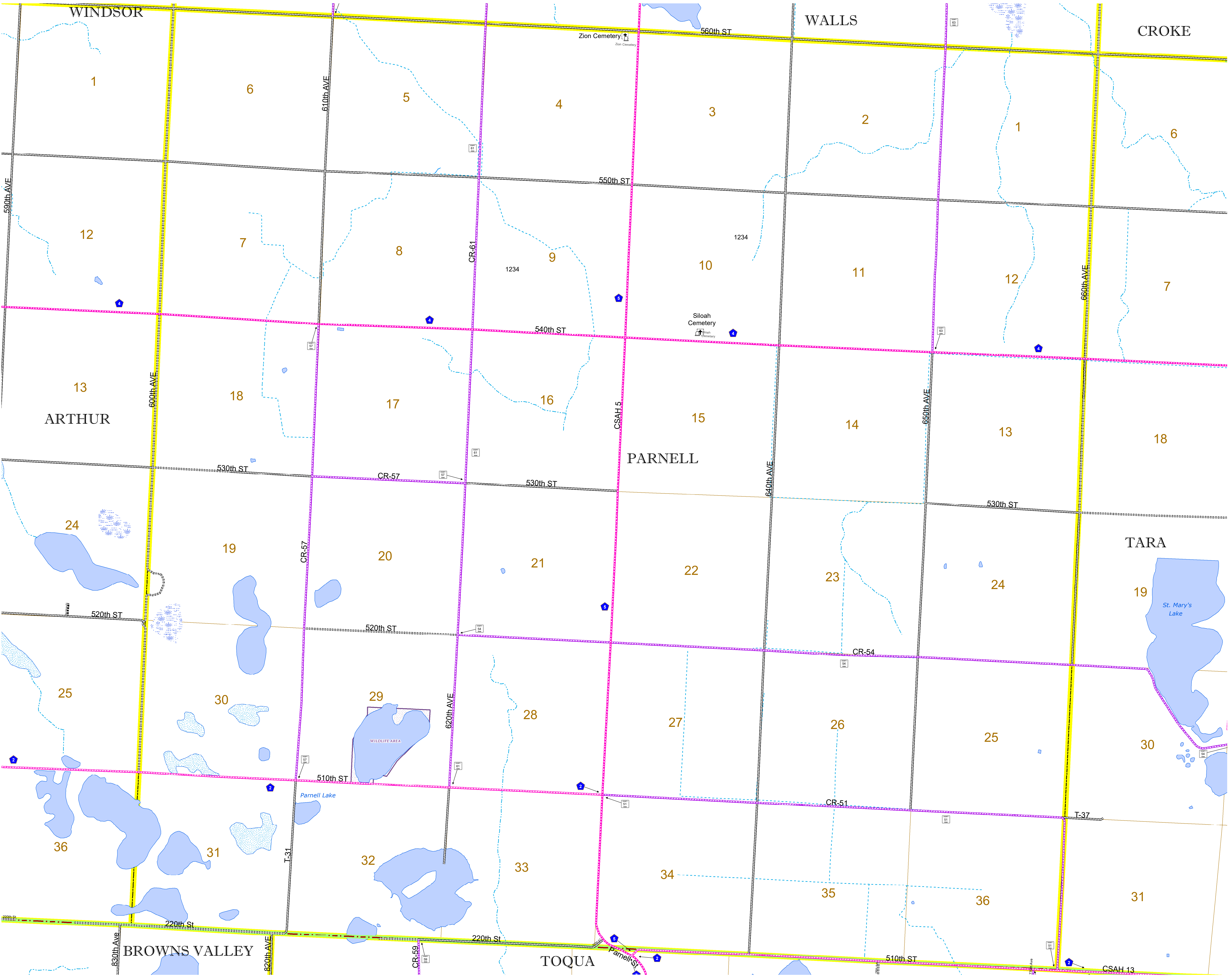


2022

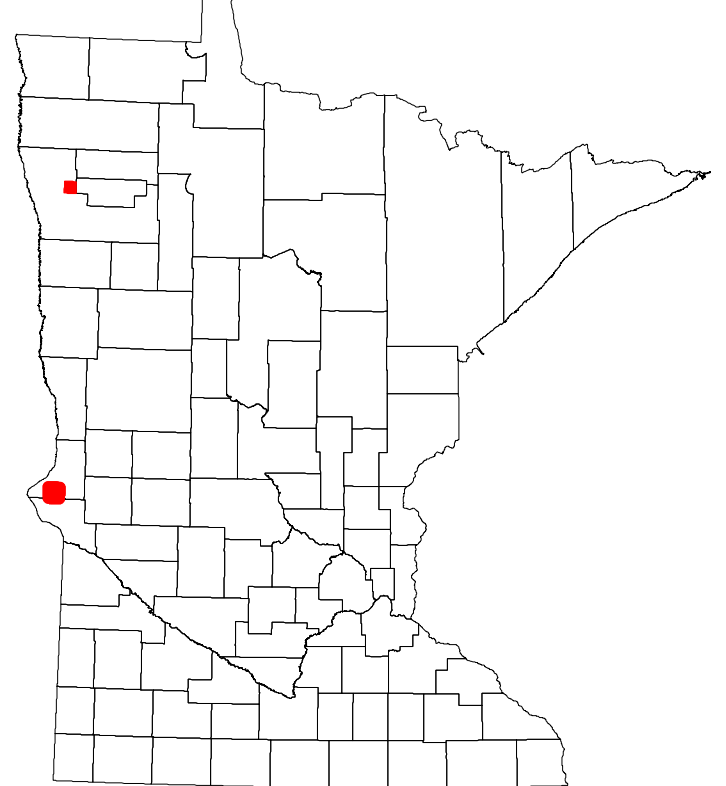
Projection:
Transverse Mercator
NAD 1986
UTM Zone 15



North American Datum
of 1986



ROAD AND ROADWAY FEATURES		AVIATION FEATURES	
INTERSTATE	CONCRETE	COMMERCIAL AIRPORT	GENERAL AIRPORT
US HIGHWAY	BITUMINOUS	AIRSTRIP	AIRSTRIP
MN HIGHWAY	GRAVEL	SEAPLANE	SEAPLANE
COUNTY STATE AID HIGHWAY	DIRT/UNIMPROVED	AIRPORT RUNWAY	AIRPORT RUNWAY
COUNTY ROAD	OTHER		
TOWNSHIP ROAD	UNKNOWN		
UNORGANIZED TERRITORY ROAD			
OTHER ROADS			
Municipal	RAMP OR CONNECTOR		
Private	INTERSTATE EXIT		
National Monument	GREAT RIVER ROAD		
National Park			
National Wildlife			
State Park			
Preserve			
RAILROAD AND RAILWAY FEATURES		BOUNDARY FEATURES	
EMPIRE BUILDER STATION (AMTRAK)	TRIBAL LAND	STATE OF MINNESOTA	COUNTY
NORTHSTAR STATION (COMPUTER)	STATE OF MINNESOTA	MUNICIPALITY	MUNICIPALITY
LIGHT RAIL		UNORGANIZED TERRITORY	FEDERAL ADJUSTED URBAN AREA (2014)
BLUE LINE		CIVIL TOWNSHIP	CIVIL TOWNSHIP
GREEN LINE		CONGRESSIONAL TOWNSHIP	SECTION
		MILITARY	VOYAGEURS NATIONAL PARK
			BOUNDARY WATERS CANOE AREA WILDERNESS
			STATE PARK
			REGIONAL PARK
			NATIONAL FOREST
			NATIONAL AND STATE FOREST
			STATE FOREST
			WILDLIFE REFUGUE AREA
			WILDLIFE MANAGEMENT AREA
			HYDROLOGIC FEATURES
			RIVER OR STREAM (PERMANENT)
			LAKE, POND OR RESERVOIR
			STREAM (INTERMITTENT)
			DRAINAGE DITCH
			WETLAND
			ISLAND OR LAND
			REGIONAL WATERSHED
CITY CENTERS			
STATE CAPITAL	CITY CENTER		
COUNTY SEAT	UNINCORPORATED COMMUNITY		
PUBLIC SERVICE FEATURES			
MNDOT OFFICE			
MNDOT TRUCK STATION			
HIGHWAY PATROL DISTRICT OFFICE			
STATE TRAVEL INFORMATION CENTER			
REST AREA (FULL SERVICE)			
REST AREA (VAULT TOILET)			
WAYSIDE (VAULT OR PIT TOILET)			
PARK AND RIDE LOT			
PORT OF ENTRY			
PUBLIC ACCESS POINT			
MN STATE COLLEGE AND UNIVERSITY SYSTEM (MNSCU)			
UNIVERSITY OF MN SYSTEM			
FAIRGROUNDS			
CULTURAL FEATURES			
STATE HISTORICAL MARKER			
HISTORIC DISTRICT			
HISTORIC SITE			
MONUMENT			



Population (U.S. Census 2010): 60

To request information from this document in an alternative format, call 651-366-4718 or 1-800-657-3774 (Greater Minnesota); 711 or 1-800-627-3529 (Minnesota Relay). You may also send an e-mail to ADARrequest.dot@state.mn.us. (Please request at least one week in advance.)