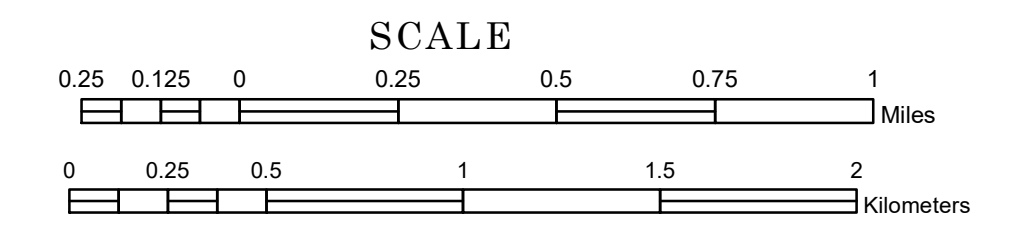


# TOWNSHIP OF WALLS

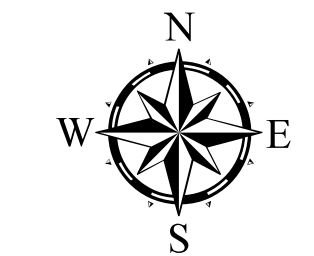
PREPARED BY THE  
MINNESOTA DEPARTMENT OF TRANSPORTATION  
OFFICE OF TRANSPORTATION SYSTEM MANAGEMENT

IN COOPERATION WITH  
U.S. DEPARTMENT OF TRANSPORTATION  
FEDERAL HIGHWAY ADMINISTRATION

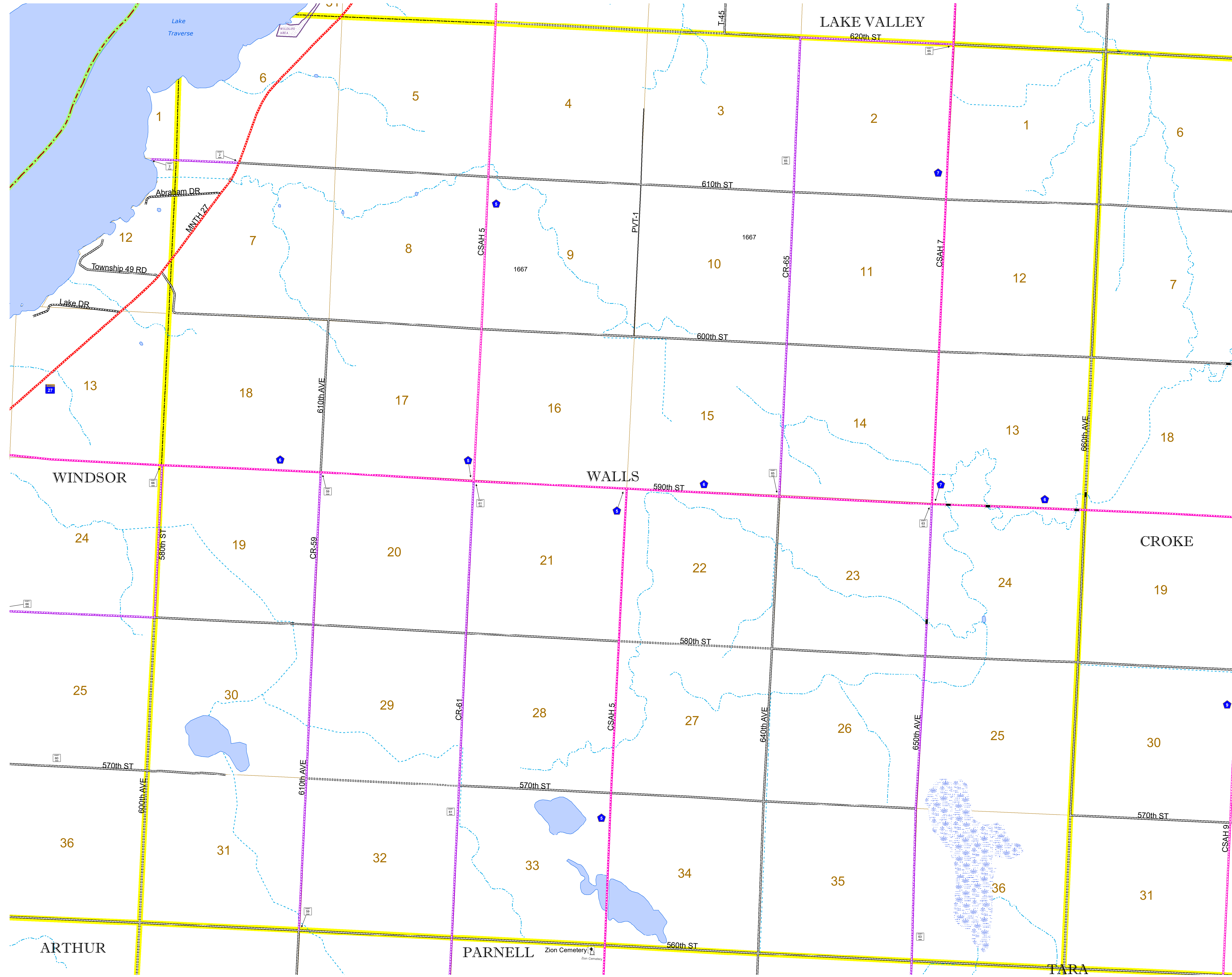


2022

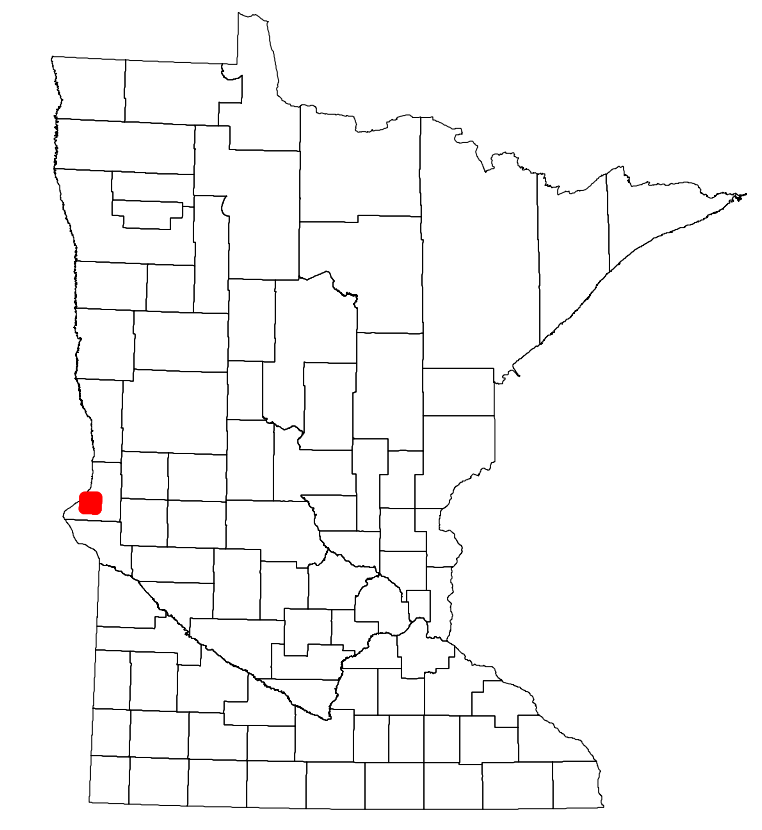
Projection:  
Transverse Mercator  
NAD 1986  
UTM Zone 15



North American Datum  
of 1986



ROAD AND ROADWAY FEATURES		BOUNDARY FEATURES	
INTERSTATE	CONCRETE	TRIAL LAND	TRIBAL LAND
US HIGHWAY	BITUMINOUS	STATE OF MINNESOTA	COUNTY
MN HIGHWAY	GRAVEL	MUNICIPALITY	MUNICIPALITY
COUNTY STATE AID HIGHWAY	DIRT/UNIMPROVED	UNORGANIZED TERRITORY	UNORGANIZED TERRITORY
COUNTY ROAD	OTHER	FEDERAL ADJUSTED URBAN AREA (2014)	CIVIL TOWNSHIP
TOWNSHIP ROAD	UNKNOWN	CONGRESSIONAL TOWNSHIP	SECTION
UNORGANIZED TERRITORY ROAD		MILITARY	MILITARY
OTHER ROADS		VOYAGEURS NATIONAL PARK	BOUNDRARY WATERS CANOE AREA WILDERNESS
Municipal	RAMP OR CONNECTOR	STATE PARK	STATE PARK
Private	INTERSTATE EXT.	NATIONAL FOREST	NATIONAL FOREST
National Monument	AVIATION FEATURES	NATIONAL AND STATE FOREST	NATIONAL AND STATE FOREST
National Wildlife Refuge	COMMERCIAL AIRPORT	STATE FOREST	STATE FOREST
National Forest	GENERAL AIRPORT	WILDLIFE REFUGE AREA	WILDLIFE REFUGE AREA
State Park	AIRSTRIP	WILDLIFE MANAGEMENT AREA	WILDLIFE MANAGEMENT AREA
Preserve	SEAPLANE	HYDROLOGIC FEATURES	HYDROLOGIC FEATURES
	AIRPORT RUNWAY	RIVER OR STREAM (PERMANENT)	RIVER OR STREAM (PERMANENT)
		LAKE, POND OR RESERVOIR	LAKE, POND OR RESERVOIR
		STREAM (INTERMITTENT)	STREAM (INTERMITTENT)
		DRAINAGE DITCH	DRAINAGE DITCH
		WETLAND	WETLAND
		ISLAND OR LAND	ISLAND OR LAND
		REGIONAL WATERSHED	REGIONAL WATERSHED



Population (U.S. Census 2010): 65

To request information from this document in an alternative format, call 651-366-4718 or 1-800-657-3774 (Greater Minnesota); 711 or 1-800-627-3529 (Minnesota Relay). You may also send an e-mail to ADRequest.dot@state.mn.us. (Please request at least one week in advance.)