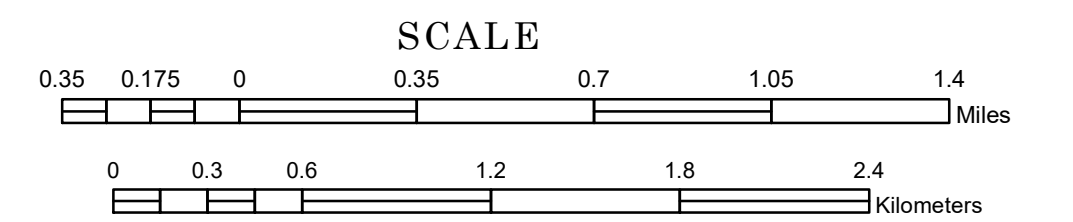


TOWNSHIP OF ZUMBRO

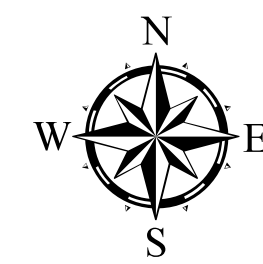
PREPARED BY THE
MINNESOTA DEPARTMENT OF TRANSPORTATION
OFFICE OF TRANSPORTATION SYSTEM MANAGEMENT

IN COOPERATION WITH
U.S. DEPARTMENT OF TRANSPORTATION
FEDERAL HIGHWAY ADMINISTRATION



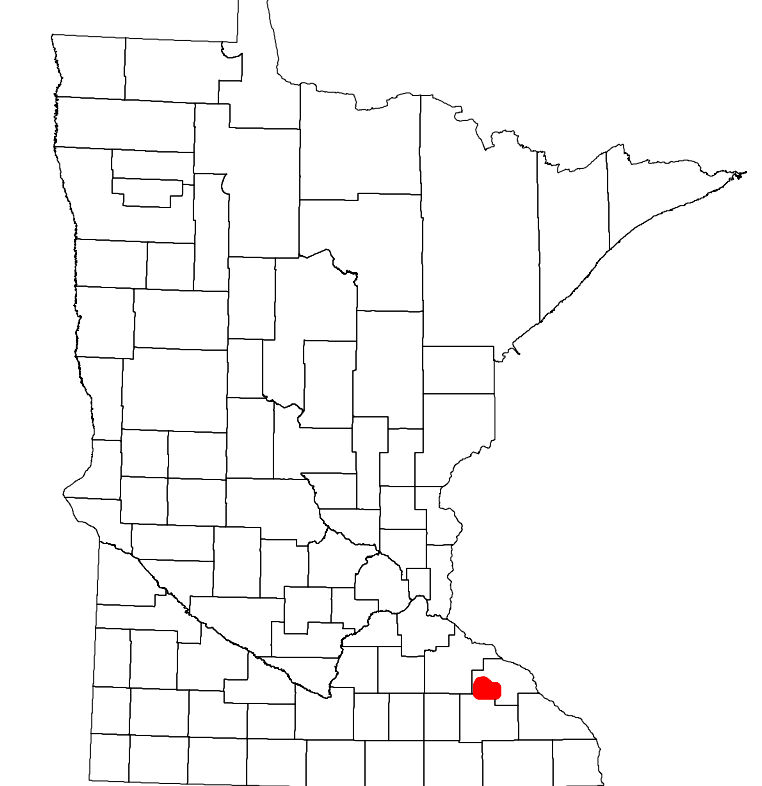
1 in = 2,000 ft
2022

Projection:
Transverse Mercator
NAD 1986
UTM Zone 15

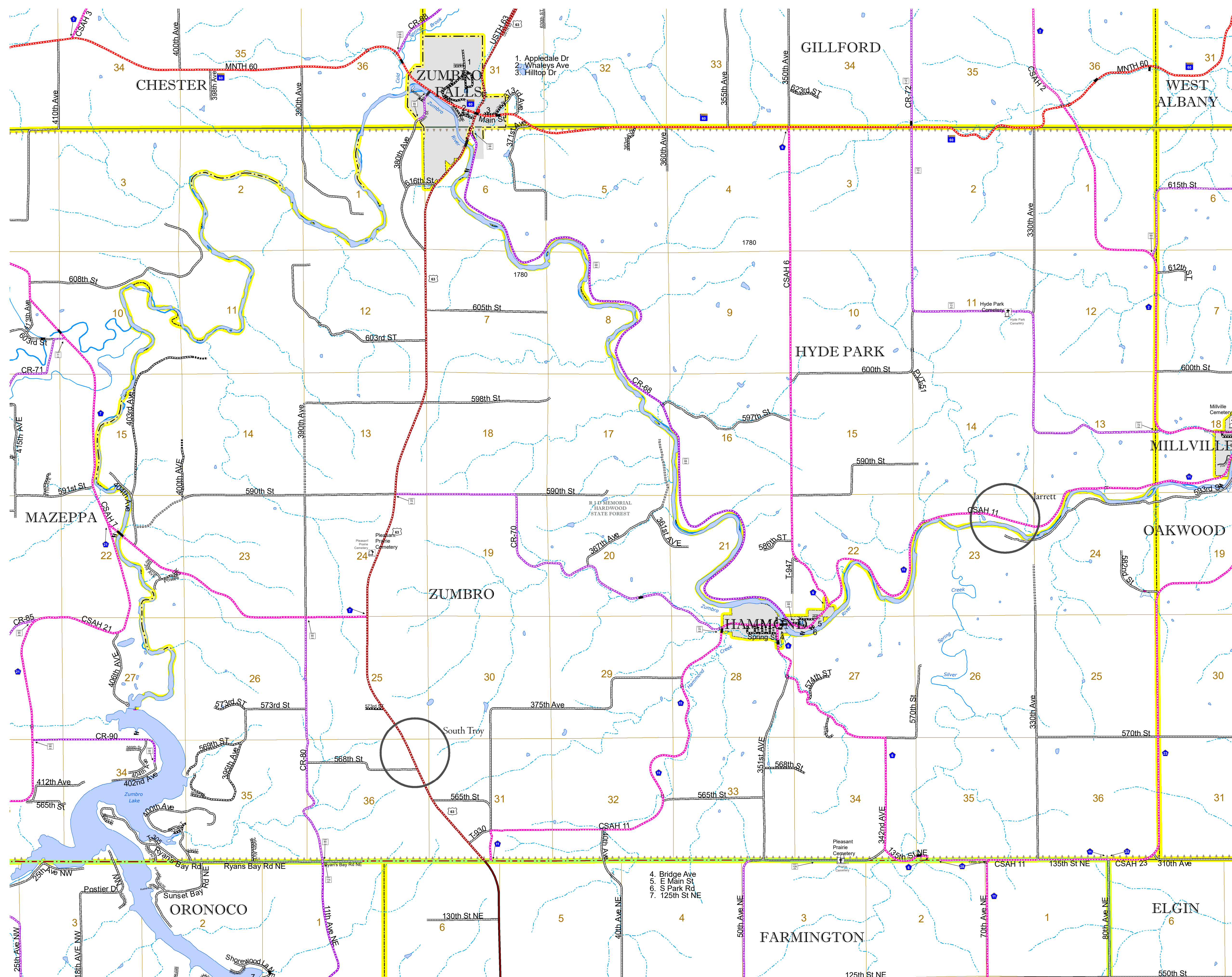


North American Datum
of 1986

ROAD AND ROADWAY FEATURES		BOUNDARY FEATURES	
INTERSTATE	CONCRETE	TRIBAL LAND	STATE OF MINNESOTA
US HIGHWAY	BITUMINOUS	STATE OF MINNESOTA	COUNTY
MN HIGHWAY	GRAVEL	COUNTY	MUNICIPALITY
COUNTY STATE AID HIGHWAY	DIRT/UNIMPROVED	MUNICIPALITY	UNINCORPORATED TOWNSHIP
COUNTY ROAD	OTHER	UNINCORPORATED TOWNSHIP	CIVIL TOWNSHIP
TOWNSHIP ROAD	UNKNOWN	CIVIL TOWNSHIP	CONGRESSIONAL COMMUNITY
UNORGANIZED TERRITORY ROAD	RAMP OR CONNECTOR	CONGRESSIONAL COMMUNITY	SECTION
OTHER ROADS	INTERSTATE EXIT	SECTION	MILITARY
Municipal	GENERAL AIRPORT	MILITARY	VOYAGEURS NATIONAL PARK
Private	AIRSTRIP	VOYAGEURS NATIONAL PARK	BOUNDARY WATERS CANOE AREA WILDERNESS
National Monument	SEAPLANE	BOUNDARY WATERS CANOE AREA WILDERNESS	STATE PARK
State Forest	AIRPORT RUNWAY	STATE PARK	REGIONAL PARK
National Wildlife Refuge		REGIONAL PARK	NATIONAL FOREST
State Park		NATIONAL FOREST	NATIONAL AND STATE FOREST
Preserve		NATIONAL AND STATE FOREST	STATE FOREST
		STATE FOREST	NATIONAL TRAIL
		NATIONAL TRAIL	WILDLIFE REFUGUE AREA
		WILDLIFE REFUGUE AREA	WILDLIFE MANAGEMENT AREA
		WILDLIFE MANAGEMENT AREA	HYDROLOGICAL FEATURES
		HYDROLOGICAL FEATURES	RIVER OR STREAM (PERENNIAL)
		RIVER OR STREAM (PERENNIAL)	LAKE, POND OR RESERVOIR
		LAKE, POND OR RESERVOIR	STREAM (INTERMITTENT)
		STREAM (INTERMITTENT)	DRAINAGE DITCH
		DRAINAGE DITCH	WETLAND
		WETLAND	ISLAND OR LAND
		ISLAND OR LAND	REGIONAL WATERSHED
		REGIONAL WATERSHED	



Population (U.S. Census 2010): 722



To request information from this document in an alternative format, call 651-366-4718 or 1-800-657-3774 (Greater Minnesota); 711 or 1-800-627-3529 (Minnesota Relay). You may also send an e-mail to ADArequest.dot@state.mn.us. (Please request at least one week in advance.)