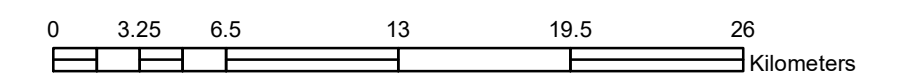
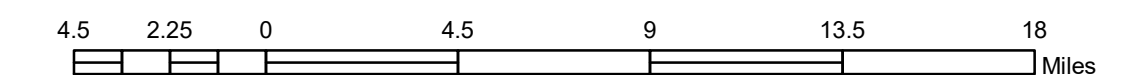


GENERAL HIGHWAY MAP RED LAKE MINNESOTA

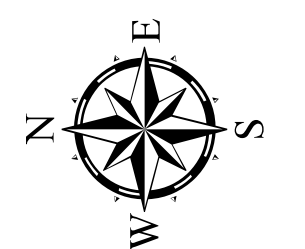
PREPARED BY THE
MINNESOTA DEPARTMENT OF TRANSPORTATION
OFFICE OF TRANSPORTATION SYSTEM MANAGEMENT

IN COOPERATION WITH
U.S. DEPARTMENT OF TRANSPORTATION
FEDERAL HIGHWAY ADMINISTRATION

SCALE

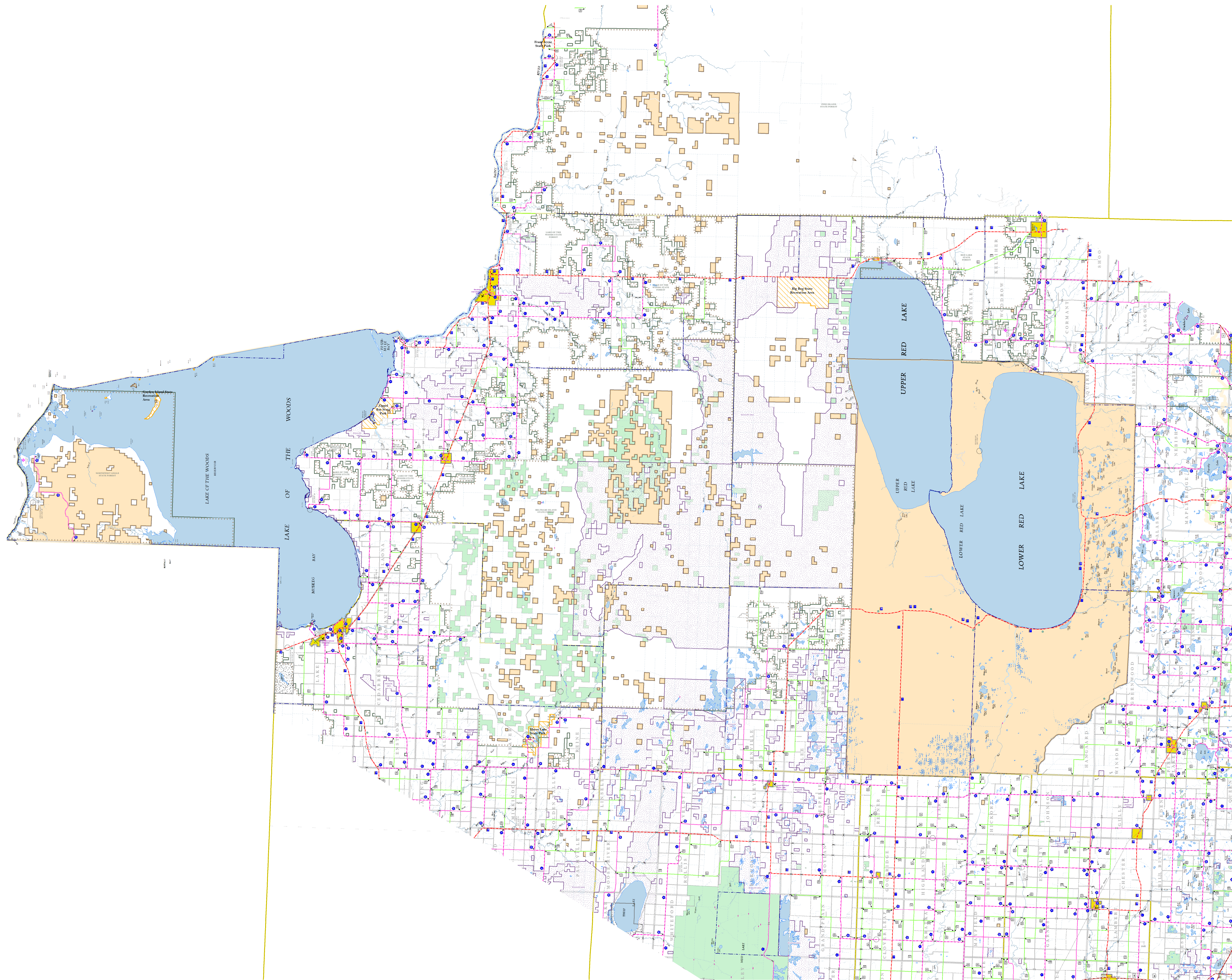


1 in = 23,750 ft
2016



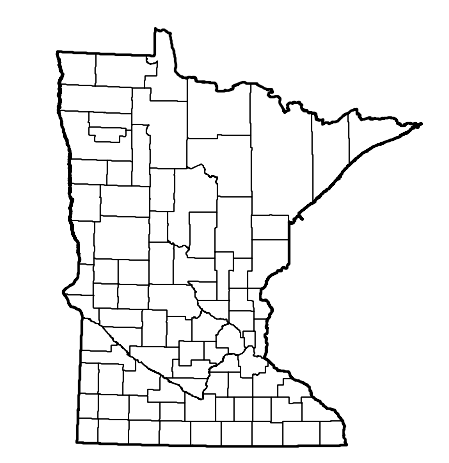
North American Datum
of 1986

Projection:
Transverse Mercator
NAD 1986
UTM Zone 15



ROAD AND ROADWAY FEATURES		BOUNDARY FEATURES	
INTERSTATE	CONCRETE	TRIBAL LAND	STATE OF MINNESOTA
US HIGHWAY	BITUMINOUS	COUNTY	MUNICIPALITY
MN HIGHWAY	GRAVEL	MUNICIPALITY	MUNICIPALITY
COUNTY STATE AID HIGHWAY	DIRT/UNIMPROVED	UNORGANIZED TERRITORY	FEDERAL ADJUSTED URBAN AREA (2014)
COUNTY ROAD	OTHER	CIVIL TOWNSHIP	CONGRESSIONAL TOWNSHIP
TOWNSHIP ROAD	UNKNOWN	SECTION	MILITARY
UNORGANIZED TERRITORY ROAD		VOYAGEURS NATIONAL PARK	BOUNDARY WATERS CANOE AREA WILDERNESS
OTHER ROADS	RAMP OR CONNECTOR	STATE PARK	REGIONAL PARK
Municipal	INTERSTATE EXIT	NATIONAL FOREST	NATIONAL AND STATE FOREST
Private	GREAT RIVER ROAD	STATE FOREST	NATIONAL TRAIL
National Monument		NATIONAL TRAIL	WILDLIFE REFUGE AREA
National Park		WILDLIFE REFUGED AREA	WILDLIFE MANAGEMENT AREA
National Wildlife Refuge		WILDLIFE MANAGEMENT AREA	HYDROLOGIC FEATURES
National Forest		RIVER OR STREAM (PERENNIAL)	LAKE, POND OR RESERVOIR
State Park		LAKE, POND OR RESERVOIR	STREAM (INTERMITTENT)
Passage		STREAM (INTERMITTENT)	DRAINAGE DITCH
		DRAINAGE DITCH	WETLAND
		WETLAND	ISLAND OR LAND
		ISLAND OR LAND	REGIONAL WATERSHED
		REGIONAL WATERSHED	

Outline Map of Minnesota showing
location of the County within the state.



Outline Map of the County.

Area of this County
Land Area
2010 Total County Population



To request information from this document in an alternative format, call 651-366-4718 or 1-800-657-3774 (Greater Minnesota); 711 or 1-800-627-3529 (Minnesota Relay). You may also send an e-mail to ADRequest.dot@state.mn.us. (Please request at least one week in advance.)

NOTE: FOR DETAIL OF COUNTY STATE AID HIGHWAYS AND COUNTY ROADS IN INCORPORATED PLACE, SEE MAPS OF MUNICIPALITIES.