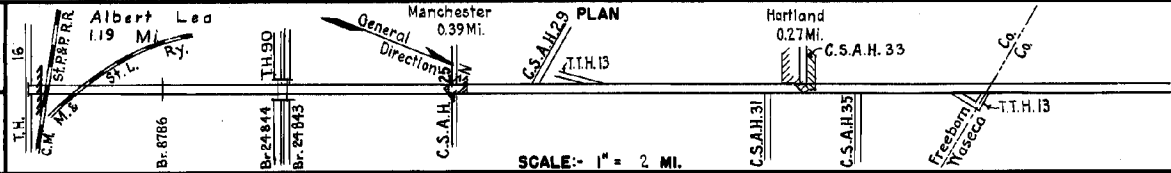


PREPARED BY  
HIGHWAY PLANNING SURVEY  
IN COOPERATION WITH  
U. S. PUBLIC ROADS ADMINISTRATION

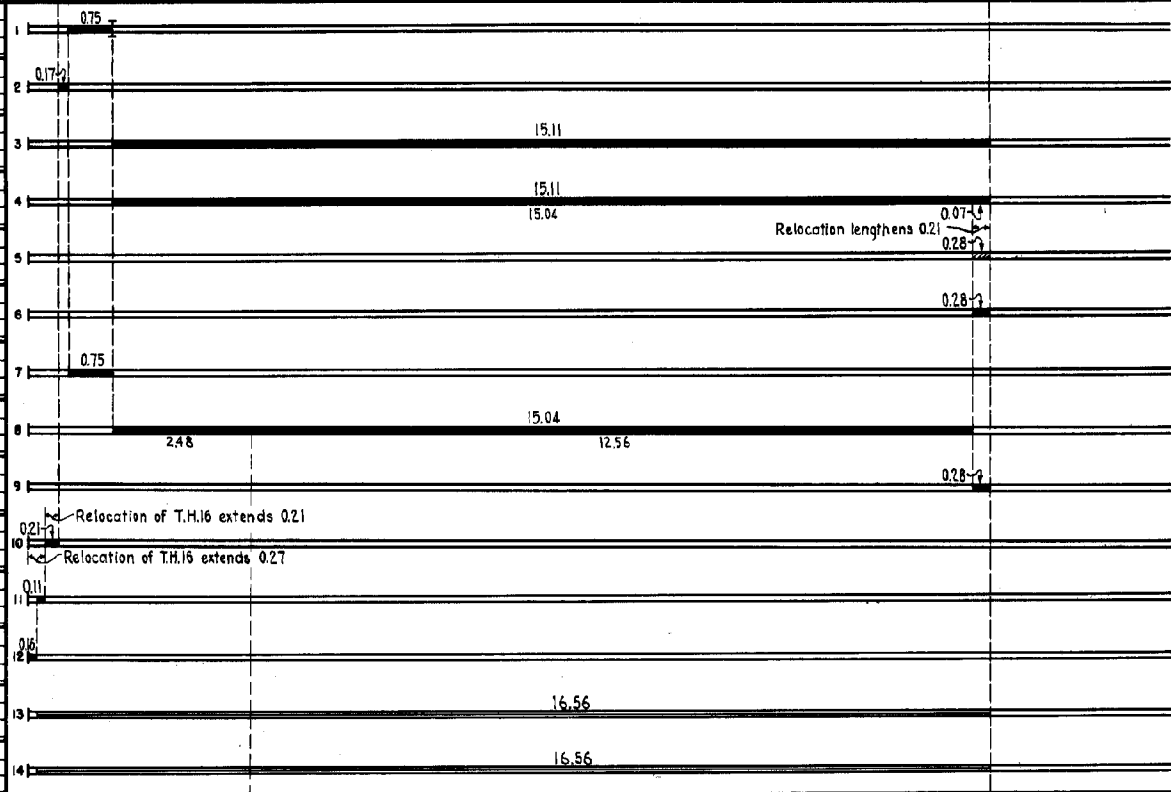
STATE OF MINNESOTA  
DEPARTMENT OF HIGHWAYS  
ROAD LIFE STUDIES  
CONSTRUCTION PROJECT LOG RECORD

CONTROL SECTION 2401  
TRUNK HIGHWAY 13  
COUNTY Freeborn  
DISTRICT 6B

LIMITS: Jct. T.H. 16 in Albert Lea - N. Co. Line



YEAR BUILT	PROJECT N <sup>o</sup>	DESCRIPTION			CODE N <sup>o</sup>
		TYPE	WIDTH	THICKNESS	
		Gravel			No Record of Const.
		Br. 1352	24'		32" Conc. Arch.
1920	13-13-3	Tar (Concrete Base)	30'		
1923	13-13-02A	Grading	30'		
1924	13-13-02A	Gravel	24'	2 1/2"	1200 C.Y./Mile.
1925	13-13-27A	Grading	30'		
1926	13-13-27A	Gravel	24'	3 1/2"	1600 C.Y./Mile.
1932		Oil Tr. Gravel	V.M.		12099 Gal./Mile. Maint. Dept.
1932	(1) 13-13-02A	Oil Tr. Gravel	22'	1 1/2"	12099 Gal./Mile. Maint. Dept.
1932	(1) 13-13-27A	Oil Tr. Gravel	22'	1 1/2"	12099 Gal./Mile. Maint. Dept.
		Tar (Concrete Base)	30'		No Record of Const. Becomes Part of T.H. 13 in 1933.
		Tar Tr. Gravel			No Record of Const. Taken over from City in 1936.
1938	(2) 13-9-45-68	Concrete	28'	9-7-9	
M	1940 A.F.E. 15	Bit Retreat.			SG 23, 1237 Gal./Mi. Grav. 59 C.Y./Mi. Maint. Dept.
M	1941 A.F.E. 7	Bit Retreat.	22'		SG 2, 2739 Gal./Mi. Grav. 85 C.Y./Mi. Maint. Dept.



YEARS		TOTAL MILES	UNINCORPORATED		INCORPORATED		RURAL		URBAN	
FROM	TO		RDWY. MI.	BR. MI.	RDWY. MI.	BR. MI.	RDWY. MI.	BR. MI.	RDWY. MI.	BR. MI.
1923	1924	16.03	14.82	0.00	1.20	0.01	15.11	0.00	0.91	0.01
1925	1932	16.24	15.03	0.00	1.20	0.01	15.32	0.00	0.91	0.01
1933	1935	16.45	15.03	0.00	1.41	0.01	15.32	0.00	1.12	0.01
1936	1946	16.72	15.03	0.00	1.69	0.01	15.32	0.00	1.39	0.01
1947	1948	16.60	14.93	0.00	1.66	0.01	15.20	0.00	1.39	0.01
1949	1951	16.60	14.52	0.00	2.05	0.01	15.20	0.00	1.39	0.01
1952	1960	18.42	14.76	0.00	0.66	0.00	15.44	0.00	0.00	0.00

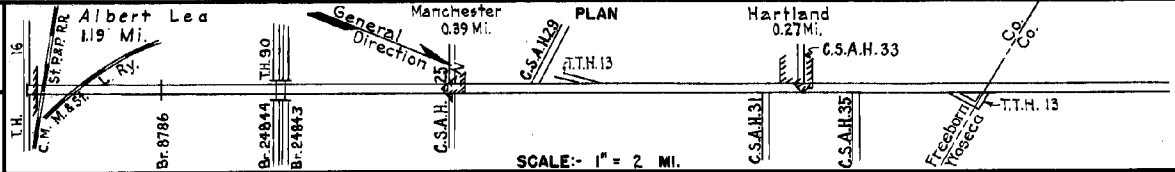
REMARKS: Layout is to scale as of 1936. Plan revised for 1952 relocation.  
 (1) This work not done under these project numbers but lies within the limits of these projects.  
 (2) This construction was done as S.P. 6-9-45-68 and is a connection alongside of overhead to connect T.H. 13 with T.H. 16.

PREPARED BY  
HIGHWAY PLANNING SURVEY  
IN COOPERATION WITH  
U.S. PUBLIC ROADS ADMINISTRATION

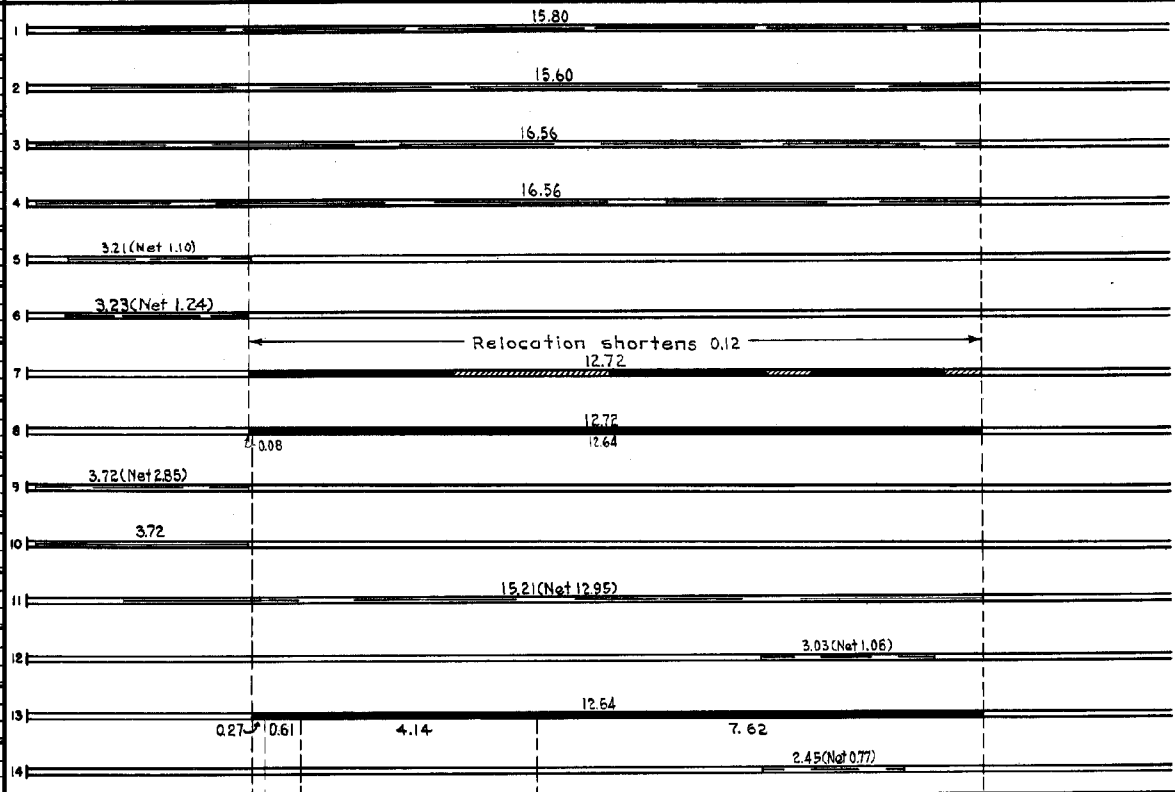
STATE OF MINNESOTA  
DEPARTMENT OF HIGHWAYS  
ROAD LIFE STUDIES  
CONSTRUCTION PROJECT LOG RECORD

CONTROL SECTION 2401  
TRUNK HIGHWAY 13  
COUNTY Freeborn  
DISTRICT 6B

LIMITS: Jct. T.H. 16 in Albert Lea - N. Co. Line



YEAR BUILT	PROJECT N <sup>o</sup>	DESCRIPTION			CODE N <sup>o</sup>
		TYPE	WIDTH	THICK-NESS	
M 1942	A.F.E. 4	Spot Treat. Bit Surf. Repair	22'		
M 1943	A.F.E. 4	Spot Treat. Bit Surf. Repair	22'		
M 1944	A.F.E. 4	Spot Treat. Bit Surf. Repair	22'		
M 1945	A.F.E. 4	Spot Treat. Bit Surf. Repair	22'		
M 1946	A.F.E. 4	Spot Treat. Bit Surf. Repair	24'		
M 1947	A.F.E. 4	Spot Treat. Bit Surf. Repair	24'		
C 1947	2401-04	Grading Stab. Gravel C46&Ext. W 108	39' 30' 2"		
C 1948	2401-07	Bit Surface Treated	26'	3/4"	
M 1948	A.F.E. 4	Spot Treat. Bit Surf. Repair	22'		
M 1949	A.F.E. 4	Spot Treat. Bit Surf. Repair	22'		
M 1950	A.F.E. 4	Spot Treat. Bit Surf. Repair	26'		
M 1951	A.F.E. 4	Spot Treat. Bit Surf. Repair	22'		
C 1951	2401-09	Sand-Grav. Sub-base Gravel Base (3) Plant Mix Bit.	32' 32' 24'	6" 3" 1 1/2"	
M 1952	A.F.E. 4	Spot Treat. Bit Surf. Repair	22'		



YEARS FROM TO	TOTAL MILES	UNINCORPORATED		INCORPORATED		RURAL		URBAN		
		RDWY. MI.	BR. MI.	RDWY. MI.	BR. MI.	RDWY. MI.	BR. MI.	RDWY. MI.	BR. MI.	
1941	15.42	4.58	0.00	0.84	0.00	15.24	0.00	0.18	0.00	
<b>SEE SHEET 4 of 4</b>										

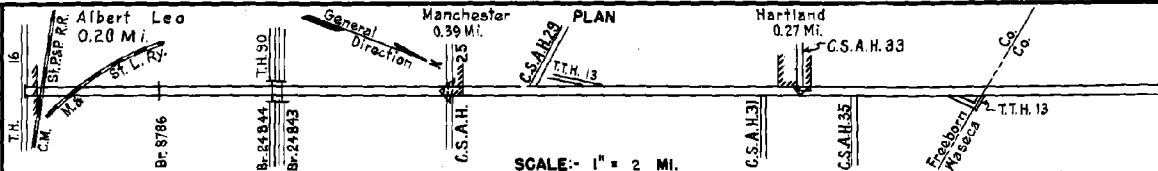
REMARKS: See Sheet N<sup>o</sup> 1  
(3) Contract not final but work substantially complete in 1951.

PREPARED BY  
HIGHWAY PLANNING SURVEY  
IN COOPERATION WITH  
U. S. PUBLIC ROADS ADMINISTRATION

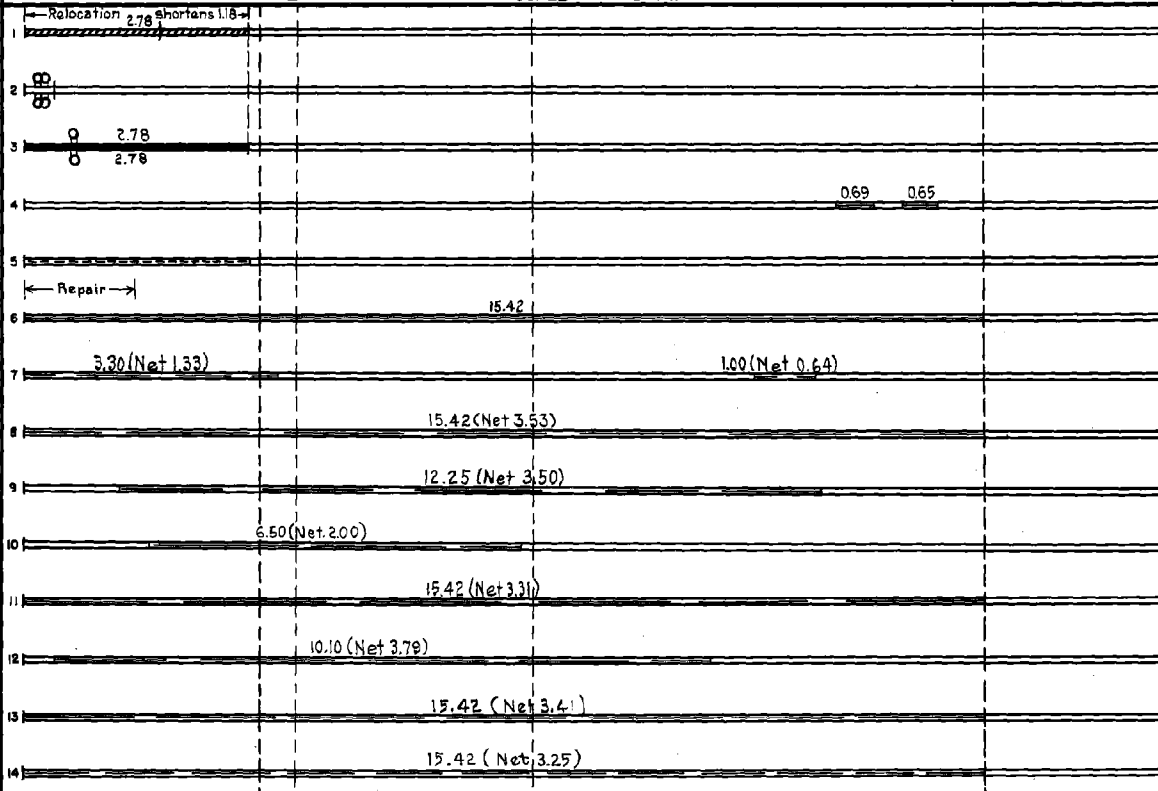
STATE OF MINNESOTA  
DEPARTMENT OF HIGHWAYS  
ROAD LIFE STUDIES  
CONSTRUCTION PROJECT LOG RECORD

CONTROL SECTION 2401  
TRUNK HIGHWAY 13  
COUNTY Freeborn  
DISTRICT 68

LIMITS: Jct T.H. 16 in Albert Lea - N. Co. Line



YEAR BUILT	PROJECT N°	DESCRIPTION			CODE N°
		TYPE	WIDTH	THICKNESS	
C	1952 2401-08	Grading Sand-Grav. Mat'l. Gravel	34'	12"	G106 D (Br. 8786)
C	2401-09	Xing Signals C&B Culvert	28'	1 1/2"	
C	2401-10	Bit. Surf. Base	30'	6"	added thickness
C	1953 2401-14	Mixed Bit. X-ing Signals	26'	1 1/2"	
M	1953 A.F.E. 604	Bit. Surf. Repair	22'		SC3, 8887 Gal. Agg. 460 C.Y.
C	1954 A.F.E. 817	Grav. Shoulders			2 Rt. & Lt.
M	1955 A.F.E. 604	Bit. Surf. Repair (0.34 Mi.)	24'		MC2 & RC2, 40084 Gal. Agg. 697 Tons & 900 C.Y.
M	A.F.E. 605	Light Bit. Seal (0.542 Mi.)	24'		
M	1956 A.F.E. 604	Spot Treat Bit. Surf. Repair	24'		MC-2, 17684 Gal. Agg. 1113 Tons
M	1957 A.F.E. 604	Spot Treat Bit. Surf. Repair	24'		MC-2, 28785 Gal. Agg. 2153 Tons
M	1959 A.F.E. 604	Spot Treat Bit. Surf. Repair	24'		MC-2, 31970 Gal. Agg. 2088 Tons
M	1960	Spot Treat Bit. Surf. Repair	24'		MC-2, 19365 Gal. Agg. 1422 Tons
M	1961	Spot Treat Bit. Surf. Repair	24'		MC-2, 19365 Gal. for Repair & 2328 Gal. for Tack. Agg. 1859 Tons
M	1962	Spot Treat Bit. Surf. Repair	24'		Rd. Mix 2117 Tons MC-2, 2668 Gal.
M	1963	Spot Treat Bit. Surf. Repair	24'		MC-2, 24182 Gal. Road Mix 1890 Tons Tack 2600 Gal.
M	1964 SF	Spot Treat Bit. Surf. Repair	24'		MC-3, 24463 Gal. Agg. 1826 Tons Tack 2300 Gal.



YEARS FROM	TOTAL MILES TO	UNINCORPORATED		INCORPORATED		RURAL		URBAN	
		RDWY. MI.	BR. MI.	RDWY. MI.	BR. MI.	RDWY. MI.	BR. MI.	RDWY. MI.	BR. MI.

REMARKS: See Sheet No. 1  
 (4) Contract not final but work substantially complete.

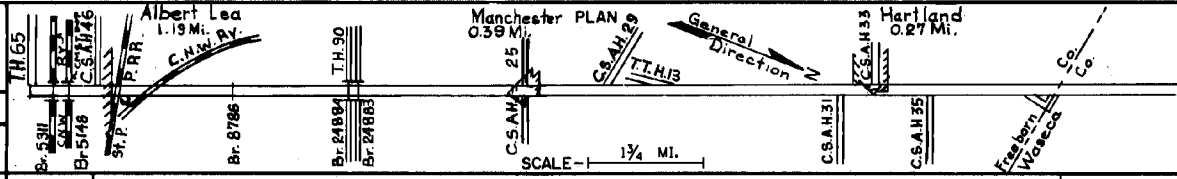


PREPARED BY  
TRANSPORTATION & TRANSIT PLANNING & PROGRAMMING DIVISION  
IN COOPERATION WITH  
U.S. DEPARTMENT OF TRANSPORTATION-BUREAU OF PUBLIC ROADS

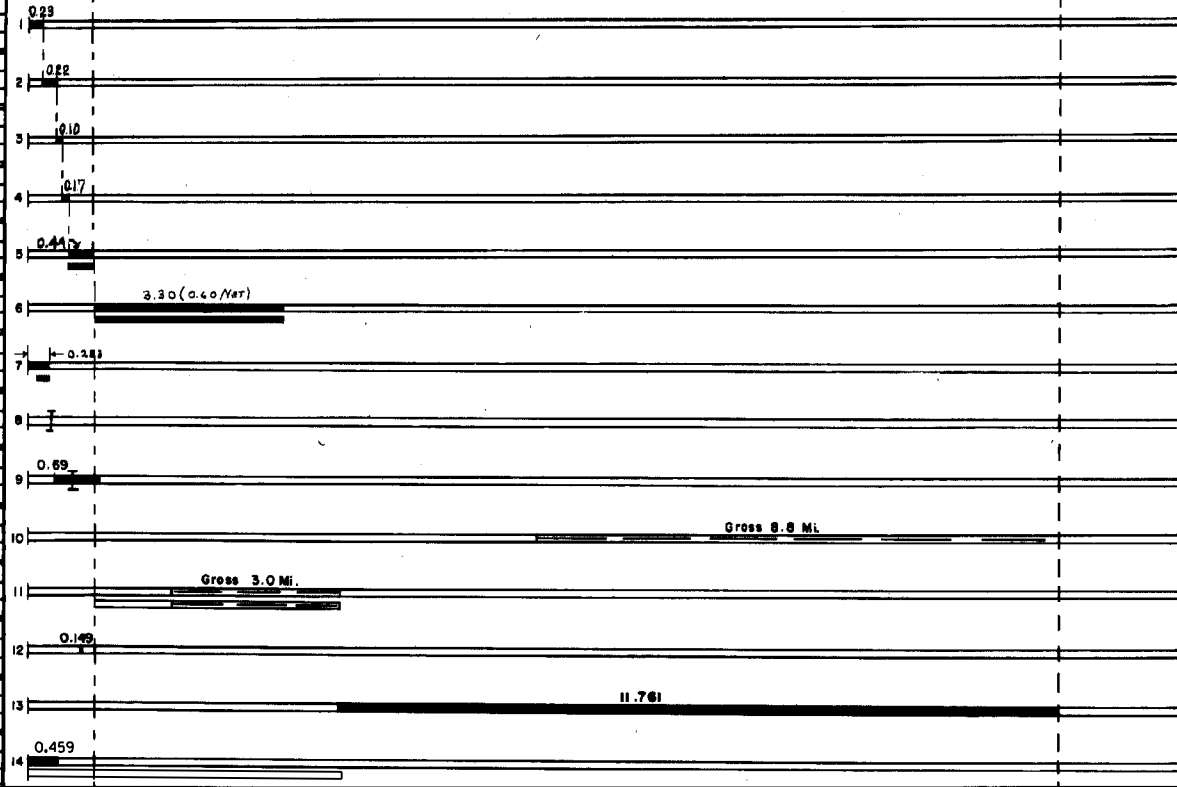
LIMITS: Jct. 65 in Albert Lea - N. Co. Line  
Ref. Pt. 000+00.000 - 015+00.569

STATE OF MINNESOTA  
DEPARTMENT OF HIGHWAYS  
ROAD LIFE STUDIES  
CONSTRUCTION PROJECT LOG RECORD

CONTROL SECTION 2401  
TRUNK HIGHWAY 13  
COUNTY Freshborn  
DISTRICT 88



YEAR BUILT	PROJECT NO.	DESCRIPTION			
		TYPE	WIDTH	THICKNESS	REMARKS
1934	16-9-45-7	Concrete	Y.W.	6"	Transferred from C.S. 2402 in 1973
1935	16-9-45-6	Concrete	30'		Transferred from C.S. 2402 in 1973
1936	16-9-45-5B	Concrete	31'		Transferred from C.S. 2402 in 1973
1936	16-9-45-2A&B	Concrete	20'	9" 7/8"	Transferred from C.S. 2402 in 1973
C 1972	2402-15	Grading			Transferred from C.S. 2402 in 1973
M 1972	2402-18	Plant Mix Bit. Var. Shoulders 3'-10'			Transferred from C.S. 2402 in 1973
M 1970	SF	Bit Spot Overlay	24'	1"	AC-1 2331 357.2 Ton MC260 Tack 4-63 GAL
C 1974	2401-23	Conc. Median CIG Bit SURFACING	6"		
M 1982	SF	Br. Painting, No. 5311			
C 1982	2401-26	Bit Surfacing Frost Heavy Repair			895 Ton Sp. 2361 Br. 24005
M 1983	SF	Spot Bit. Shoulder Repair	10'	2 1/2"	2850 Lin. Ft. - 448 Ton Total Includes CS 8101
M 1983	SF	Place 2" Bit. Wedge For Shoulder		Var.	114 Ton
M 1984	SF	Spot Bit. Overlay	40'	Var.	Sp. 2331 85 Tons Drainage Correction
C 1985	2401-28	Milling Incl. Bit. Bit. Surfacing Bit. Shoulders	44'	1 1/2"	
M 1986	2401-29	Mili & Bit. Overlay		1"	Spec. 2331 Spec. 2341



YEARS FROM	TO	TOTAL MILES	UNINCORPORATED		INCORPORATED		RURAL		URBAN	
			RDWY. MI.	BR. MI.	RDWY. MI.	BR. MI.	RDWY. MI.	BR. MI.	RDWY. MI.	BR. MI.
1973	1973	16.52	14.52	0.00	1.65	0.15	15.18	0.00	1.19	0.15
1974		16.54	14.52	0.00	1.87	0.15	15.18	0.00	1.21	0.17

REMARKS: See Sheet No 1

