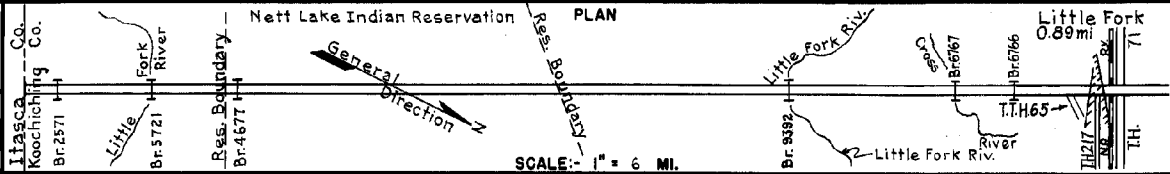


PREPARED BY
HIGHWAY PLANNING SURVEY
IN COOPERATION WITH
U. S. PUBLIC ROADS ADMINISTRATION

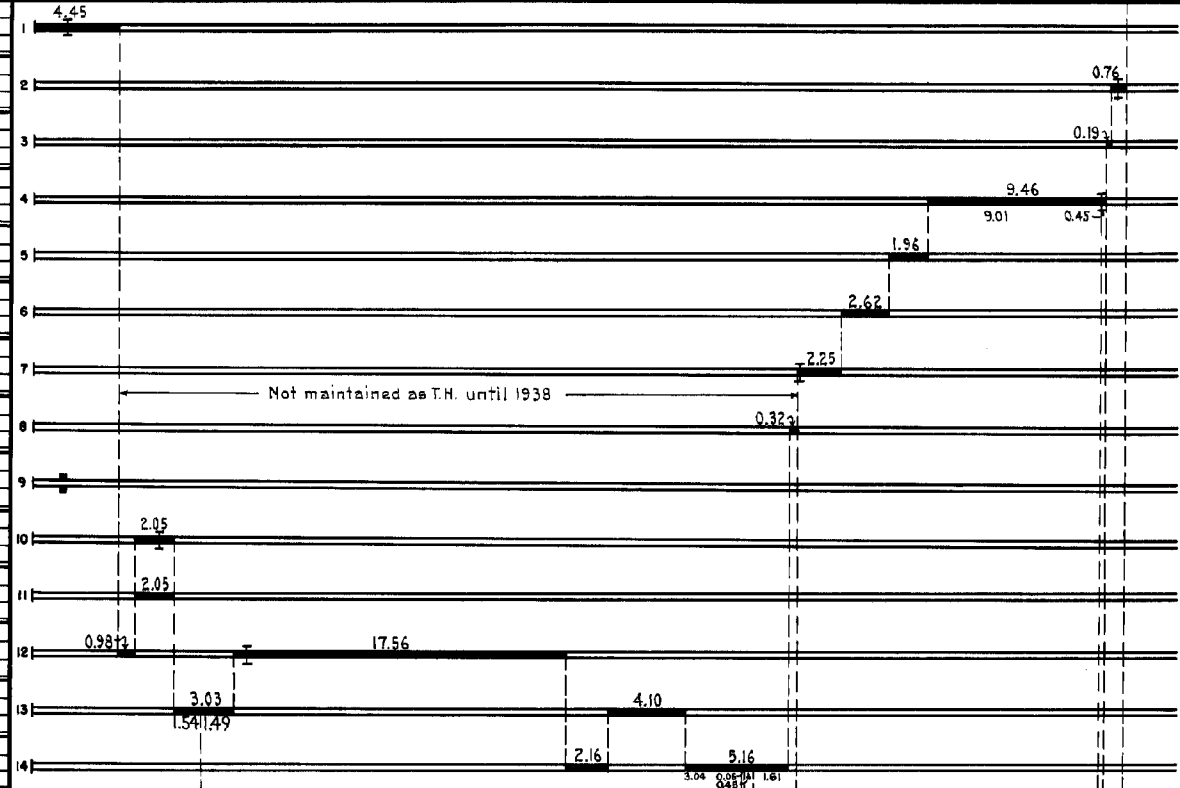
STATE OF MINNESOTA
DEPARTMENT OF HIGHWAYS
ROAD LIFE STUDIES
CONSTRUCTION PROJECT LOG RECORD

CONTROL SECTION 3609
TRUNK HIGHWAY 65
COUNTY Koochiching
DISTRICT 1B

LIMITS: S. County Line - Jct.T.H.71



YEAR BUILT	PROJECT N ^o	DESCRIPTION			CODE N ^o
		TYPE	WIDTH	THICKNESS	
		Gravel	18'3"	4"	No Record of Constr. Added in 1934.
	Br. 2571		16'		10' log Span.
		Gravel	24'3"	2"	No Record of Constr. Added in 1934.
	Br. 2276		17'		250' L.T. & H.T.
		Gravel	40'0"	2"	No Record of Constr. Added in 1934.
		Gravel	23'8"	2"	No Record of Constr. Added in 1934.
	Br. 1318		15'		290' W.P.T. & H.T.
		Gravel	19'0"	2"	No Record of Constr. Added in 1934.
		Gravel	16'7"	2"	No Record of Constr. Added in 1934.
		Gravel	21'2"	2"	No Record of Constr. Added in 1934.
	Br. 3196		17'		190' B.S. & H.T.
		Gravel	16'	2"	No Record of Constr. Added in 1934.
1934	Br. 2571	Widening.	22'		10' Log Span. Maint. Div.
1937	65-159-21-2	Grading	20'3"		
	Br. 5721		17'		370' H.T. & B.S.
1938	65-159-21-2	Gravel	24'	5"	
		Gravel	21'2"	3'-4"	No Record of Constr. Added in 1938.
	Br. 4677		18'		15' W.P.T.
		Gravel	19'3"	2'-3"	No Record of Constr. Added in 1938.
		Gravel	42'3"	2'-3"	No Record of Constr. Added in 1938.



YEARS		TOTAL MILES	UNINCORPORATED		INCORPORATED		RURAL		URBAN	
FROM	TO		RDWY. MI.	BR. MI.	RDWY. MI.	BR. MI.	RDWY. MI.	BR. MI.	RDWY. MI.	BR. MI.
1934	1937	22.01	20.14	0.04	1.73	0.10	21.87	0.14	0.00	0.00
1938	1943	57.05	55.11	0.11	1.73	0.10	56.84	0.21	0.00	0.00
1944	1950	57.40	55.46	0.11	1.73	0.10	57.19	0.21	0.00	0.00
1951	1957	57.40	55.45	0.12	1.73	0.10	57.18	0.22	0.00	0.00
1958	1962	54.11	52.57	0.21	1.28	0.05	53.85	0.26	0.00	0.00
1963		53.51	52.46	0.16	0.89	0.00	53.35	0.16	0.00	0.00

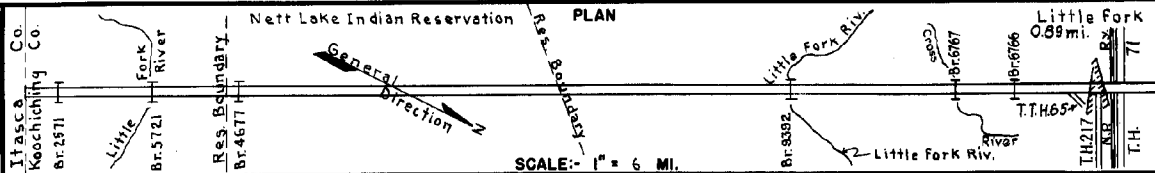
REMARKS: Layout is to scale as of 1944

PREPARED BY
HIGHWAY PLANNING SURVEY
IN COOPERATION WITH
U.S. PUBLIC ROADS ADMINISTRATION

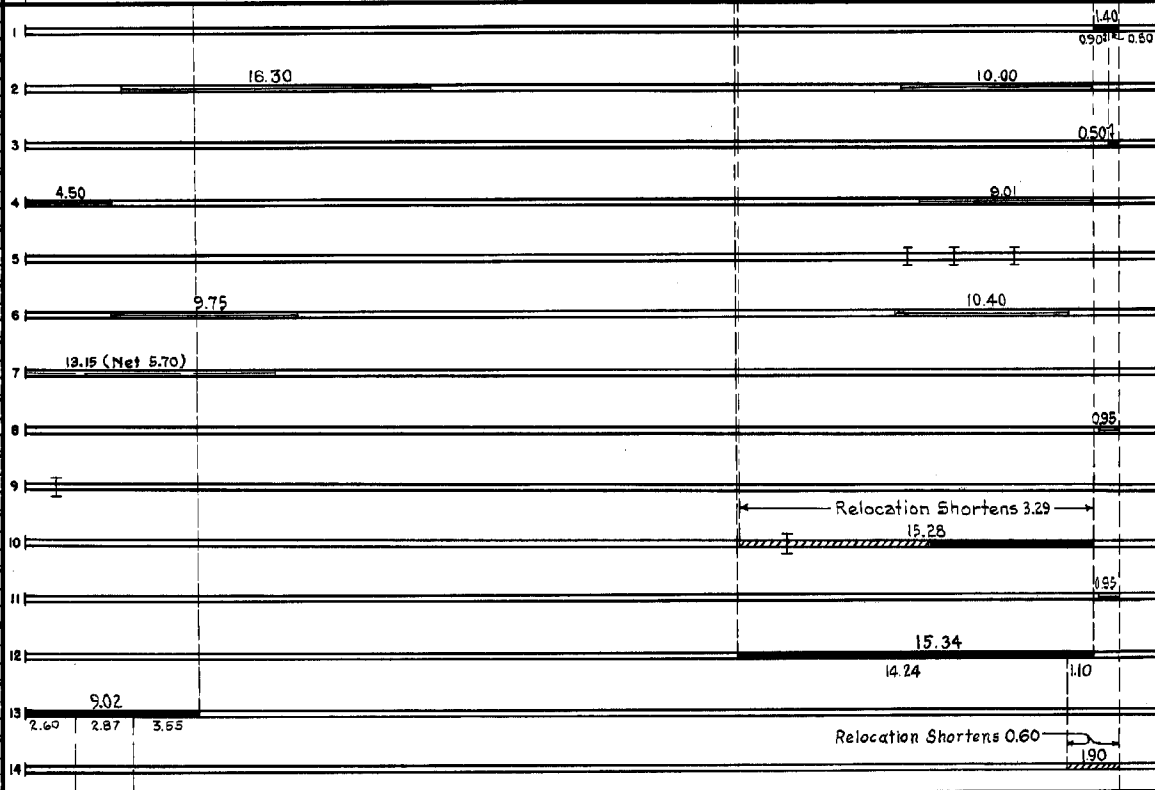
STATE OF MINNESOTA
DEPARTMENT OF HIGHWAYS
ROAD LIFE STUDIES
CONSTRUCTION PROJECT LOG RECORD

CONTROL SECTION 3609
TRUNK HIGHWAY 65
COUNTY Koochiching
DISTRICT 18

LIMITS: S. County Line - Jct.T.H.71



YEAR BUILT	PROJECT N ^o	DESCRIPTION			CODE N ^o
		TYPE	WIDTH	THICKNESS	
C	1946 A.F.E. 18	Gravel Lift (0.45 MI) Bit. Surfacing Mixed Bit.	24'	6"	MC3, 18847 Gal. Agg. 168 C.Y.
M	1947 A.F.E. 6	Grav. Resurfacing	Var	1"	4537 tons & 3070 C.Y.
C	1948 A.F.E. 26	Bit. Resurfacing Mixed Bit.	24'	1" added	MC2, 5037 Gal. Agg. 268 C.Y.
M	1949 A.F.E. 6	Grav. Resurfacing			6945 C.Y.
C	1951 A.F.E. 23	Fill Br. Approaches			
1951	3609-03	Br. 6768, 6767 & 6766	28'		203 S, 27 BS, #20 B.S.
1952	A.F.E. 28	Approach Const.			9349 C.Y. Pit-run Grav.
M	1952 A.F.E. 6	Grav. Resurfacing	24'		12886 Tons
M	1955 A.F.E. 822	Spot Reshaping			Base Mat'l 32697 tons
M	A.F.E. 617	Sag Repair			MC2, 369 Gal.
1956	A.F.E. 822	Bit. Surf. Repair	24'		Bit. Mix 1093 Tons
C	A.F.E. 822	Br. 2571	28'		14' Wood Span
1957	A.F.E. 820	Br. Approaches			Bridge built by Bridge Crew No.1
C	3609-07	Grading	31.40		
1958	3609-05	Gravel	33.37	2'-7"	
3609-06	Br. 9392	24'			400' H.Y. L.T. & B.S.
M	1958 A.F.E. 605	Light Bit. Seal			RS-2, 1957 Gal. Agg. 80 C.Y.
C	1959 3609-08	Sand-Gravel Sub-base Gravel Base Plant Mix Bit.	7" 33' 24'	3" 3" 1 1/2"	8184 Tons/Mi. 3337 Tons/Mi. 989 Tons AC-1
C	1962	Gravel	24'	2"	Gravel 10102 Tons
C	1963 3609-10	Grading Sub-base Gravel & Bit Base Plant mix Bit	3.21	2"	12 sand gravel sub-base



YEARS FROM	TOTAL TO	UNINCORPORATED		INCORPORATED		RURAL		URBAN		REMARKS: See Sheet N ^o 1
		RDWY. MI.	BR. MI.	RDWY. MI.	BR. MI.	RDWY. MI.	BR. MI.	RDWY. MI.	BR. MI.	

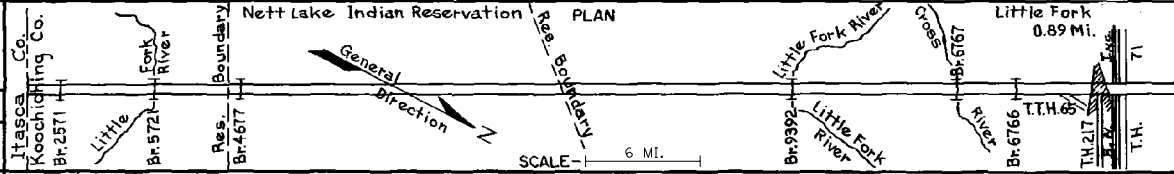
PREPARED BY
TRAFFIC AND PLANNING DIVISION
IN COOPERATION WITH
U.S. DEPARTMENT OF COMMERCE
BUREAU OF PUBLIC ROADS

STATE OF MINNESOTA
DEPARTMENT OF HIGHWAYS
ROAD LIFE STUDIES
CONSTRUCTION PROJECT LOG RECORD

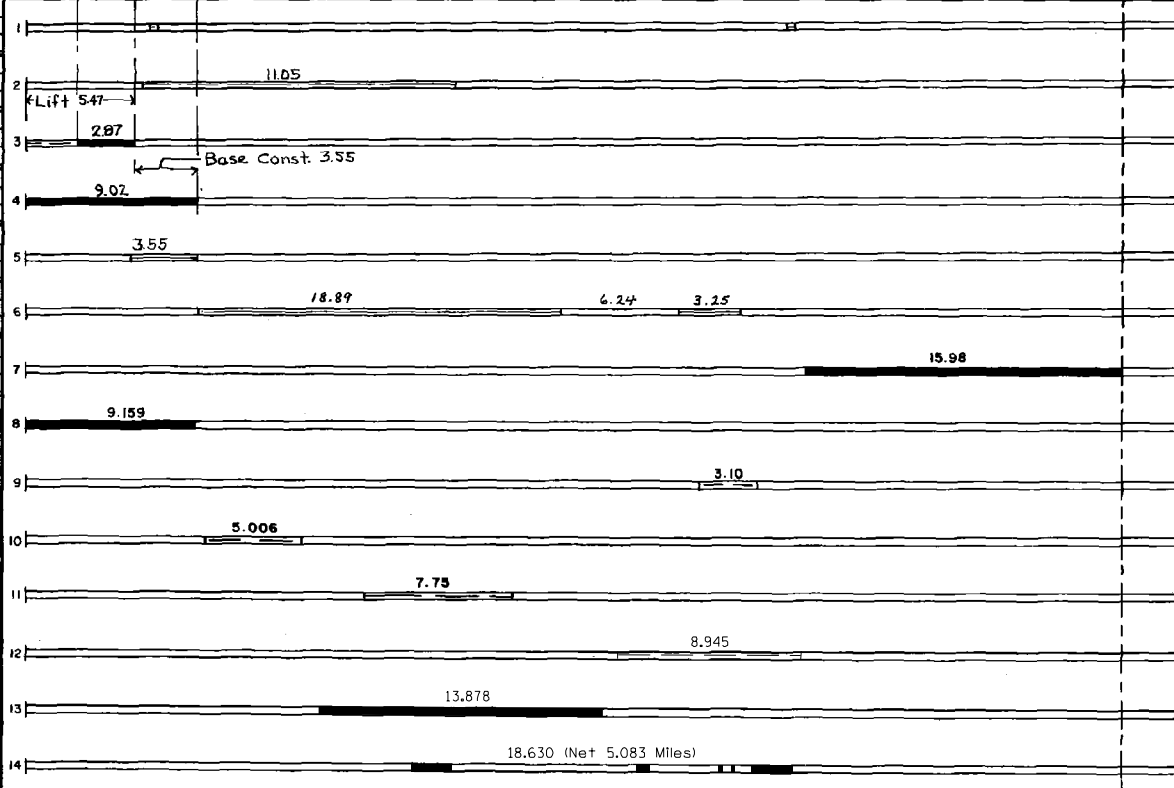
CONTROL SECTION **3609**
TRUNK HIGHWAY **65**
COUNTY **Koochiching**
DISTRICT **1B**

LIMITS: S. County Line - Jct. T.H. 71

Ref. Pt. 217+00.178 - 270+00.739



YEAR	PROJECT NO	DESCRIPTION			
		TYPE	WIDTH	THICKNESS	REMARKS
C 1964	Br. Crew	(Raise Portals) Br. 5721 Br. 9392			Increase Vertical Clearance to 16'
M 1967	SF	Gravel Resurfacing	Var.		
M 1968	SF	Grade Lift Road Mix Bit.	24' 24'	Var. 1"	Gravel 19,889 C.Y. MC-70 12,156 Gal. (Surr.) MC-250 145,103 Gal. Agg. 212.1 Ton
M 1969	SF	Base Construction Bit. Surfacing	24' 24'	10" 1"	23,827 Tons Gravel 56,100 Gals. Agg. 8,333 Tons
M 1970	SF	Bit. Surface Repair	24'	1"	MC-250 tack, 1500 Gal. Agg. 2632 Tons
C 1978	SF	Gravel Resurfacing	Var.		CL-141 2000 Cu.Ys.
M 1983	3609-18	Bit. Surfacing & Aggregate Shouldering			Contract No. 18819
M 1983	3609-19	Bit. Resurfacing	11'-12'	3"	Contract No. 18816
M 1983	SF	Bit. Surfacing	22'	2"	Spec 2331 - 5008 Tons
M 1983	SF	Spot Bit. Overlays Fog Seal	22'	2"	69,446 Tons MC 250 Cold Mix MC 250 - 3600 Gal.
M 1984	SF	Drainage Correction			Replace Culverts
M 1987	SF	Spot Overlay	24'	Var.	Spec. 2331
M 1988	M4318	Gravel Surfacing	22'	4"	
C 1998	8821-16	Bit. Overlay	24'	1 1/2"	Spec. 2350



YEARS		TOTAL MILES	UNINCORPORATED		INCORPORATED		RURAL		URBAN	
FROM	TO		RDWY. MI.	BR. MI.	RDWY. MI.	BR. MI.	RDWY. MI.	BR. MI.	RDWY. MI.	BR. MI.

REMARKS See sheet No. 1

