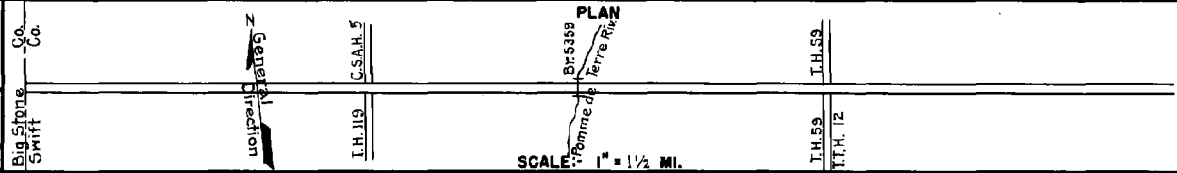


PREPARED BY
HIGHWAY PLANNING SURVEY
IN COOPERATION WITH
U.S. PUBLIC ROADS ADMINISTRATION

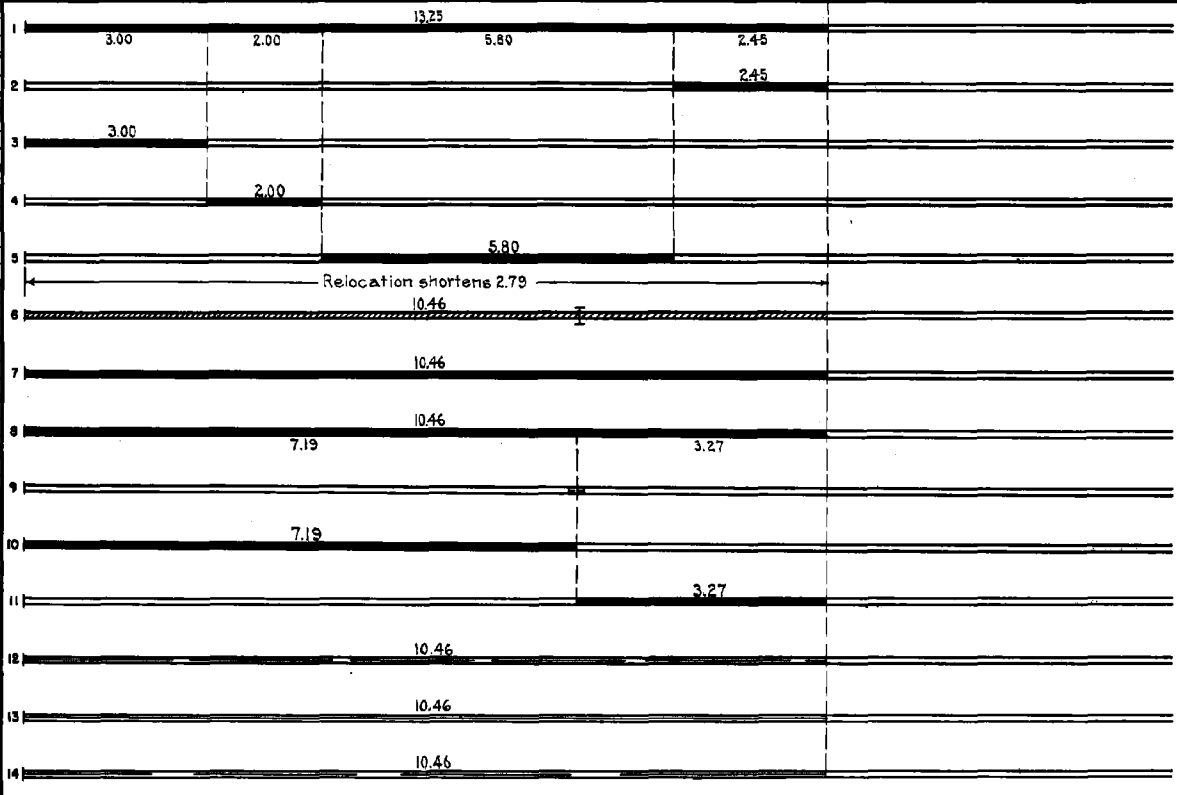
STATE OF MINNESOTA
DEPARTMENT OF HIGHWAYS
ROAD LIFE STUDIES
CONSTRUCTION PROJECT LOG RECORD

CONTROL SECTION 7603
TRUNK HIGHWAY 12
COUNTY Swift
DISTRICT 4B

LIMITS: W. Co. Line - Jct. T.H. 59



YEAR BUILT	PROJECT N ^o	DESCRIPTION			CODE N ^o
		TYPE	WIDTH	THICK-NESS	
		Grading	22'		
		Gravel	22'	1 1/2"	
1925		Gravel	22'	1 1/2"	
1925		Gravel	22'	1 1/2"	
1928		Gravel	22'	1 1/2"	
1929		Gravel	22'	1 1/2"	
1934	12-26-25-1	Grading Br. 5359	32'		
1935	12-26-25-1	Gravel	30'	1 3/4"	
1936	12-26-25-1A&B	Gravel	32'	2"	
1936	12-26-25-1A&B	Roadside Develop.			
1937	12-26-25-1A	CaCl ₂ Stab. Grav. Bit. Surf. Treat.	32'	2 1/2"	
1937	12-26-25-1B	Mixed Bitum.	26'	2"	
M	1942 A.F.E. 12	Spot Treat. Bit. Surf. Repair			
M	1942 A.F.E. 5				
1943	1943 A.F.E. 5	Bit. Seal Coat			
M	1944 A.F.E. 25	Subgr. Treat. (Spots)			
1944	A.F.E. 4	Spot Treat. Bit. Surf. Repair			



YEARS FROM	TO	TOTAL MILES	UNINCORPORATED		INCORPORATED		RURAL		URBAN	
			RDWY. MI.	BR. MI.	RDWY. MI.	BR. MI.	RDWY. MI.	BR. MI.	RDWY. MI.	BR. MI.
1925	1933	13.25	11.25	0.00	2.00	0.00	13.25	0.00	0.00	0.00
1934		10.46	10.44	0.02	0.00	0.00	10.44	0.02	0.00	0.00

REMARKS: Layout is to scale as of 1934

PREPARED BY
HIGHWAY PLANNING SURVEY
IN COOPERATION WITH
U.S. PUBLIC ROADS ADMINISTRATION

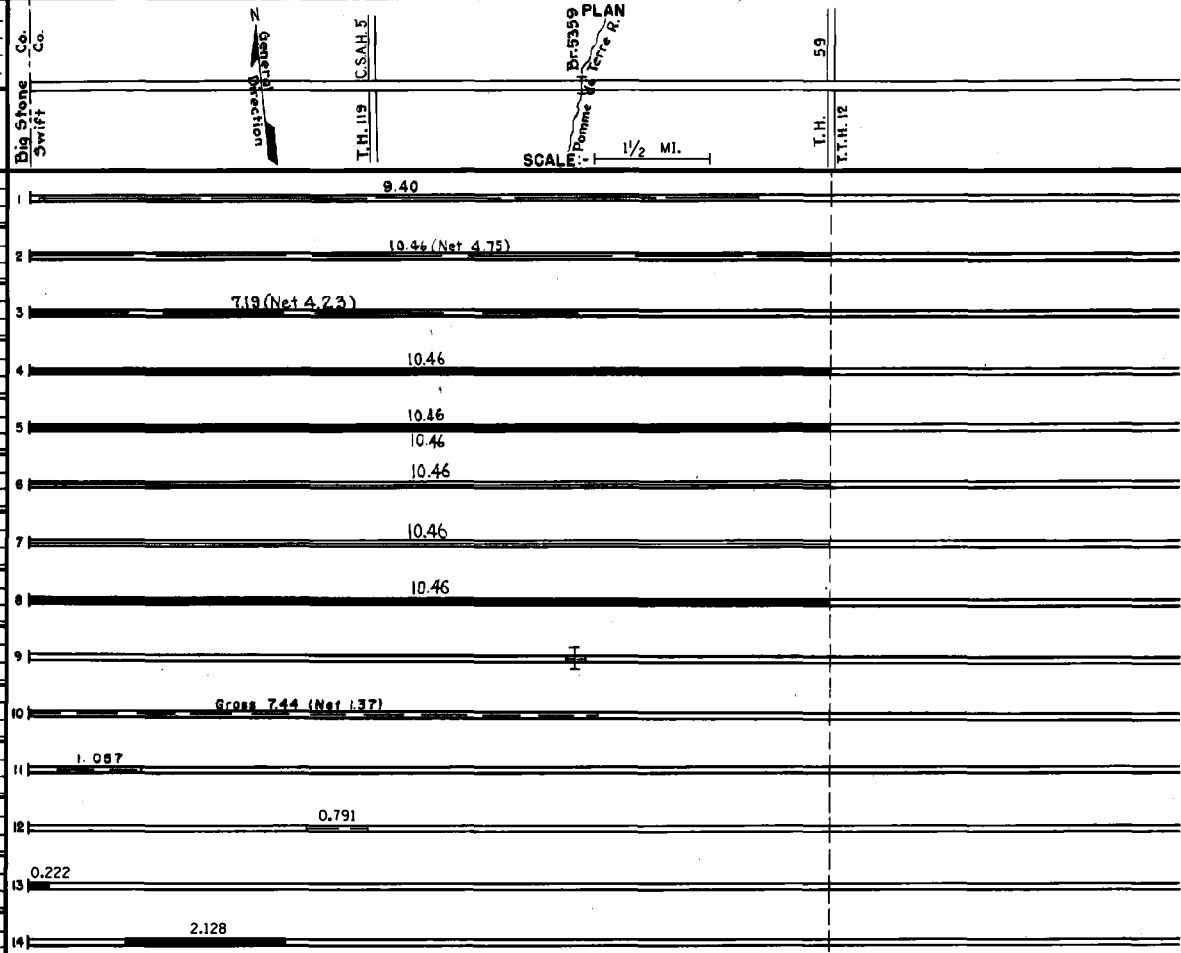
STATE OF MINNESOTA
DEPARTMENT OF HIGHWAYS
ROAD LIFE STUDIES
CONSTRUCTION PROJECT LOG RECORD

CONTROL SECTION 7603
TRUNK HIGHWAY 12
COUNTY Swift
DISTRICT 4B

LIMITS: W. Co. Line - Jct. T.H. 59

Ref. Pt. 016+00.630 - 027+00.088

YEAR BUILT	PROJECT N°	DESCRIPTION			CODE N°
		TYPE	WIDTH	THICKNESS	
M 1945	A.F.E. 4	Spot Treat.			
	A.F.E. 29	Bit. Surf. Repair	26'		
		Subgr. Treat. (Spots)			
M 1946	A.F.E. 4	Spot Treat.			
		Bit. Surf. Repair	24'		
M 1947	A.F.E. 4	Spot Treat.			
		Bit. Surf. Repair	24'		
C 1948	7603-02	Gravel Base	28'	5" 9"	
	7603-03	Bit. Stab. Base (Mixed Bit)	26'	1"	
C 1951	7603-04	Plant Mix Bit.	24'	1 1/2"	
M 1956	A.F.E. 605	Light Bit. Seal	24'		
M 1967		Light Bit. Seal	23'		
C 1972	7603-09	Plant Mix Bit Agg. Shoulders	24'	1 1/2" Var Var	
C 1979	7603-11 R08.0005(45)	Traffic Barrier Inalt.			
M 1982	SF	Correction of Problem Snow Slopes			
M 1984	SF	Spot Bit. Overlay	24'	1 1/2"	
M 1987	SF	Spot Overlay	24'	1 1/2"	
M 1987	SF	Bit. Overlay	24'	1 1/2"	
M 1988	SF	Bit. Overlay	24'	1 1/2"	



YEARS FROM	TOTAL MILES TO	UNINCORPORATED		INCORPORATED		RURAL		URBAN	
		RDWY. MI.	BR. MI.	RDWY. MI.	BR. MI.	RDWY. MI.	BR. MI.	RDWY. MI.	BR. MI.

REMARKS: See Sheet No. 1.

