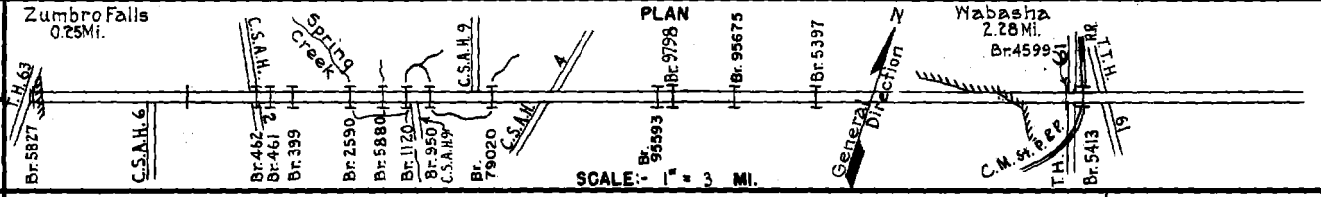


PREPARED BY  
HIGHWAY PLANNING SURVEY  
IN COOPERATION WITH  
U.S. PUBLIC ROADS ADMINISTRATION

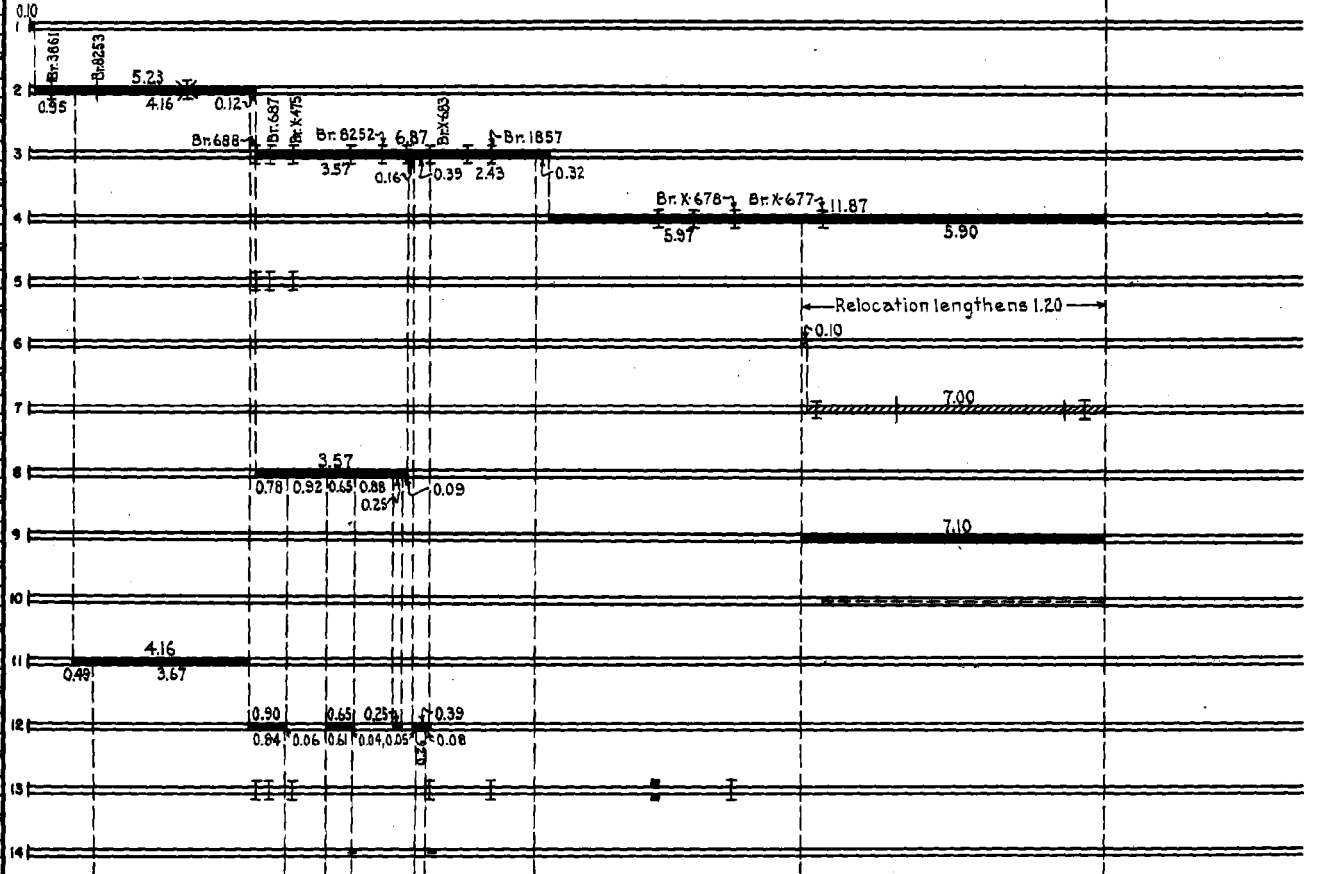
STATE OF MINNESOTA  
DEPARTMENT OF HIGHWAYS  
ROAD LIFE STUDIES  
CONSTRUCTION PROJECT LOG RECORD

CONTROL SECTION 7903  
TRUNK HIGHWAY 60  
COUNTY Wabasha  
DISTRICT 6A

LIMITS: Jct. T.H. 63 in Zumbro Falls - Jct. T.H. 61 in Wabasha



YEAR BUILT	PROJECT NO.	DESCRIPTION			CODE NO.
		TYPE	WIDTH	THICKNESS	
		Oil Tr. Gravel	24		No Record of Constr. Added in 1934.
		Earth	16.8		No Record of Constr. Added in 1934.
		Br. 386, 8253 & 702	18.24		35 B.S. 4 C.A. & 16 B.S.
		Earth	18.20		No Record of Constr. Added in 1934. (1)
		9 Bridges	14.20		
		Gravel	16.20		No Record of Constr. Added in 1934.
		Br. 8251, 6182, X678, X677	16.18		16 B.S. 24 B.S. 40 L.T. & 70 L.T.
1934		Br. 462	24		12 B.S. Replace Br. X688
		Br. 461	24		14 B.S. Replace Br. X687
		Br. 399	20		10 B.S. Replace Br. X475
1938	60-73-21-1	Grading	32		
1935	60-73-21-A to G	Grading, Br. 399	32		W128
		Br. 5397	28		65 D.P.G.
		4599 & 5413			24 M.P. Arch & 0 R.G.U.P.
1935		Crushed Rock & Reshaping	20	2"	Maint. Dept.
1935	60-73-21-A to G	Stab. Gravel	24	3"	
1936	60-73-21-B-G	Check Dams			
1937	A.F.E. 26	Grading	30		
1938	1938 A.F.E. 4	Crushed Rock	24	2 1/2"	Maint. Dept.
		Grading	32		
1938	A.F.E. 22	Gravel	24	2 1/4"	Maint. Dept.
		Br. 462, 461, 399	24-27		10 B.S. 40 B.S. 16 B.S.
		950, 6323 & 380 (2)	23-24		60 B.S. 46 B.S. & 35 B.S.
		Widen Br. 8251	24		16 B.S. Maint. Dept.
1938	A.F.E. 26	Channel Change			Maint. Dept.



YEARS FROM	YEARS TO	TOTAL MILES	UNINCORPORATED		INCORPORATED		RURAL		URBAN	
			RDWY. MI.	BR. MI.	RDWY. MI.	BR. MI.	RDWY. MI.	BR. MI.	RDWY. MI.	BR. MI.
1934	1934	24.07	21.53	0.11	2.43	0.00	21.86	0.11	2.10	0.00
1935	1938	25.27	22.31	0.11	2.85	0.00	22.64	0.11	2.52	0.00
1939	1941	25.00	22.07	0.10	2.83	0.00	22.38	0.10	2.52	0.00
1942	1960	24.81	22.18	0.10	2.53	0.00	22.43	0.10	2.28	0.00
1961		24.71	22.07	0.11	2.53	0.00	22.32	0.11	2.28	0.00

REMARKS: Layout is to scale as of 1935  
 (1) Br. 688, 10 B.S., Br. 687, 14 B.S., Br. 475, 10 W.S., Br. 2590, 50 L.T., Br. 8252, 14 B.S., Br. 1120, 167 H.T. & B.S., Br. 683, 30 B.S., Br. 798, 16 B.S., & Br. 1857, 30 B.S.  
 (2) Br. 462, 461, & 399 reconstructed, Br. 950 replaced Br. X683, Br. 6323 replaces Br. 1857, & Br. 380 replaces Br. 678.



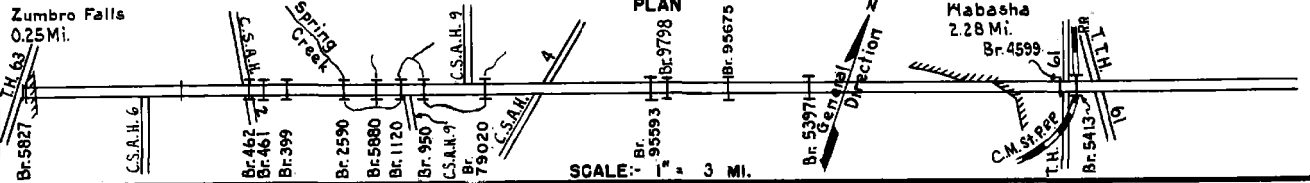
PREPARED BY  
HIGHWAY PLANNING SURVEY  
IN COOPERATION WITH  
U. S. PUBLIC ROADS ADMINISTRATION

STATE OF MINNESOTA  
DEPARTMENT OF HIGHWAYS  
ROAD LIFE STUDIES  
CONSTRUCTION PROJECT LOG RECORD

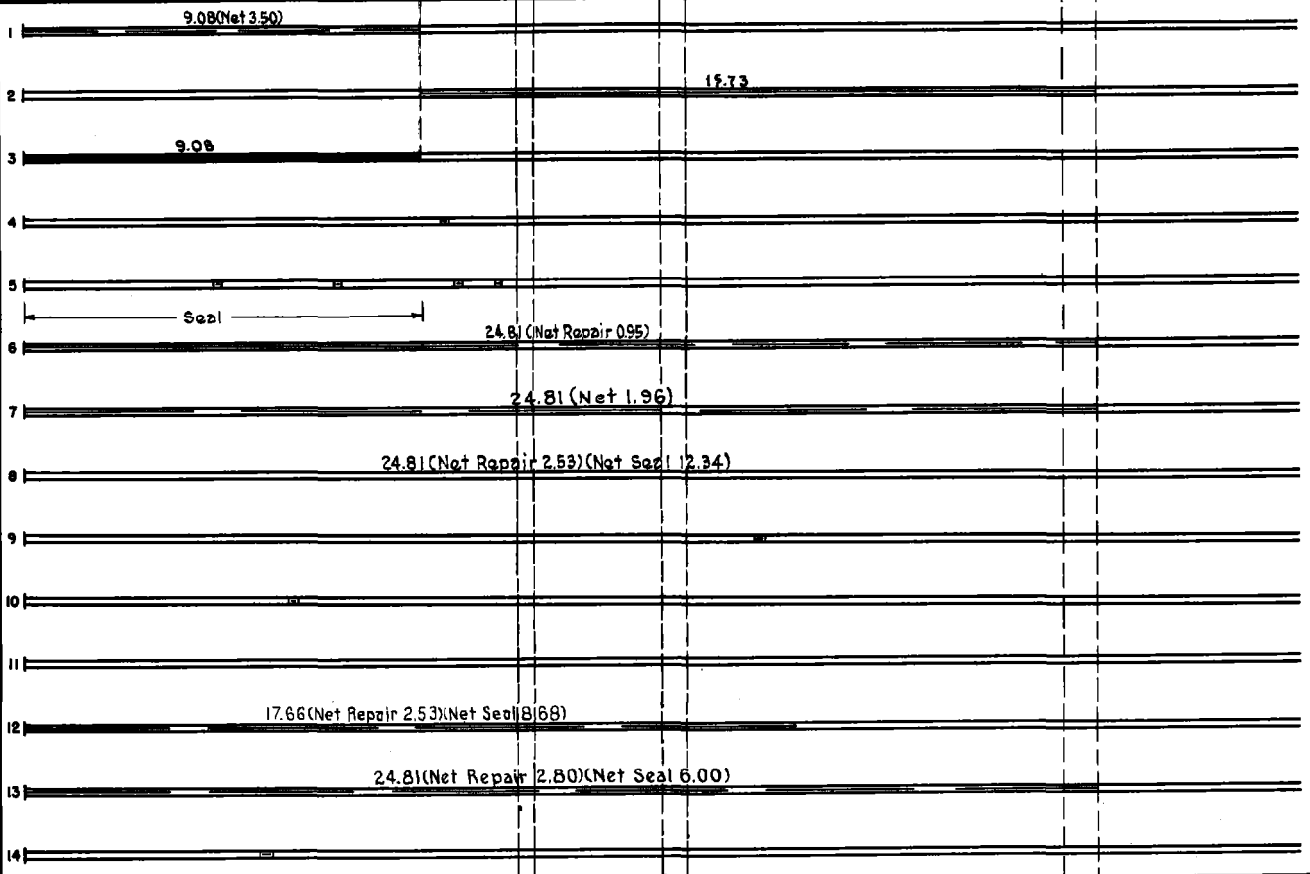
CONTROL SECTION 7903  
TRUNK HIGHWAY 60  
COUNTY Mabasha  
DISTRICT 6A

LIMITS: Jct. T.H. 63 in Zumbro Falls - Jct. T.H. 61 in Mabasha

Zumbro Falls  
0.25 Mi.



YEAR BUILT	PROJECT N <sup>o</sup>	DESCRIPTION			CODE N <sup>o</sup>
		TYPE	WIDTH	THICK- NESS	
M	1949 A.F.E. 4	Spot Treat. Bit. Surf. Repair	24'		
M	1950 A.F.E. 4	Light Bit. Seal	24'		
C	1970 A.F.E. 21	Bit. Resurfacing Mixed Bit.	24'	1" added	
C	1950 A.F.E. 29	Erosion Control			
C	1951 A.F.E. 34, 39, 52 159	Erosion Control			
M	1951 A.F.E. 4	Spot Treat. Bit. Surf. Repair Light Bit. Seal (9.08 Mi)	24'		
M	1952 A.F.E. 4 A.F.E. 66	Spot Treat. Bit. Surf. Repair Erosion Control	24'		
M	1953 A.F.E. 604 A.F.E. 605	Spot Treat. Bit. Surf. Repair Spot Light Bit. Seal	24'	326	
C	1953 A.F.E. 866	Erosion Control			
C	1953 A.F.E. 835 1954	Erosion Control			Check Dams & Grading
C	1954 A.F.E. 866	Erosion Control			
M	1954 A.F.E. 604 A.F.E. 605	Spot Treat. Bit. Surf. Repair Spot Light Bit. Seal	24'		
M	1955 A.F.E. 604 A.F.E. 605	Spot Treat. Bit. Surf. Repair Spot Light Bit. Seal	24'		
C	1955 A.F.E. 866	Erosion Control			Rip Rap



YEARS		TOTAL MILES	UNINCORPORATED		INCORPORATED		RURAL		URBAN	
FROM	TO		RDWY. MI.	BR. MI.	RDWY. MI.	BR. MI.	RDWY. MI.	BR. MI.	RDWY. MI.	BR. MI.

REMARKS: See Sheet No. 1



PREPARED BY  
TRAFFIC AND PLANNING DIVISION  
IN COOPERATION WITH  
U.S. DEPARTMENT OF COMMERCE  
BUREAU OF PUBLIC ROADS

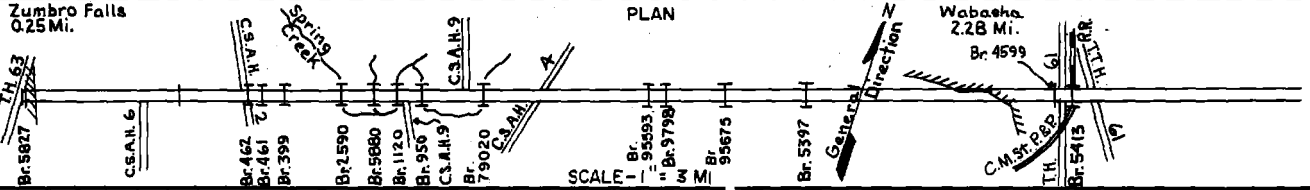
STATE OF MINNESOTA  
DEPARTMENT OF HIGHWAYS  
ROAD LIFE STUDIES  
CONSTRUCTION PROJECT LOG RECORD

CONTROL SECTION 7903  
TRUNK HIGHWAY 60  
COUNTY Wabasha  
DISTRICT 6A

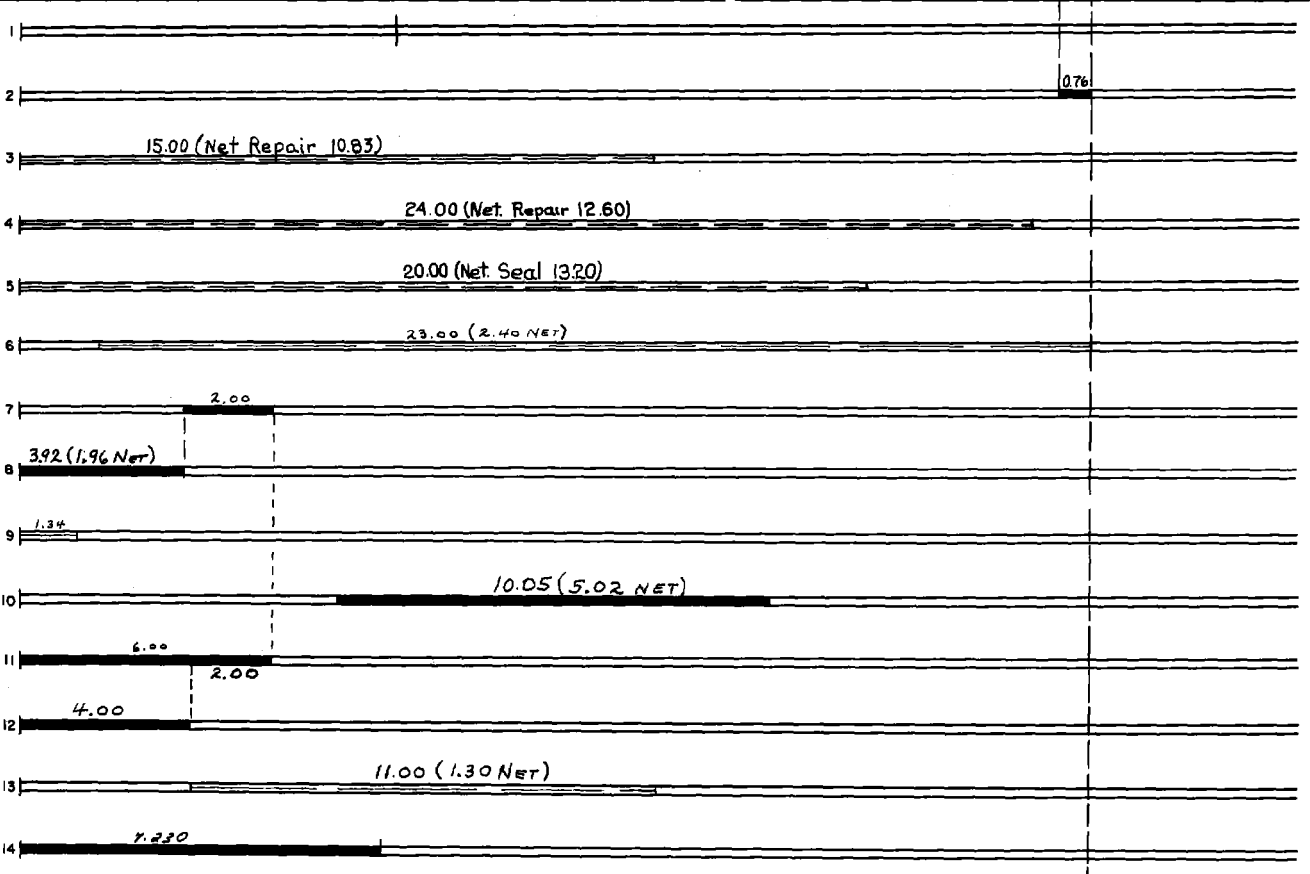
LIMITS: Jct. T.H. 63 in Zumbro Falls - Jct. T.H. 61 in Wabasha

Zumbro Falls  
0.25 Mi.

PLAN



YEAR BUILT	PROJECT NO.	DESCRIPTION			
		TYPE	WIDTH	THICKNESS	REMARKS
1967	Maint.	Br. 79015 (1)	30'		Steel Beam Span 114' REPL # 1120
1970	7903-18	Grade Base, Pl. Mix Bit Surf. Gravel Shldrs.	24' 40'	6 1/2" 1 1/2"	
1970	SF	Spot Bit. Repair	24'	1/2"	RC-250 60,678 Gal. Agg. 2,670 C.Y.
1972	SF	Spot Bit. Repair	24'	1/2" 1"	
1972	SF	Seal Coat	24'		RC-800 49,000 Gal. Agg. 1,330 C.Y.
1972	SF	Spot Bit. Repair			RC-800 14,800 GAL Agg. 297 Ton
1975	SF	Bit. Overlay	24'	1"	AC 2341 1355 Ton
1976	SF	Random Bit. Overlay	22'	1"	AC 2331 2848.1 Ton
1976	SF	Seal Coat	24'		CRS-1 3862 GAL SAND 80 Cu. Yd.
1978	SF	Bit. Spot Overlay	20'		Pl. Mix AC 2341 1500 Ton
1978	SF	Bit. Overlay	24'	1 3/4"	Pl. Mix AC 2341 2269 Ton
1979	SF	Bit. Overlay	24'	1 1/2"	Pl. Mix 4782 Ton
1979	SF	Random Bit. Overlay	24'	1 1/4"	
1980	7903-30	Bituminous Resurfacing	22'	1 1/2"	



YEARS		TOTAL MILES	UNINCORPORATED		INCORPORATED		RURAL		URBAN	
FROM	TO		RDWY. MI.	BR. MI.	RDWY. MI.	BR. MI.	RDWY. MI.	BR. MI.	RDWY. MI.	BR. MI.

REMARKS: See Sheet No. 1  
(1) Replace Br. 1120

