

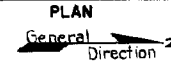
PREPARED BY
HIGHWAY PLANNING SURVEY
IN COOPERATION WITH
U. S. PUBLIC ROADS ADMINISTRATION

STATE OF MINNESOTA
DEPARTMENT OF HIGHWAYS
ROAD LIFE STUDIES
CONSTRUCTION PROJECT LOG RECORD

CONTROL SECTION 8305
TRUNK HIGHWAY 15
COUNTY Watonwan
DISTRICT 7B

LIMITS: N. Jct. T.H. 60 in Madelia - N. Co. Line

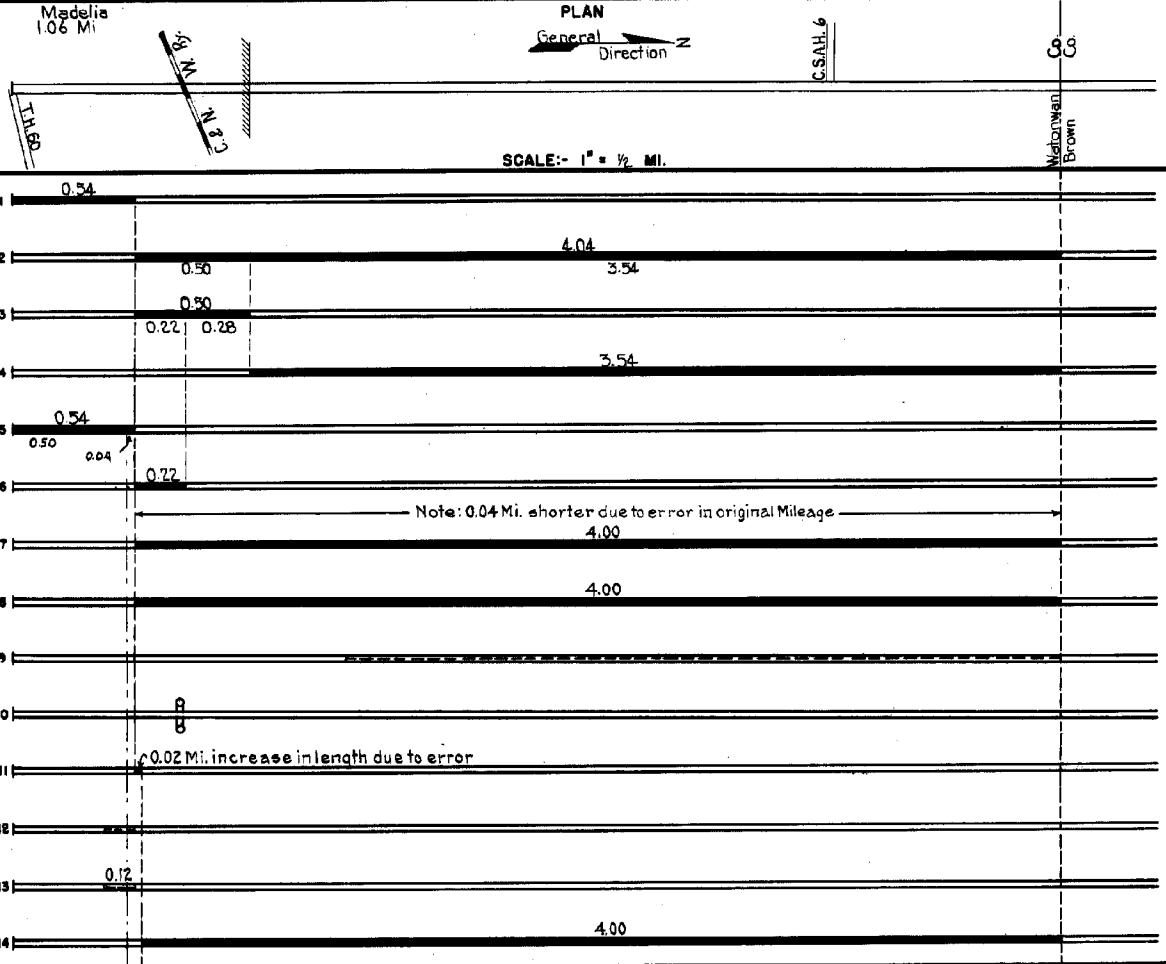
Madelia
1.06 Mi



C.S.A.H. 6

83

YEAR BUILT	PROJECT N°	DESCRIPTION		REMARKS	CODE N°
		TYPE	WIDTH THICKNESS		
		Gravel		No Record of Constr.	
		Earth	24"	No Record of Constr.	
1926		Gravel	30' 3"	1500 C.Y./Mile. Maint. Dept.	
1926		Gravel	24' 3/4"	1500 C.Y./Mile. Maint. Dept.	
1931	15-15-34-1	Concrete	20"		
1934		Oil Tr. Gravel	30"	Maint. Dept.	
1938	(2) 8305-01&02	Grading Slab Sand Base	34" 4"		
1939	8305-05 (2) 8305-07 8305-06 (2)	Slab Sand Base Slab Sand Base Repair Bit Surf. Treat.	34" 6" 32' 3/4"		
C	1940 A.F.E. 33	Seeding		Maint. Dept.	
C	1940 8305-06	Crossing Signals			
1922	60-16-4	Concrete		Buck St. intersection previously excluded from mileage by error.	
C	1941 8305-09	Curb Gutter & Sidewalk		By Village & W.P.A. under Spec. Agree. C-216.	
C	1941 8305-10	Widening Plant Mix Bit Slab Grav. Base	* * * *	#2 Bit Surf. on 6" Slab Grav. Base 8 1/2' wide on each side of 20' slab.	
C	1941 8305-11	Plant Mix Bit.	24' 1 1/2"	On old 1/2" Mat. Width varies from 26' to 40' in Madelia.	



YEARS FROM	TO	TOTAL MILES	UNINCORPORATED		INCORPORATED		RURAL		URBAN	
			RDWY. MI.	BR. MI.	RDWY. MI.	BR. MI.	RDWY. MI.	BR. MI.	RDWY. MI.	BR. MI.
1921	1937	4.58	3.54	0.00	1.04	0.00	3.54	0.00	1.04	0.00
1938	1940	4.54	3.50	0.00	1.04	0.00	3.50	0.00	1.04	0.00
1941		4.56	3.50	0.00	1.06	0.00	3.50	0.00	1.06	0.00

REMARKS: Layout is to scale as of 1921.
(1) Accumulated thickness. (2) Width is 40' curb to curb for 0.22 Mi. in Madelia.

7.144

PREPARED BY
HIGHWAY PLANNING SURVEY
IN COOPERATION WITH
U.S. PUBLIC ROADS ADMINISTRATION

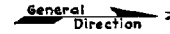
STATE OF MINNESOTA
DEPARTMENT OF HIGHWAYS
ROAD LIFE STUDIES
CONSTRUCTION PROJECT LOG RECORD

CONTROL SECTION 8305
TRUNK HIGHWAY 15
COUNTY Watonwan
DISTRICT 75

LIMITS: N. Jct. T.H. 60 in Madelia - N. Co. Line

Madelia
1.06 Mi.

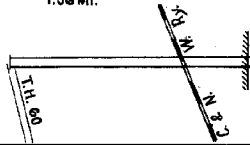
PLAN



C.S.A.H. 6

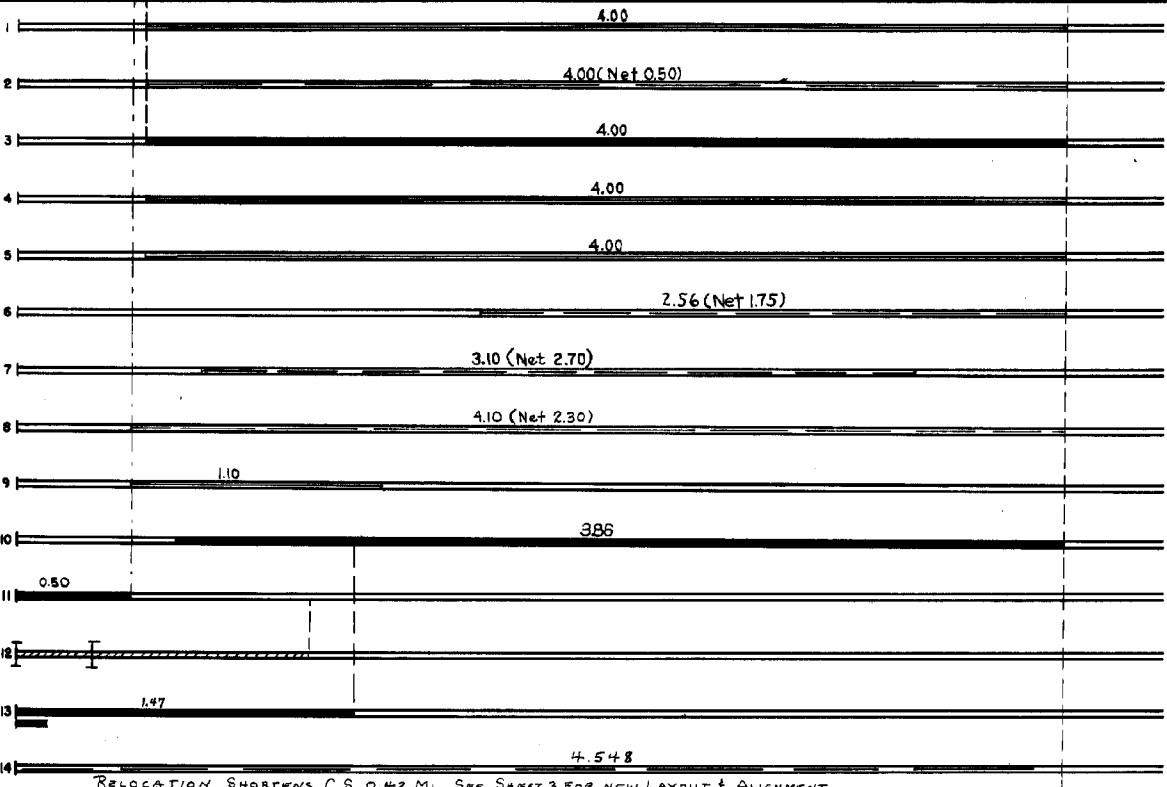
Co.
Co.

Watonwan
Brown



SCALE: 1" = 1/2 MI.

YEAR BUILT	PROJECT N ^o	DESCRIPTION			CODE N ^o
		TYPE	WIDTH	THICKNESS	
M 1945	A.F.E. 5	Bit. Seal Coat			
M 1949	A.F.E. 4	Spot Treat. Bit. Surf. Repair	24'		
C 1950	8305-12	Gravel Base Plant Mix Bit.	32' 24'	4" 1 1/2"	
M 1954	A.F.E. 605	Light Bit. Seal			
C 1958	A.F.E. 605	Light Bit. Seal	25'		
M 1963	SF	Spot Treat Bit. Surf. Repair	24'		
M 1964	SF	Spot Treat Bit. Surf. Repair	24'		
M 1966	SF	Bit. Surf. Repair	24'	1 1/2"	
M 1967	C	Light Bit. Seal Coat	24'		
C 1972	8305-18	Plant Mix Bit Agg. Shoulders	24' 10'	5/8" 3"	
C 1972	8305-20	Plant Mix Bit Gurb & Gutter	40'	3"	
C 1976	8305-19 RF 8305-19(36)	GRADE, BASE Pl. Mix Bit. Surf.			
C 1977	8305-22	GRADE, BASE Pl. Mix Bit. Surf. Grav. Shoulders	24'	3"	
M 1978	SF	SEAL COAT			



YEARS FROM	TOTAL TO	UNINCORPORATED		INCORPORATED		RURAL		URBAN	
		RDWY. MI.	BR. MI.	RDWY. MI.	BR. MI.	RDWY. MI.	BR. MI.	RDWY. MI.	BR. MI.

REMARKS: See Sheet No. 1.

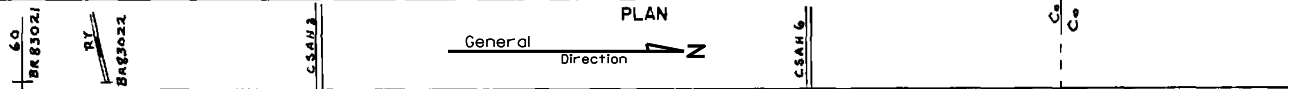
PREPARED BY
BUREAU OF POLICY & PLANNING
IN COOPERATION WITH
U.S. DEPARTMENT OF TRANSPORTATION-FEDERAL HIGHWAY ADMINISTRATION

STATE OF MINNESOTA
DEPARTMENT OF TRANSPORTATION
CONSTRUCTION PROJECT LOG RECORD

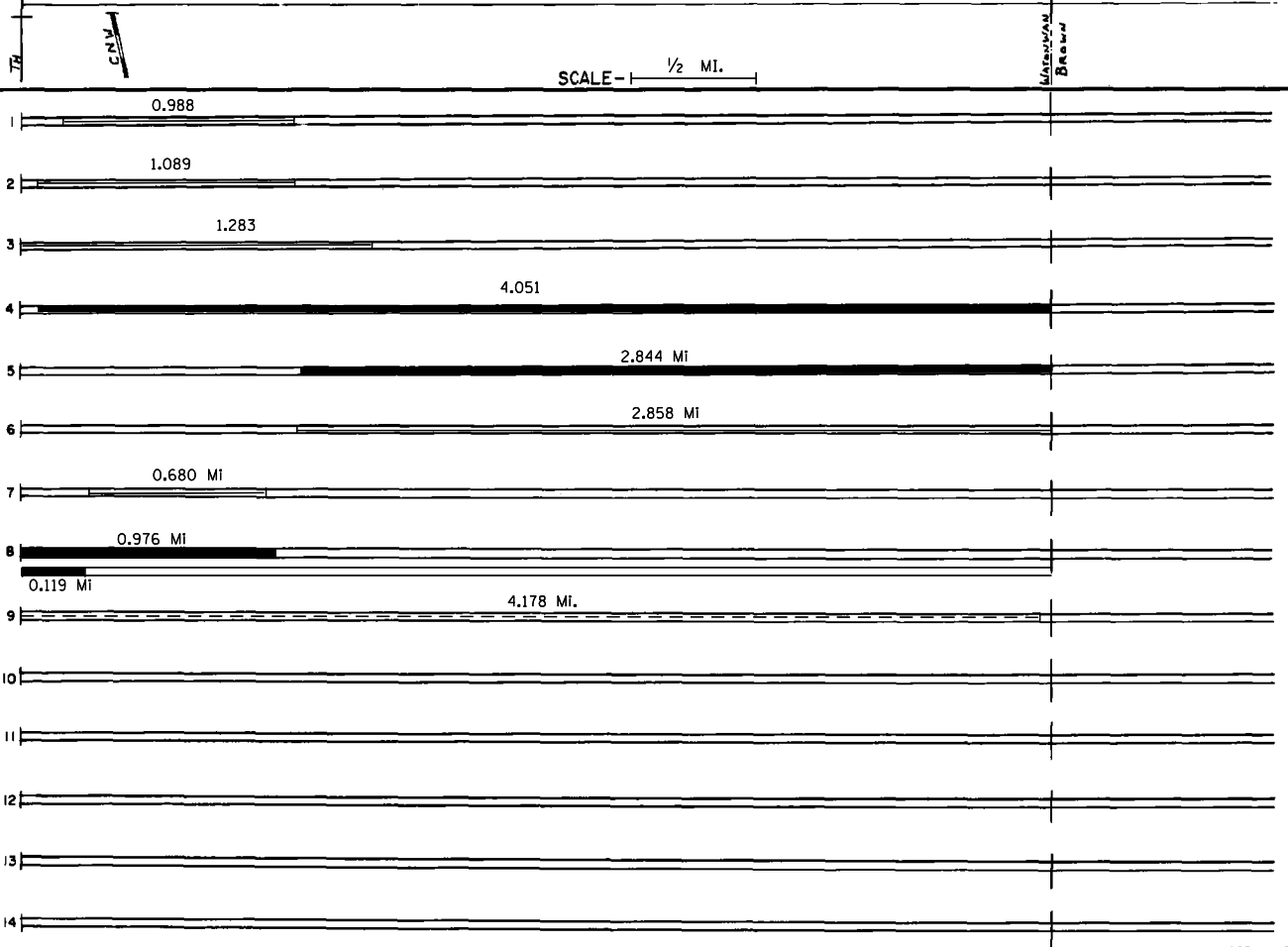
CONTROL SECTION 8305
TRUNK HIGHWAY 15
COUNTY WATONWAN
DISTRICT 7B

LIMITS: Jct. TH 60, BR 83021 — N. Co. Line

Ref. Pt. 038+00.584 - 042+00.500



YEAR BUILT	PROJECT NO	DESCRIPTION				REMARKS
		TYPE	WIDTH	THICKNESS		
M 1987	SF	Wedge Paving				
M 1987	SF	Spot Overlay		1 1/2"	Spec. 2331	
M 1988	SF	Bit. Sealing				
C 1991	8305-28	Bit. Overlay	28'	1 1/2"	Spec. 2331 Spec. 2341	
M 1999	8305-29	Bit. Overlay	28'	2"	Spec. 2350	
M 2000	8827-11	Major Crack Repair				
M 2003	8304-29	Bit Joint Repair				
M 2004	8305-30	Milling & Bituminous Overlay	NB & SB 24'	3/2" 4 1/2"	Spec 2360	
2013	8827-201	Aggregate seal Fog seal	24'		Type F2	



YEARS		TOTAL MILES	UNINCORPORATED		INCORPORATED		RURAL		URBAN		REMARKS
FROM	TO		RDWY. MI.	BR. MI.	RDWY. MI.	BR. MI.	RDWY. MI.	BR. MI.	RDWY. MI.	BR. MI.	
1978			4.14				4.14				